

HSF 禁止使用1级环境管理物质

To ensure the best usage, please operate it based on the working height.
Based on the engineering drawings, shall not exceed the maximum allowed compression.

Approve Sign

Note:

Materials:

.Plunger: Brass 3u" Au over 50u" Ni

.Barrel: Brass 1u" Au over 50u" Ni

.Spring: SUS

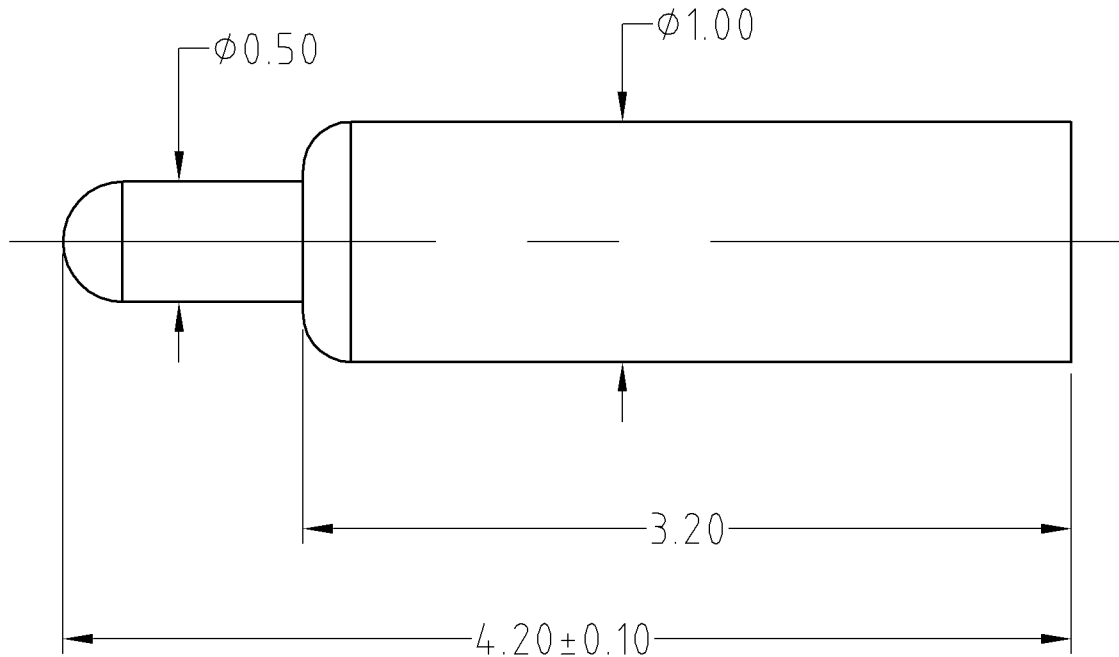
Mechanical:

.Contact force: 40g±10g at 0.8mm working stroke

.Life test: 20,000 cycles

Electrical:

.Rated current & voltage: DC 12V; 1A



SCALE	10:1	UNIT:mm	THIS DOCUMENT IS THE SOLE PROPERTY OF CFE CORPORATION CO.,LTD., AND SHOULD NOT BE USED IN WHOLE OR IN PART WITHOUT PRIOR WRITTEN PERMISSION.	SHEET: 1 of 1
ANGEL	$\pm 1^\circ$	A4		
0.000	± 0.02			
0.00	± 0.05	DRAW		
0.0	± 0.10	CHECK		
GENERAL TOLERANCE UNLESS OTHERWISE NOTED			APPRO	

		东莞市川富电子有限公司 CFE CORPORATION CO.,LTD.	
PART NO.	BF01011	FILE NAME	BF01011
TITLE.	Pago pin connector		

ECN(DCN) NO.	REV	DATE	DESCRIPTION	CHANGE	APPRO
	D0	2013.03.06	NEW		