

1

2

3

4

HSF 禁止使用1级环境管理物质

To ensure the best usage, please operate it based on the working height.  
Based on the engineering drawings, shall not exceed the maximum allowed compression.

Approve Sign

Note:

Materials:

.Plunger: Brass 1u" Au over 50u" Ni

.Barrel: Brass 1u" Au over 50u" Ni

.Spring: SUS

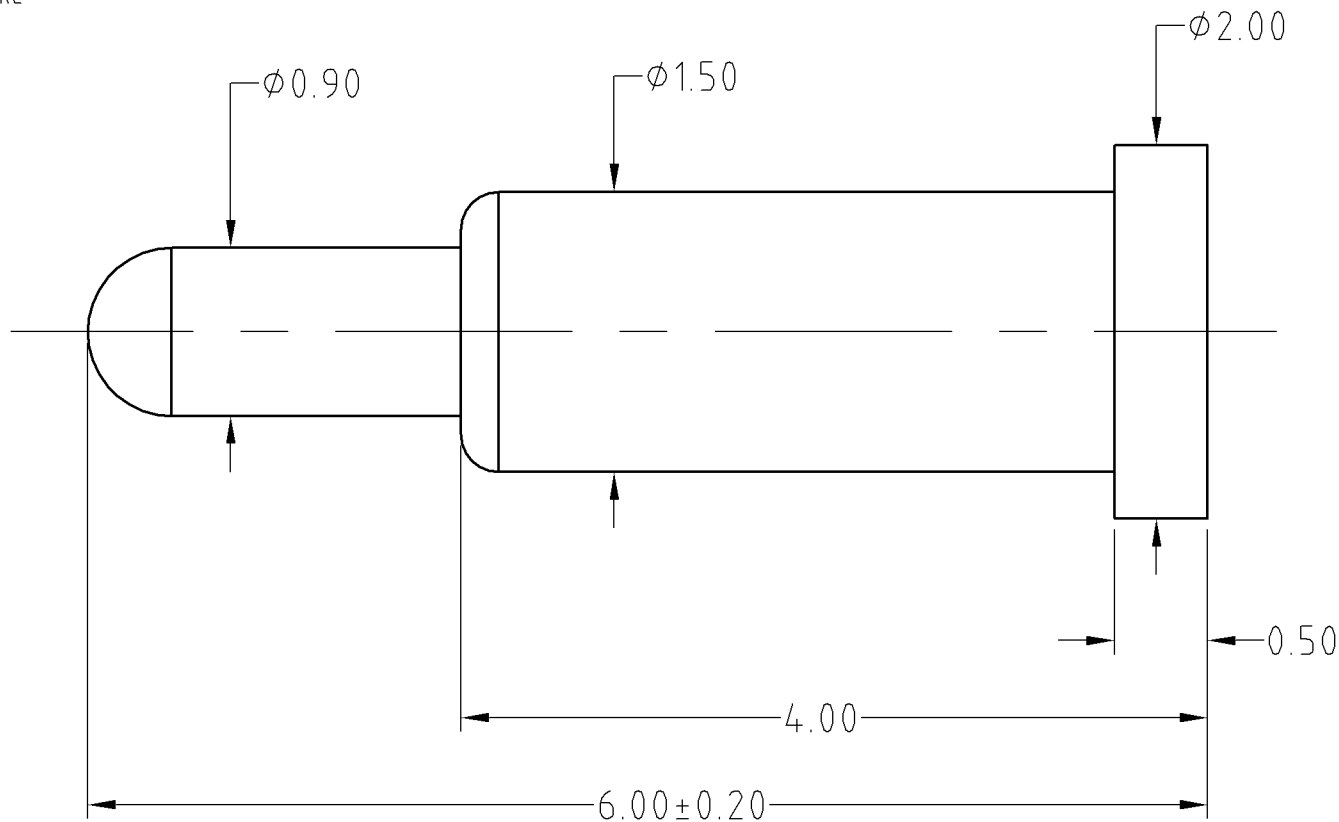
Mechanical:

.Contact force: 80g±20% at working stroke

.Life test: 10,000 cycles

Electrical:

.Rated current & voltage: DC 12V; 1A



SCALE	10:1	UNIT:mm	THIS DOCUMENT IS THE SOLE PROPERTY OF CFE CORPORATION CO.,LTD., AND SHOULD NOT BE USED IN WHOLE OR IN PART WITHOUT PRIOR WRITTEN PERMISSION.	
ANGEL	$\pm 1^\circ$	A4	SHEET: 1 of 1	
0.000	$\pm 0.02$			
0.00	$\pm 0.05$	DRAW	PART NO.	BF02011
0.0	$\pm 0.10$	CHECK	FILE NAME	BF02011
GENERAL TOLERANCE UNLESS OTHERWISE NOTED	APPRO	TITLE.	Pago pin connector	

**CFE** 东莞市川富电子有限公司  
CFE CORPORATION CO.,LTD.

_____	D0	2012.03.06	NEW		
ECN(DCN) NO.	REV	DATE	DESCRIPTION	CHANGE	APPRO