

1

2

3

4

Note:

Materials:

.Plunger: Brass 10u" Au over Ni

.Barrel: Brass 5u" Au over Ni

.Spring: SUS surface treatment

Mechanical:

.Contact force: 30g±10g at 1.0mm working stroke

.Full stroke: 1.4mm

.Life test: 20,000 cycles

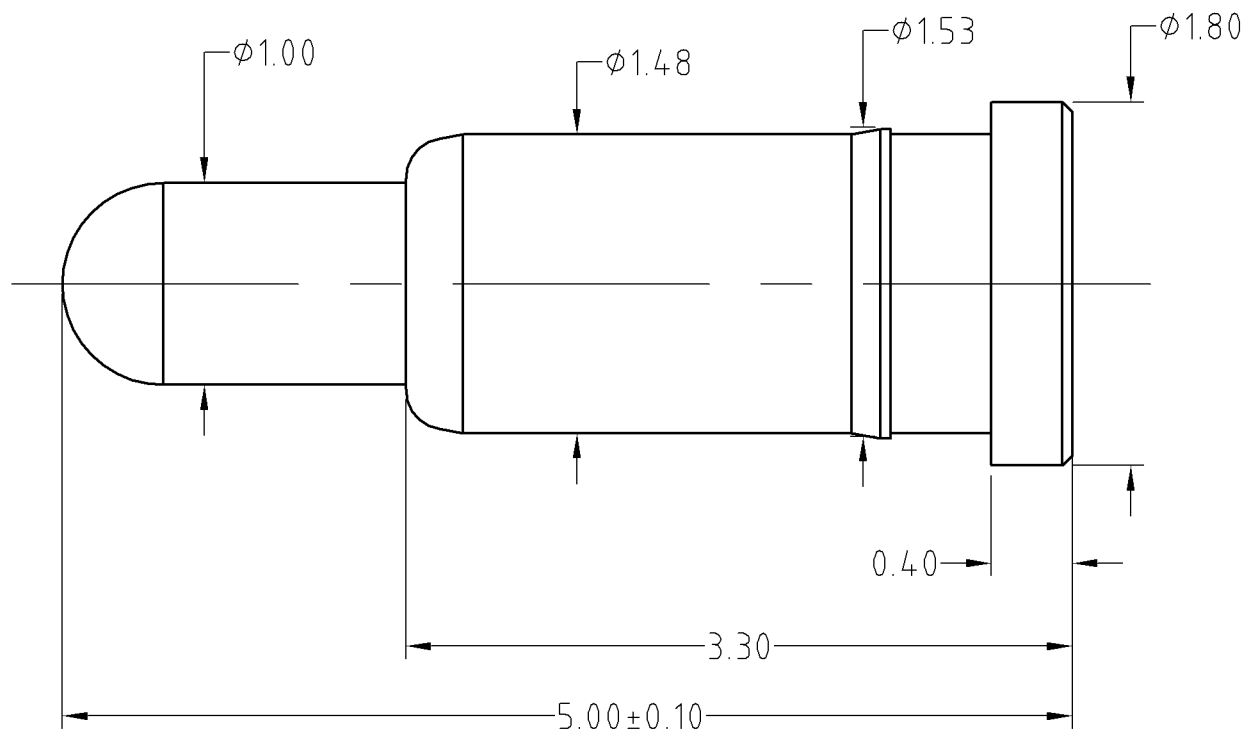
Electrical:

.Rated current &amp; voltage: DC 12V; 1A Max.

.Contact resistance: 100 milliohm Max.

Cannot be used as the charging

To ensure the best usage, please operate it based on the working height.  
Based on the engineering drawings, shall not exceed the maximum allowed compression.



SCALE	10:1	UNIT:mm	THIS DOCUMENT IS THE SOLE PROPERTY OF CFE CORPORATION CO.,LTD., AND SHOULD NOT BE USED IN WHOLE OR IN PART WITHOUT PRIOR WRITTEN PERMISSION.	
ANGEL	$\pm 1^\circ$	A4	SHEET: 1 of 1	
0~6	$\pm 0.05$			
6~30	$\pm 0.10$	DRAW	PART NO.	BF10001
30~150	$\pm 0.15$	CHECK	FILE NAME	BF100XX
GENERAL TOLERANCE UNLESS OTHERWISE NOTED		APPRO	TITLE.	Pogo pin connector

**CFE** 东莞市川富电子有限公司  
CFE CORPORATION CO.,LTD.

_____	D0	2013.05.30	NEW
ECN(DCN) NO.	REV	DATE	DESCRIPTION