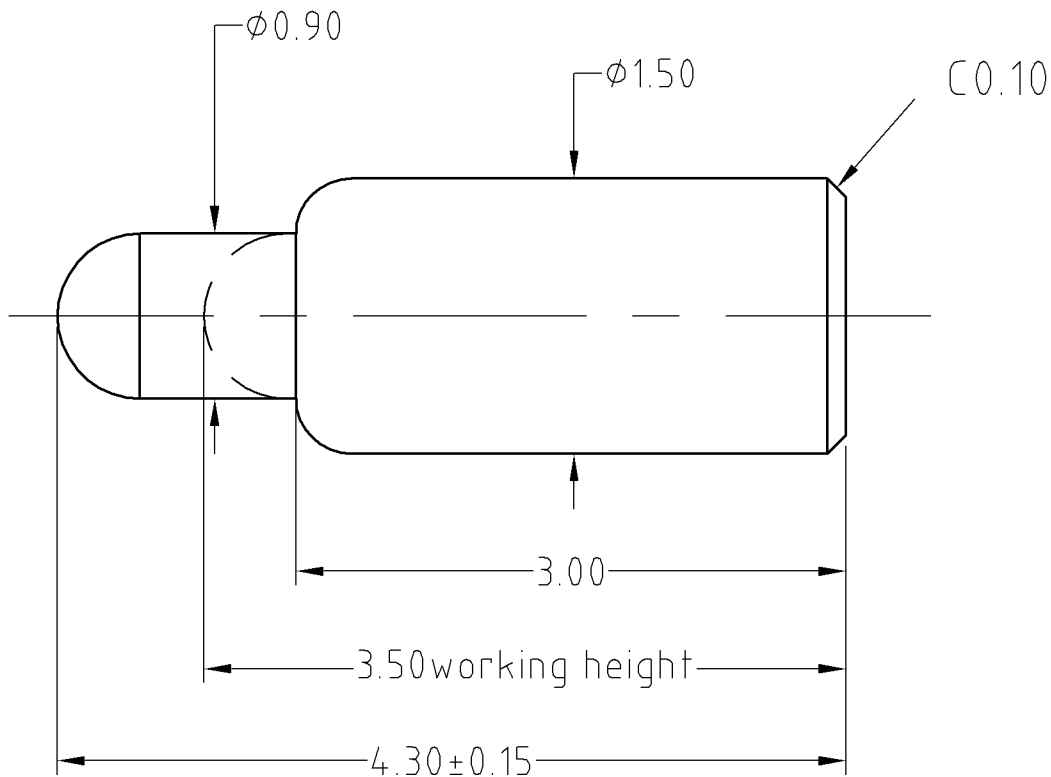


Note:
 Materials:
 .Plunger: Brass 10u" Au over Ni
 .Barrel: Brass 4u" Au over Ni
 .Spring: SUS
 Mechanical:
 .Contact force: 100g±20g at 3.50mm working height
 .Full stroke: 1.2mm
 .Life test: 10,000 cycles
 Electrical:
 .Rated current & voltage: DC 12V; 2A Max.
 .Contact resistance: 30 milliohm Max.
 RoHS compliant

To ensure the best usage, please operate it based on the working height.
 Based on the engineering drawings, shall not exceed the maximum allowed compression.



SCALE	10:1	UNIT:mm	THIS DOCUMENT IS THE SOLE PROPERTY OF CFE CORPORATION CO.,LTD., AND SHOULD NOT BE USED IN WHOLE OR IN PART WITHOUT PRIOR WRITTEN PERMISSION.	SHEET: 1 of 1	PART NO.	BF12711
ANGEL	$\pm 1^\circ$	A4				
0.000	± 0.02					
0.00	± 0.05	DRAW				
0.0	± 0.10	CHECK				
GENERAL TOLERANCE UNLESS OTHERWISE NOTED	APPRO		TITLE.	Pogo pin connector		



ECN(DCN) NO.	REV	DATE	DESCRIPTION	CHANGE	APPRO
	D0	2013.05.30	NEW		