

1

2

3

4

Note:

Materials:

.Plunger: Brass 20u" Au over 50u" Ni.

.Spring: SUS surface treatment

.Barrel: Brass 20u" Au over 50u" Ni.

Mechanical:

.Contact force: 70g±20g at 1.0mm working stroke

.Life test: 20,000 cycles

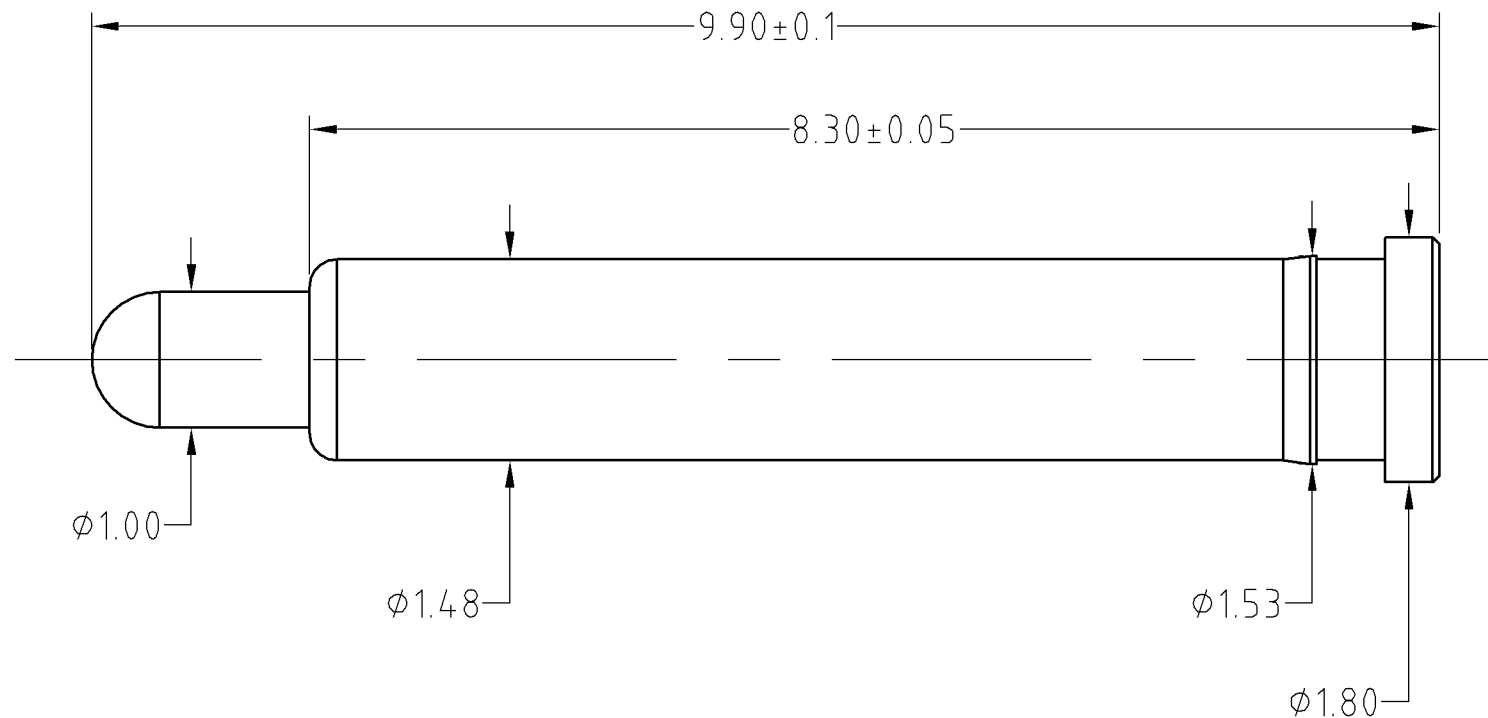
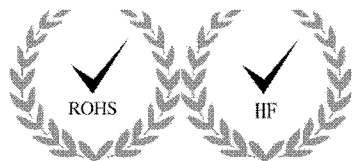
Electrical:

.Rated current & voltage: DC12V; 3A Max.

.Contact resistance: 50 milliohm Max.

To ensure the best usage, please operate it based on the working height.
Based on the engineering drawings, shall not exceed the maximum allowed compression.

Approve Sign



	A0	2013.12.26	NEW
ECN(DCN) NO.	REV	DATE	DESCRIPTION

SCALE	10:1	UNIT:mm	THIS DOCUMENT IS THE SOLE PROPERTY OF CFE CORPORATION CO.,LTD., AND SHOULD NOT BE USED IN WHOLE OR IN PART WITHOUT PRIOR WRITTEN PERMISSION.	
ANGEL	±1°	A4	SHEET: 1 of 1	
0-6	±0.05		PART NO.	BF13611
6-30	±0.10	DRAW	FILE NAME	BF136XX
30-150	±0.15	CHECK	TITLE.	Pogo pin connector
GENERAL TOLERANCE UNLESS OTHERWISE NOTED		APPRO		

