

Note:

Materials:

.Plunger: Brass 100u" Min. Ni

.Barrel: Brass 100u" Min. Ni

.Spring: SUS

Mechanical:

.Contact force: 180g±20% at 1.5mm working stroke

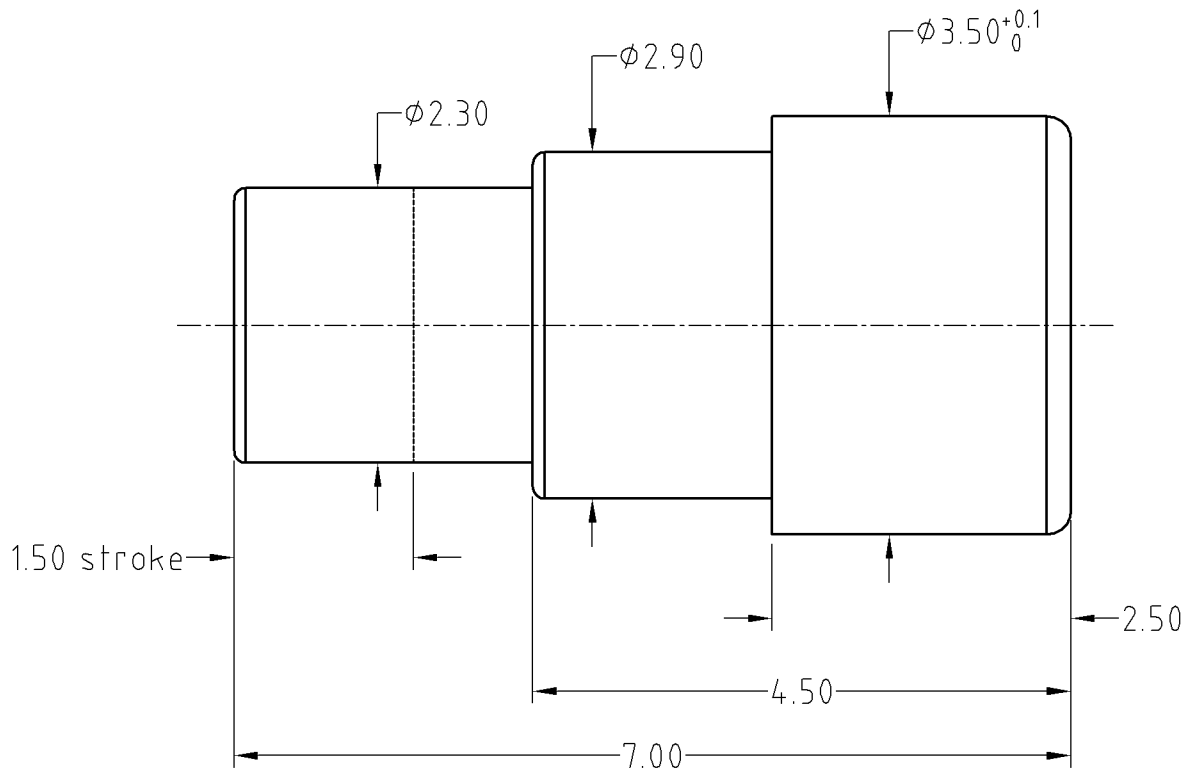
Environment:

.Salt fog Test: 8 hours

To ensure the best usage, please operate it based on the working height.  
Based on the engineering drawings, shall not exceed the maximum allowed compression.



Approve Sign



SCALE	10:1	UNIT:mm	THIS DOCUMENT IS THE SOLE PROPERTY OF CFE CORPORATION CO.,LTD., AND SHOULD NOT BE USED IN WHOLE OR IN PART WITHOUT PRIOR WRITTEN PERMISSION.	
ANGEL	±1°	A4	SHEET: 1 of 1	
0~6	±0.05		PART NO.	BF15001
6~30	±0.10	DRAW	FILE NAME	BF15001
30~150	±0.15	CHECK	TITLE	Pogo pin connector
GENERAL TOLERANCE UNLESS OTHERWISE NOTED		APPRO		



_____	A0	2014.02.24	NEW
ECN(DCN) NO.	REV	DATE	DESCRIPTION