

Note:

Materials:

.Insulator: Black high temperature plastics U194 V-0

.Plunger: Brass 3u" Au over Ni

.Barrel: Brass 3u" Au over Ni

.Spring: SUS surface treatment

To ensure the best usage, please operate it based on the working height.

Based on the engineering drawings, shall not exceed the maximum allowed compression.

Mechanical:

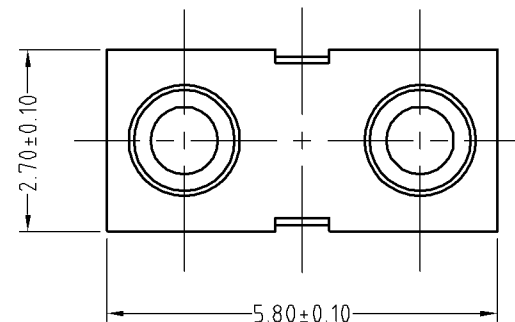
.Contact force: 70g±20g at 1.0mm working stroke

.Life test: 20,000 cycles

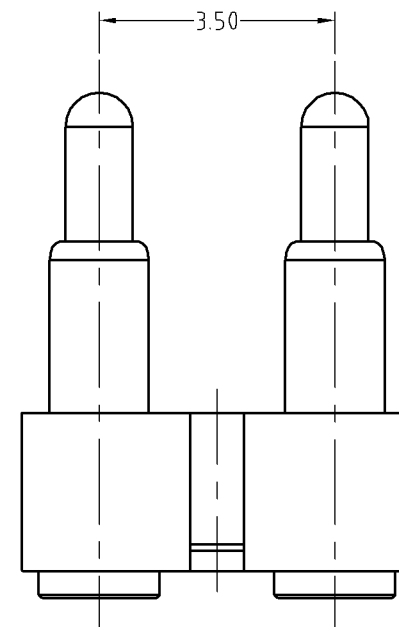
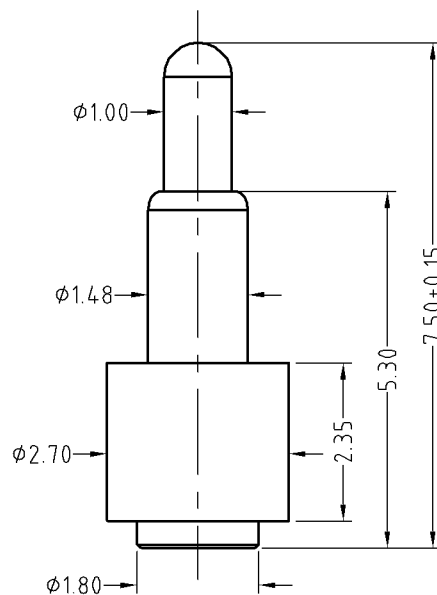
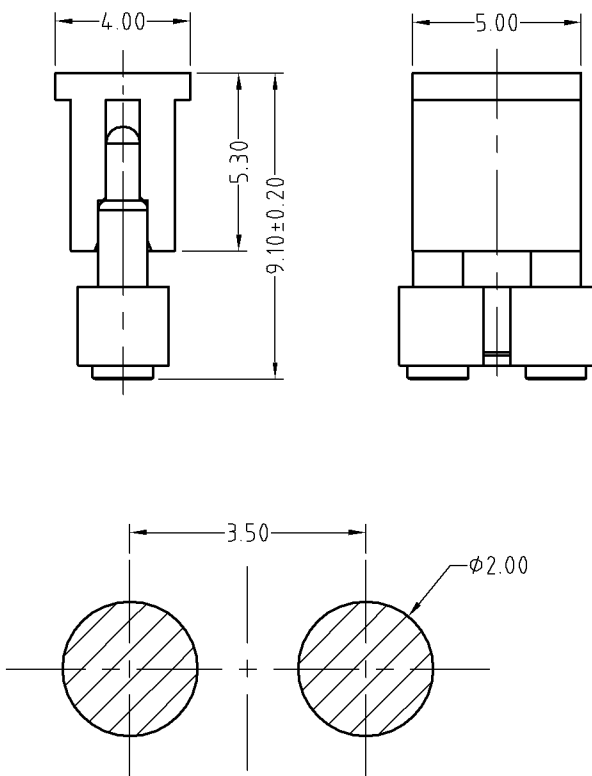
Electrical:

.Rated current & voltage: DC 12V, 1A

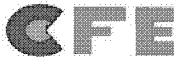

.Contact resistance: 50 milliohm Max.



Approve Sign



Recommended pcb layout  
layout tolerance: ±0.05mm

SCALE	10:1	UNIT:mm	THIS DOCUMENT IS THE SOLE PROPERTY OF CFE CORPORATION CO.,LTD., AND SHOULD NOT BE USED IN WHOLE OR IN PART WITHOUT PRIOR WRITTEN PERMISSION.	SHEET: 1 of 1	 <b>东莞市川富电子有限公司</b> CFE CORPORATION CO.,LTD.	
ANGEL	±1°	A4				
0-6	±0.05				PART NO.	BF19801-02350H1A
6-30	±0.10	DRAW			FILE NAME	BF198XX
30-150	±0.15	CHECK			TITLE	Pogo pin connector
GENERAL TOLERANCE UNLESS OTHERWISE NOTED		APPRO				

ECN(DCN) NO.	A0	2014.05.08	NEW
REV	DATE	DESCRIPTION	