

1

2

3

4

Note:

Materials: To ensure the best usage, please operate it based on the working height.
Based on the engineering drawings, shall not exceed the maximum allowed compression.

- .Plunger: Brass 3u" Au over Ni
- .Barrel: Brass 3u" Au over Ni
- .Spring: SUS surface treatment

Mechanical:

- .Contact force: 90g±20g at 1.0mm working stroke
- .Full stroke: 1.5mm
- .Life test: 20,000 cycles

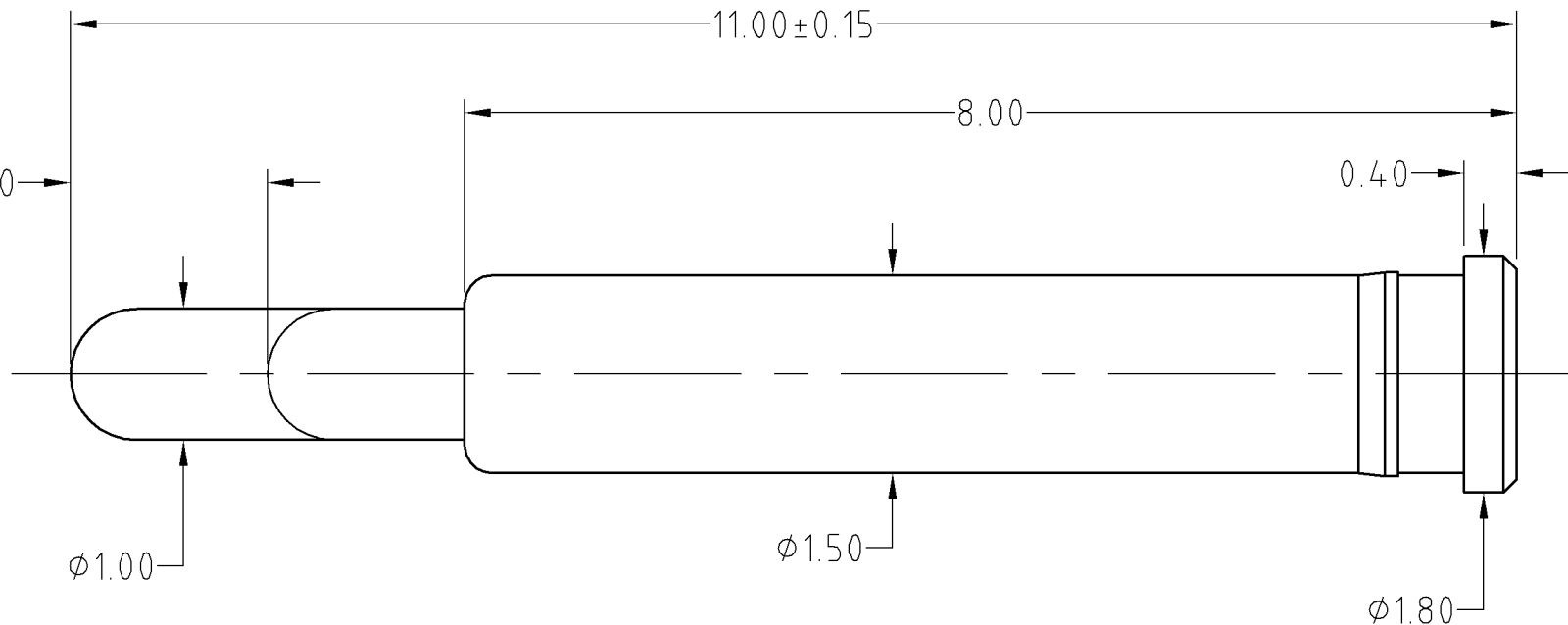
Electrical:

- .Rated current & voltage: DC 12V; 2.5A
- .Contact resistance: 50 milliohm Max.



Approve Sign

Full stroke 1.50



SCALE	10:1	UNIT:mm	THIS DOCUMENT IS THE SOLE PROPERTY OF CFE CORPORATION CO.,LTD., AND SHOULD NOT BE USED IN WHOLE OR IN PART WITHOUT PRIOR WRITTEN PERMISSION.	
ANGEL	±1°	A4	SHEET: 1 of 1	
0~6	±0.05		PART NO. BF19901	
6~30	±0.10	DRAW	FILE NAME BF199XX	
30~150	±0.15	CHECK	TITLE. Pogo pin connector	
GENERAL TOLERANCE UNLESS OTHERWISE NOTED		APPRO		

CFE 东莞市川富电子有限公司
CFE CORPORATION CO.,LTD.

_____	D0	2013.05.30	NEW
ECN(DCN) NO.	REV	DATE	DESCRIPTION