

Note:

Materials:

.Plunger: Brass 0.025um Au over Ni

.Barrel: Brass 0.025um Au over Ni

.Spring: SUS surface treatment

Mechanical:

.Contact force: 250g±40g at 3.3mm working height

.Life test: 10,000 cycles

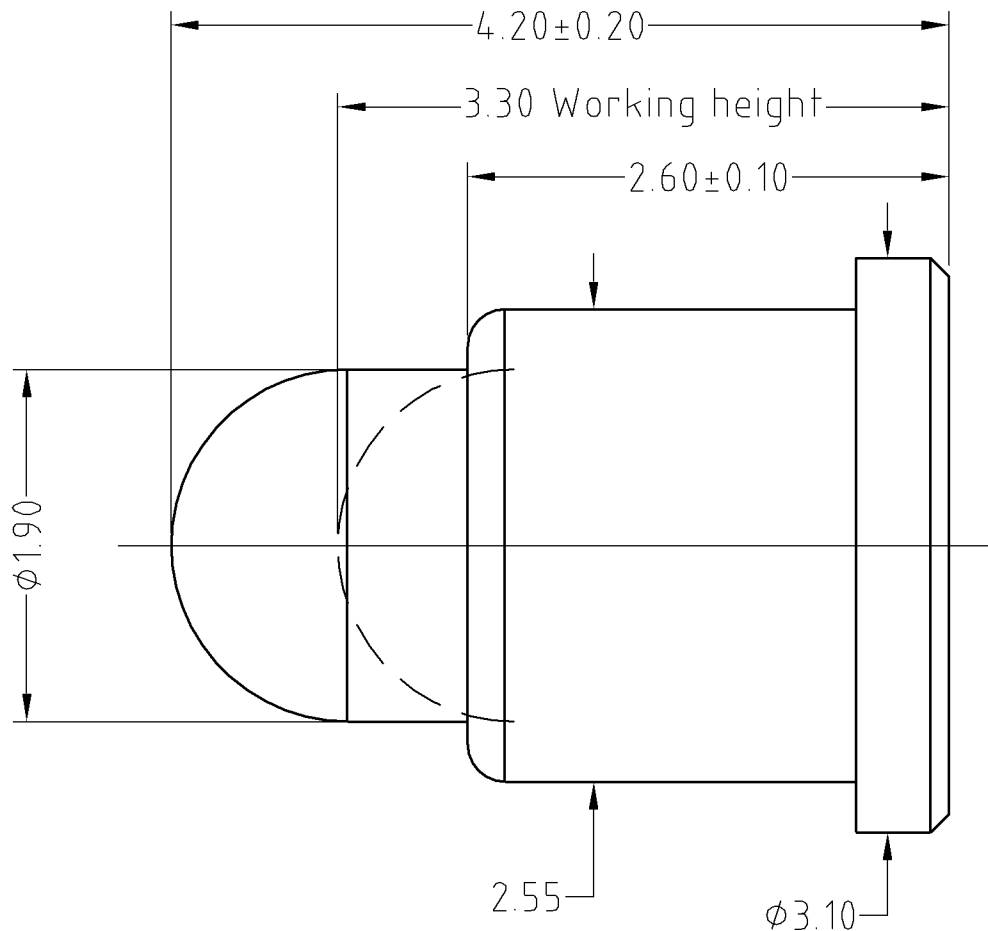
Electrical:

.Rated current & voltage: DC 12V; 1A

.Contact resistance: 100 milliohm Max.

Cannot be used as the charging,

To ensure the best usage, please operate it based on the working height.
Based on the engineering drawings, shall not exceed the maximum allowed compression.



Approve Sign

SCALE	10:1	UNIT:mm	THIS DOCUMENT IS THE SOLE PROPERTY OF CFE CORPORATION CO.,LTD., AND SHOULD NOT BE USED IN WHOLE OR IN PART WITHOUT PRIOR WRITTEN PERMISSION.	
ANGEL	±1°	A4	SHEET: 1 of 1	
0~6	±0.05			
6~30	±0.10	DRAW	PART NO.	BF25011
30~150	±0.15	CHECK	FILE NAME	BF250XX
GENERAL TOLERANCE UNLESS OTHERWISE NOTED	APPRO		TITLE	Pogo pin connector



ECN(DCN) NO.	D0	2014.08.08	NEW
REV	DATE	DESCRIPTION	