

Note:

Materials:

.Plunger: Brass 1.25um-2.5um Ni

.Barrel: Brass 1.25um-2.5um Ni

.Spring: SUS

Mechanical:

.Contact force: 250g±20% at 4.0mm working stroke

.Full stroke: 3.20mm

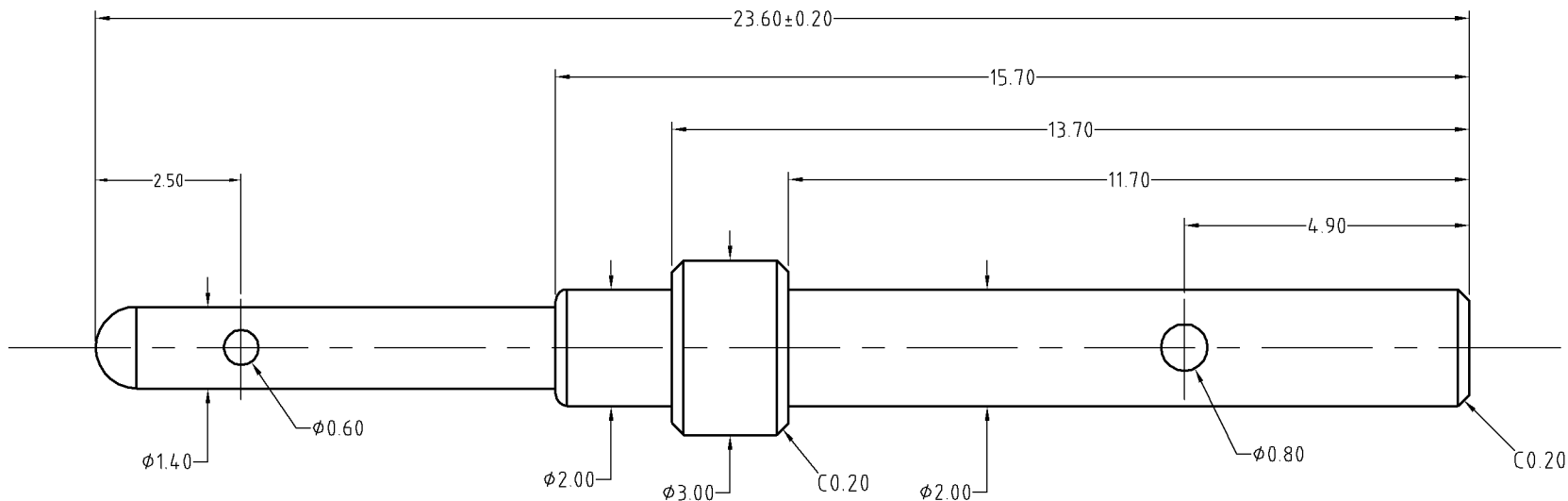
.Life test: 10,000 cycles



To ensure the best usage, please operate it based on the working height.

Based on the engineering drawings, shall not exceed the maximum allowed compression.



Approve Sign



SCALE	10:1	UNIT:mm	THIS DOCUMENT IS THE SOLE PROPERTY OF CFE CORPORATION CO.,LTD., AND SHOULD NOT BE USED IN WHOLE OR IN PART WITHOUT PRIOR WRITTEN PERMISSION.	 东莞市川富电子有限公司 CFE CORPORATION CO.,LTD.
ANGEL	±1°	A4		
0-6	±0.05		SHEET: 1 of 1	
6-30	±0.10	DRAW	PART NO.	BF31911
30-150	±0.15	CHECK	FILE NAME	BF319XX
GENERAL TOLERANCE UNLESS OTHERWISE NOTED		APPRO	TITLE	Pogo pin connector

ECN(DCN) NO.	D0	2014.12.09	NEW
REV	DATE	DESCRIPTION	