

Note:

Materials:

.Plunger: Brass 0.125um Au over Ni

.Barrel: Brass 0.125um Au over Ni

.Spring: SUS surface treatment

Mechanical:

.Contact force: 60g±20g at 0.8mm working stroke

.Full stroke: 0.8mm

.Life test: 20,000 cycles

Electrical:

.Rated current & voltage: DC 12V; 0.1A

.Contact resistance: 50 milliohm Max.

Cannot be used as the charging,

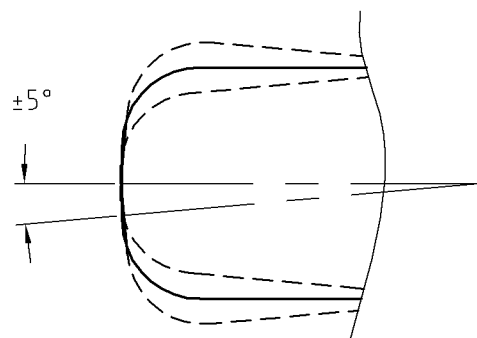
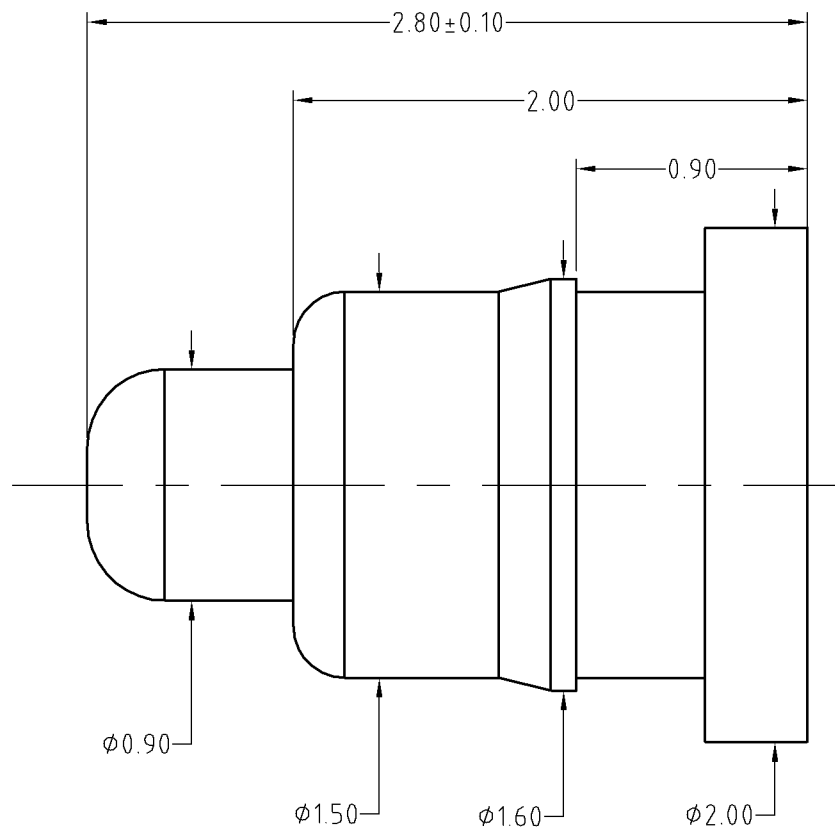
To ensure the best usage, please operate it based on the working height.
Based on the engineering drawings, shall not exceed the maximum allowed compression.

A

B

C

D



模拟极限偏摆角度



Approve Sign

SCALE	10:1	UNIT:mm	THIS DOCUMENT IS THE SOLE PROPERTY OF CFE CORPORATION CO.,LTD., AND SHOULD NOT BE USED IN WHOLE OR IN PART WITHOUT PRIOR WRITTEN PERMISSION.	
ANGEL	±1°	A4	SHEET: 1 of 1	
0-6	±0.10			
6-30	±0.15	DRAW	PART NO.	BF36211
30-150	±0.20	CHECK	FILE NAME	BF362XX
GENERAL TOLERANCE UNLESS OTHERWISE NOTED	APPRO		TITLE	Pogo pin connector



ECN(DCN) NO.	A0	2015.01.30	NEW
REV	DATE	DESCRIPTION	