

Note:

Materials:

- .Insulator: Black HTN U194 V-0
- .Plunger: Brass 1um Au over 2.5um Ni
- .Barrel: Brass 0.125um Au over 2.5um Ni
- .Spring: SUS 0.025um Au

Mechanical:

- .Contact force: 25g±10g at 0.8mm working stroke
- .Full stroke: 0.9mm
- .Life test: 10,000 cycles

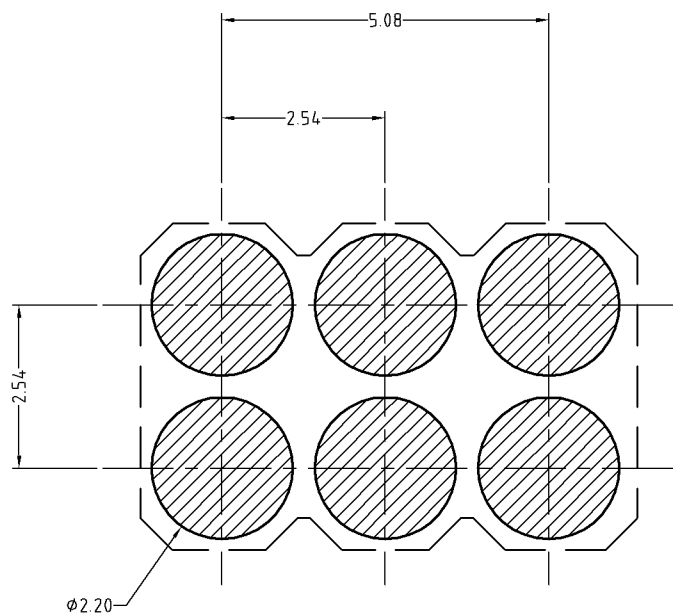
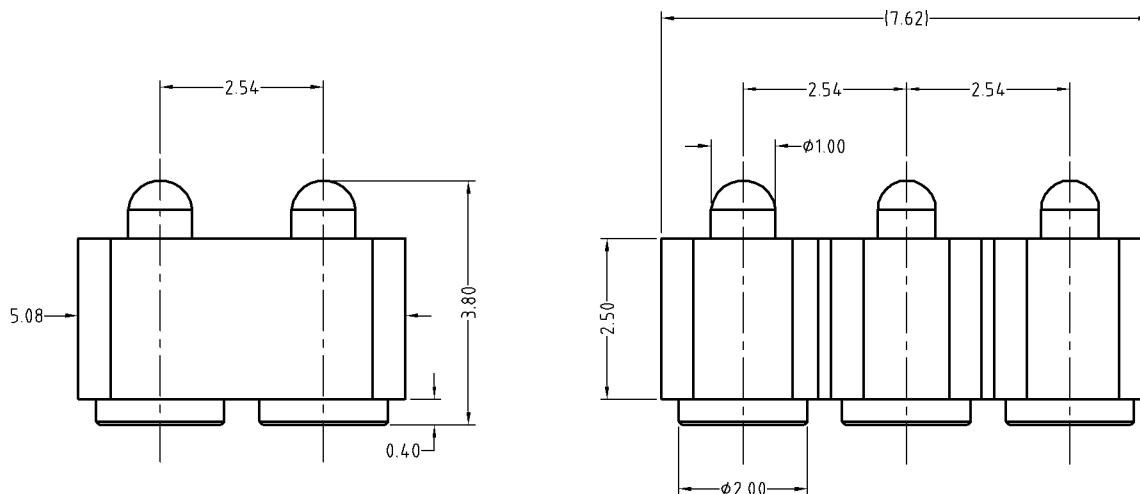
Electrical:

- .Rated current & voltage: DC 12V; 1A MAX
- .Contact resistance: 50 milliohm Max.

To ensure the best usage, please operate it based on the working height.
Based on the engineering drawings, shall not exceed the maximum allowed compression.

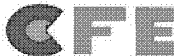


Approve Sign



Recommended pcb layout
Layout tolerance: ±0.05mm

ECN(DCN) NO.	D0	2015.02.04	NEW
REV	DATE	DESCRIPTION	

SCALE	10:1	UNIT:mm	THIS DOCUMENT IS THE SOLE PROPERTY OF CFE CORPORATION CO.,LTD., AND SHOULD NOT BE USED IN WHOLE OR IN PART WITHOUT PRIOR WRITTEN PERMISSION.	 东莞市川富电子有限公司 CFE CORPORATION CO.,LTD.	
ANGEL	±1°	A4			
0~6	±0.10		SHEET: 1 of 1	PART NO.	BF37211-06254B0A
6~30	±0.15	DRAW		FILE NAME	BF372XX
30~150	±0.20	CHECK		TITLE	Pogo pin connector
GENERAL TOLERANCE UNLESS OTHERWISE NOTED		APPRO			