

1

2

3

4

Note:

Materials: To ensure the best usage, please operate it based on the working height.
Based on the engineering drawings, shall not exceed the maximum allowed compression.

.Plunger: SUS 2.5um Ni

.Barrel: Brass 1.25um Au over Ni

.Spring: SUS surface treatment

Mechanical:

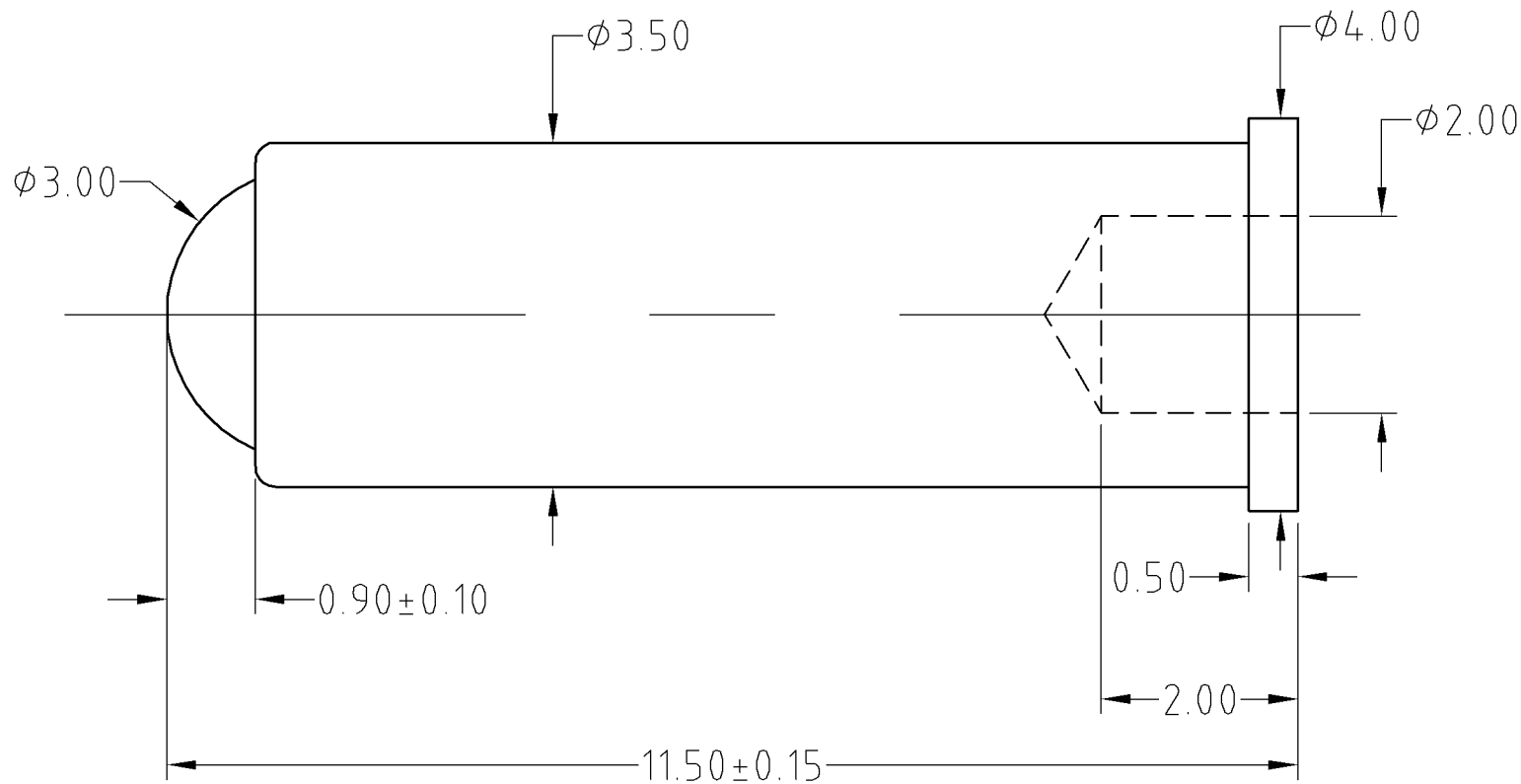
.Contact force: 100g±20% at 0.8mm working stroke

.Full stroke: 0.9mm

.Life test: 20,000 cycles



Approve Sign



SCALE	10:1	UNIT:mm	THIS DOCUMENT IS THE SOLE PROPERTY OF CFE CORPORATION CO.,LTD., AND SHOULD NOT BE USED IN WHOLE OR IN PART WITHOUT PRIOR WRITTEN PERMISSION.	
ANGEL	±1°	A4	SHEET: 1 of 1	
0-6	±0.05			
6-30	±0.10	DRAW	PART NO.	BF424.11
30-150	±0.15	CHECK	FILE NAME	BF424.XX
GENERAL TOLERANCE UNLESS OTHERWISE NOTED		APPRO	TITLE	Pogo pin connector

CFE 东莞市川富电子有限公司
CFE CORPORATION CO.,LTD.

ECN(DCN) NO.	D0	2015.05.06	NEW
REV	DATE	DESCRIPTION	