

1

2

3

4

Note:

Materials:

.Plunger: Brass 0.125um Au over Ni

.Barrel: Brass 0.125um Au over Ni

.Spring: SUS 304 surface treatment

Mechanical:

.Contact force: 70g±20g at 0.6mm working stroke

.Max. stroke: 0.80mm

.Life test: 20,000 cycles

Electrical:

.Rated current & voltage: DC 12V; 1A

.Contact resistance: 50 milliohm Max.

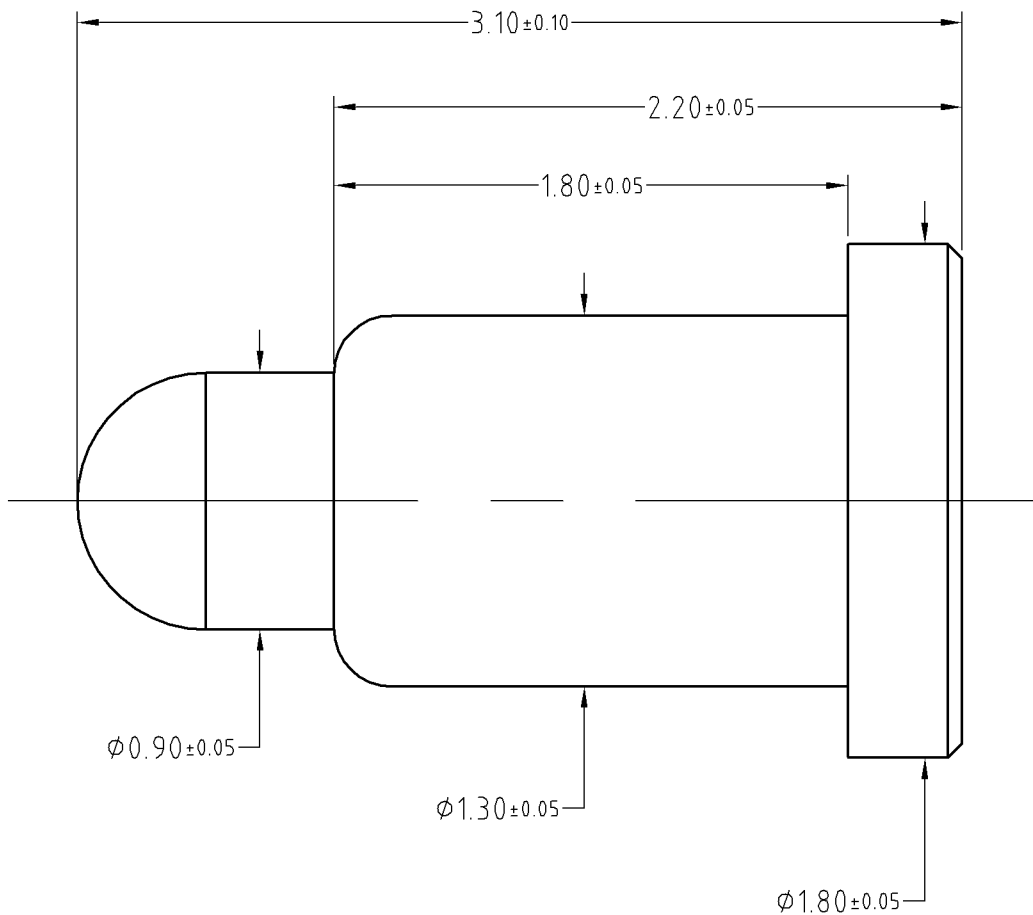
.Cannot be used as the charging

To ensure the best usage, please operate it based on the working height.

Based on the engineering drawings, shall not exceed the maximum allowed compression.



Approve Sign



SCALE	10:1	UNIT:mm	THIS DOCUMENT IS THE SOLE PROPERTY OF CFE CORPORATION CO.,LTD., AND SHOULD NOT BE USED IN WHOLE OR IN PART WITHOUT PRIOR WRITTEN PERMISSION.	
ANGEL	±1°	A4	SHEET: 1 of 1	
0~6	±0.10			
6~30	±0.20	DRAW		
30~150	±0.30	CHECK		
GENERAL TOLERANCE UNLESS OTHERWISE NOTED		APPRO		
			PART NO.	BF47111
			FILE NAME	BF471XX
			TITLE.	Pogo pin connector

CFE 东莞市川富电子有限公司
CFE CORPORATION CO.,LTD.

_____	D0	2015.07.07	NEW
ECN(DCN) NO.	REV	DATE	DESCRIPTION