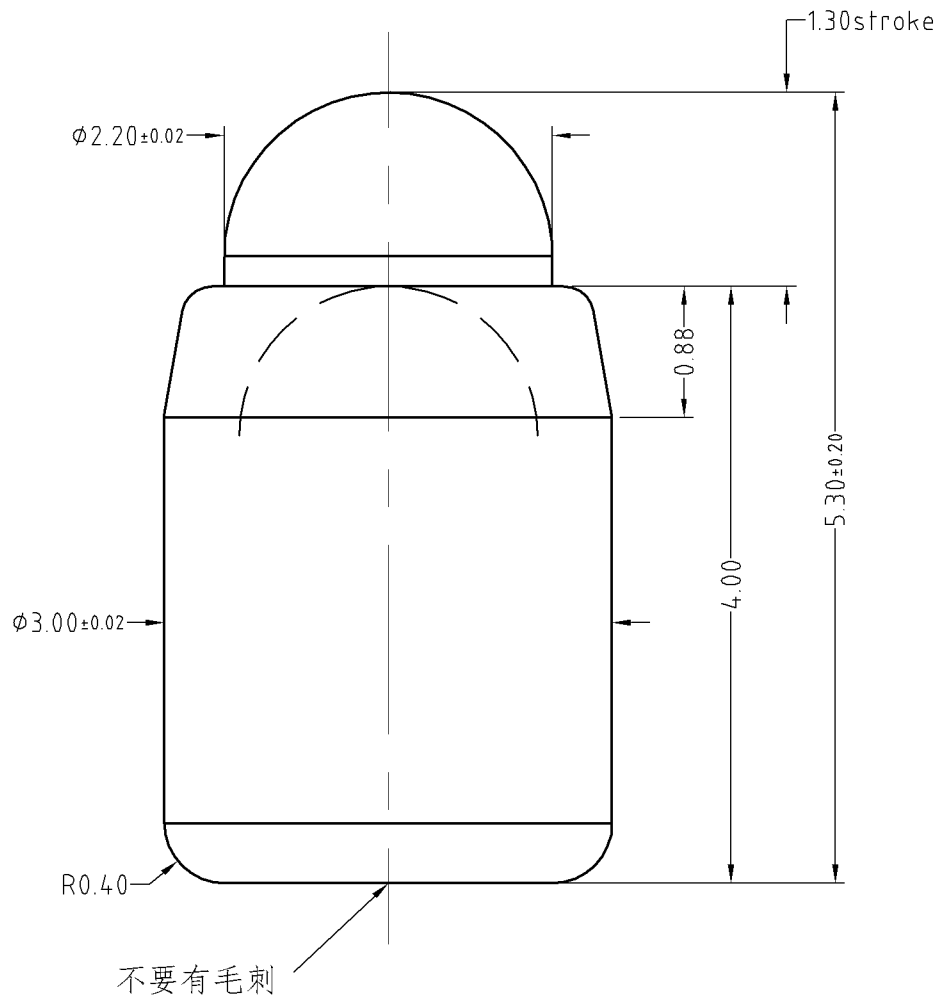


Note:  
 Materials:  
 .Plunger: Brass 0.125um Au over Ni  
 .Barrel: Brass 0.125um Au over Ni  
 .Spring: SUS 304 Au  
 Mechanical:  
 .Contact force: 150g±20% at 1.0mm working stroke  
 .Full stroke: 1.3mm  
 .Life test: 50,000 cycles  
 Electrical:  
 .Rated current & voltage: DC 12V; 1A  
 .Contact resistance: 50 milliohm Max.  
 .Cannot be used as the charging

To ensure the best usage, please operate it based on the working height.  
 Based on the engineering drawings, shall not exceed the maximum allowed compression.



Approve Sign



SCALE	10:1	UNIT:mm	THIS DOCUMENT IS THE SOLE PROPERTY OF CFE CORPORATION CO.,LTD., AND SHOULD NOT BE USED IN WHOLE OR IN PART WITHOUT PRIOR WRITTEN PERMISSION.	
ANGEL	±2°	A4	SHEET: 1 of 1	
0~6	±0.05		PART NO.	BF56111
6~30	±0.10	DRAW	FILE NAME	BF561XX
30~150	±0.15	CHECK	TITLE.	Pogo pin
GENERAL TOLERANCE UNLESS OTHERWISE NOTED		APPRO		

**CFE** 东莞市川富电子有限公司  
 CFE CORPORATION CO.,LTD.

_____	D0	2015.12.02	NEW
ECN(DCN) NO.	REV	DATE	DESCRIPTION