

Note:

Materials:

.Plunger: Brass 0.75um Au over Ni

.Barrel: Brass 0.5um Au over Ni

.Spring: SUS surface treatment

Mechanical:

.Contact force: 200g±20% at 2.10mm working stroke

.Full stroke: 2.5mm

.Life test: 20,000 cycles

Electrical:

.Rated current & voltage: DC 12V; 30A

.Contact resistance: 50 milliohm Max.

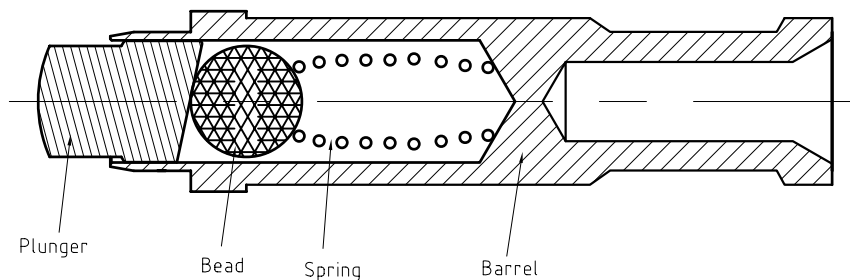
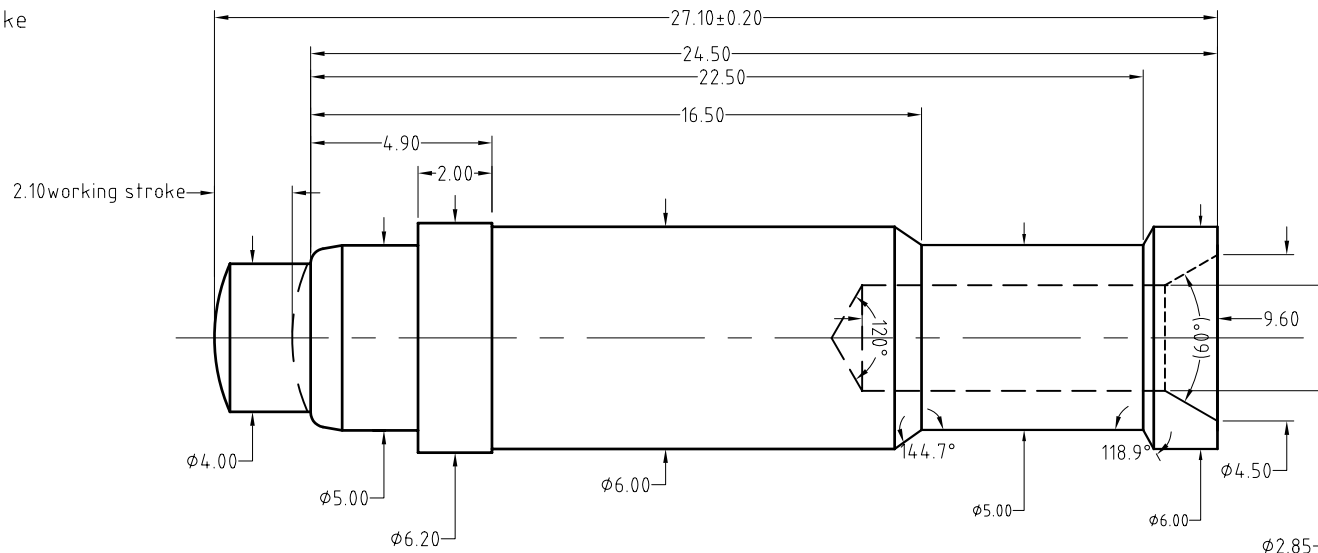
To ensure the best usage, please operate it based on the working height.
Based on the engineering drawings, shall not exceed the maximum allowed compression.



Approve Sign

B

BOM		
Part	NO.	Qty
Plunger	B381-P1030	1
Barrel	B931-B1020	1
Spring	B381-S1001	1
Bead	B381-T1000	1



D

SCALE	10:1	UNIT:mm	THIS DOCUMENT IS THE SOLE PROPERTY OF CFE CORPORATION CO.,LTD., AND SHOULD NOT BE USED IN WHOLE OR IN PART WITHOUT PRIOR WRITTEN PERMISSION.	东莞市川富电子有限公司 CFE CORPORATION CO.,LTD.	
ANGEL	±1°	A4			
0~6	±0.05		SHEET: 1 of 1	PART NO.	BP93111
6~30	±0.10	DRAW		FILE NAME	BP931XX
30~150	±0.15	CHECK		TITLE.	Pogo pin connector
GENERAL TOLERANCE UNLESS OTHERWISE NOTED		APPRO			

_____	D0	2016.12.27	NEW
ECN(DCN) NO.	REV	DATE	DESCRIPTION