

1

2

3

4

Note:

Materials:

.Plunger: Brass 0.25um Au over Ni

.Barrel: Brass 0.25um Au over Ni

.Spring: SUS 304 Au

Mechanical:

.Contact force: 145g±20% at 1.35mm working Stroke

.Full stroke: 2.0mm

.Life test: 20,000 cycles

Electrical:

.Rated current & voltage: DC 12V: 1A

.Contact resistance: 50 milliohm Max.

.Cannot be used as the charging

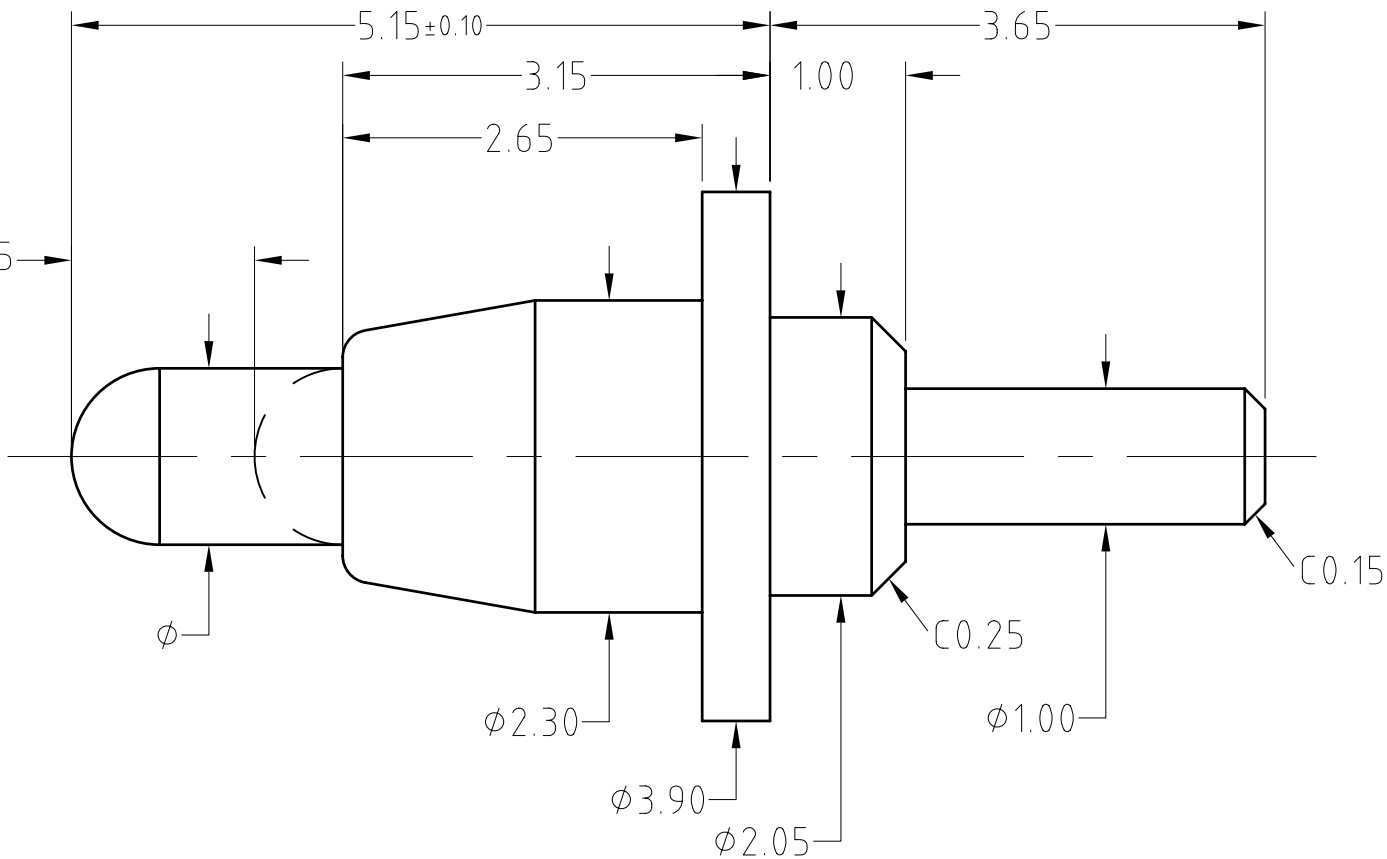
To ensure the best usage, please operate it based on the working height.

Based on the engineering drawings, shall not exceed the maximum allowed compression.



Approve Sign

Working stroke 1.35



SCALE	10:1	UNIT:mm	THIS DOCUMENT IS THE SOLE PROPERTY OF CFE CORPORATION CO.,LTD., AND SHOULD NOT BE USED IN WHOLE OR IN PART WITHOUT PRIOR WRITTEN PERMISSION.	
ANGEL	±2°	A4	SHEET: 1 of 1	
0~6	±0.05			
6~30	±0.10	DRAW	PART NO.	BP94511
30~150	±0.15	CHECK	FILE NAME	BP945XX
GENERAL TOLERANCE UNLESS OTHERWISE NOTED		APPRO	TITLE.	Pogo pin



ECN(DCN) NO.	D0	2017.01.18	NEW
REV	DATE	DESCRIPTION	