

1

2

3

4

Note:

Materials:

.Plunger: Brass 0.25um Au over Ni

.Barrel: Brass 0.25um Au over Ni

.Spring: SUS surface treatment

Mechanical:

.Contact force: 50g Min at 6.90mm working height

.Max working height: 6.80mm

.Life test: 20,000 cycles

Electrical:

.Rated current & voltage: DC 12V; 1A Max.

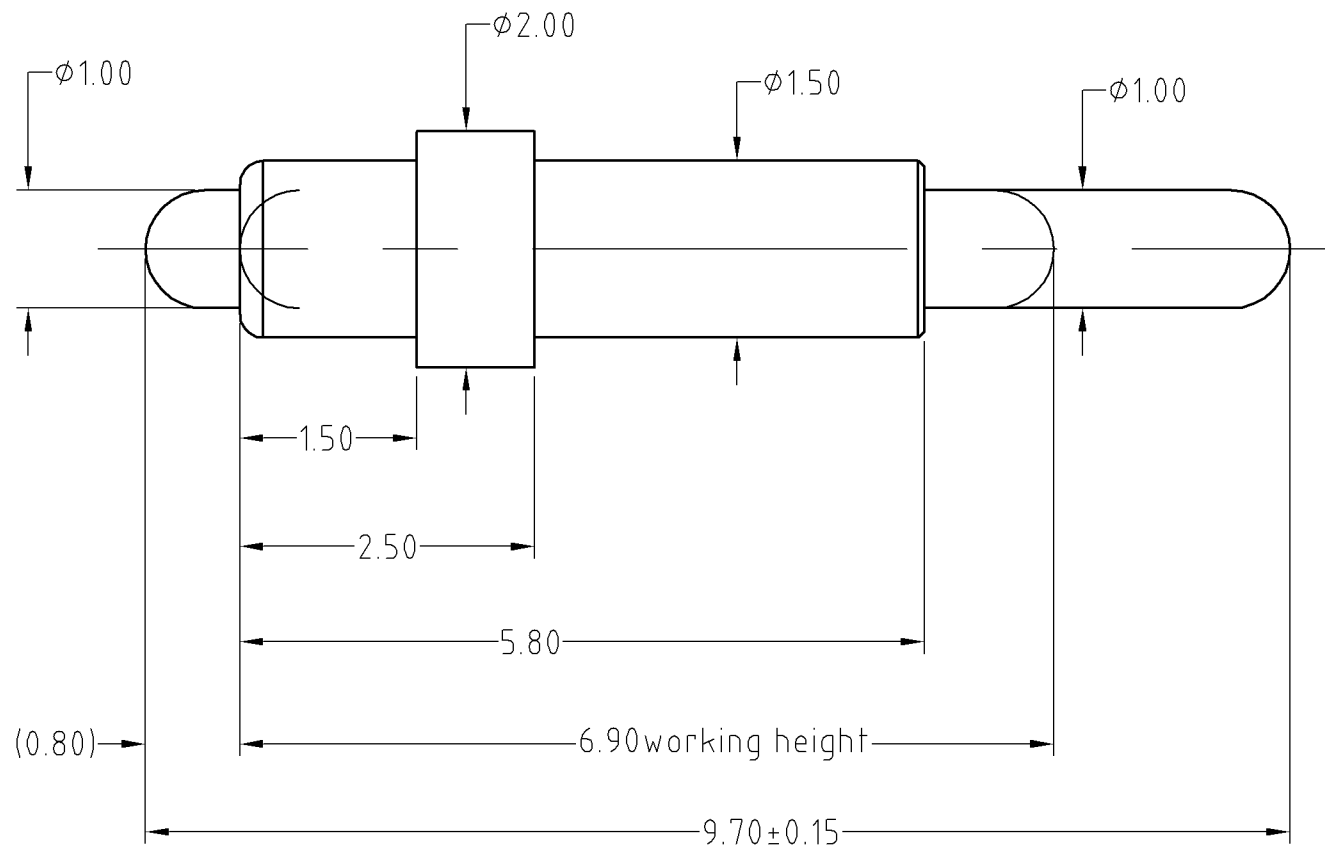
Cannot be used as the charging,

To ensure the best usage, please operate it based on the working height.

Based on the engineering drawings, shall not exceed the maximum allowed compression.



Approve Sign



	A0	2014.09.29	NEW
ECN(DCN) NO.	REV	DATE	DESCRIPTION

SCALE	10:1	UNIT:mm	THIS DOCUMENT IS THE SOLE PROPERTY OF CFE CORPORATION CO.,LTD., AND SHOULD NOT BE USED IN WHOLE OR IN PART WITHOUT PRIOR WRITTEN PERMISSION.			
ANGEL	±1°	A4	SHEET: 1 of 1			
0~6	±0.05					
6~30	±0.10	DRAW				
30~150	±0.15	CHECK				
GENERAL TOLERANCE UNLESS OTHERWISE NOTED		APPRO				
			PART NO.	BD14.121		
			FILE NAME	BD14.1XX		
			TITLE.	Pogo pin connector		

CFE 东莞市川富电子有限公司
CFE CORPORATION CO.,LTD.