

Note:

Materials:

.Plunger: Brass 10u" Au over Ni

.Barrel: Brass 10u" Au over Ni

.Spring: SUS surface treatment

Mechanical:

.Contact force: 50g±20% at 1.90mm working height

.Life test: 20,000 cycles

Electrical:

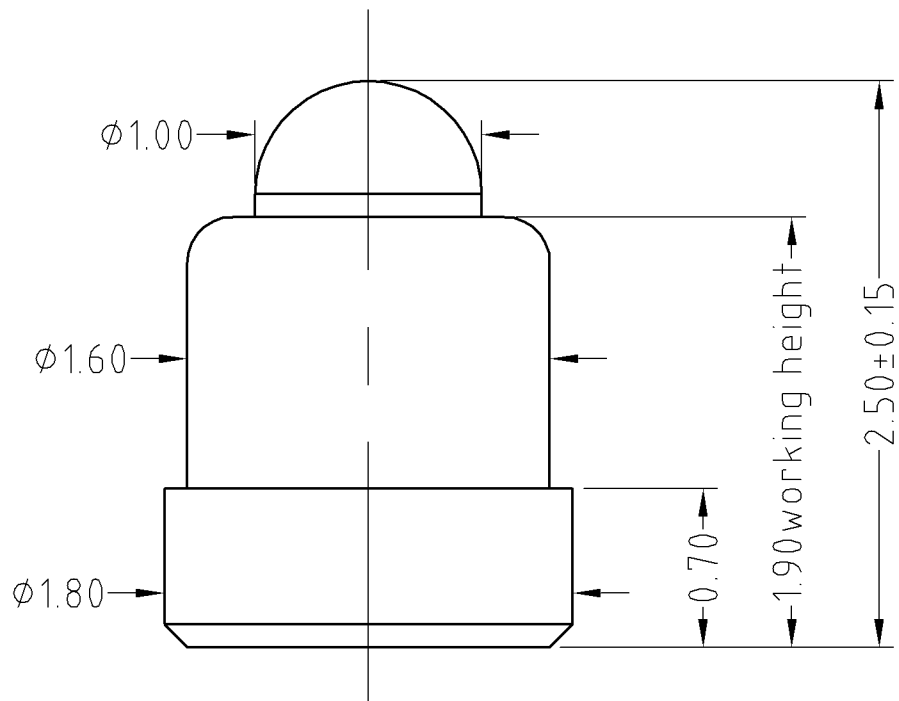
.Rated current & voltage: DC 12V; 0.5A Max.

.Contact resistance: 50 milliohm Max.

To ensure the best usage, please operate it based on the working height.
Based on the engineering drawings, shall not exceed the maximum allowed compression.



Approve Sign



SCALE	10:1	UNIT:mm	THIS DOCUMENT IS THE SOLE PROPERTY OF CFE CORPORATION CO.,LTD., AND SHOULD NOT BE USED IN WHOLE OR IN PART WITHOUT PRIOR WRITTEN PERMISSION.		CFE 东莞市川富电子有限公司 CFE CORPORATION CO.,LTD.
ANGEL	$\pm 1^\circ$	A4	SHEET: 1 of 1		
0-6	± 0.05				PART NO. BF16511
6-30	± 0.10	DRAW			FILE NAME BF165XX
30-150	± 0.15	CHECK			TITLE. Pogo pin connector
GENERAL TOLERANCE UNLESS OTHERWISE NOTED		APPRO			

	D0	2013.05.30	NEW
ECN(DCN) NO.	REV	DATE	DESCRIPTION