

Note:

Materials:

.Plunger: Brass 15u" Au over Ni

.Barrel: Brass 3u" Au over Ni

.Spring: SUS

Mechanical:

.Contact force: 200g±20% at working stroke

.Life test: 20,000 cycles

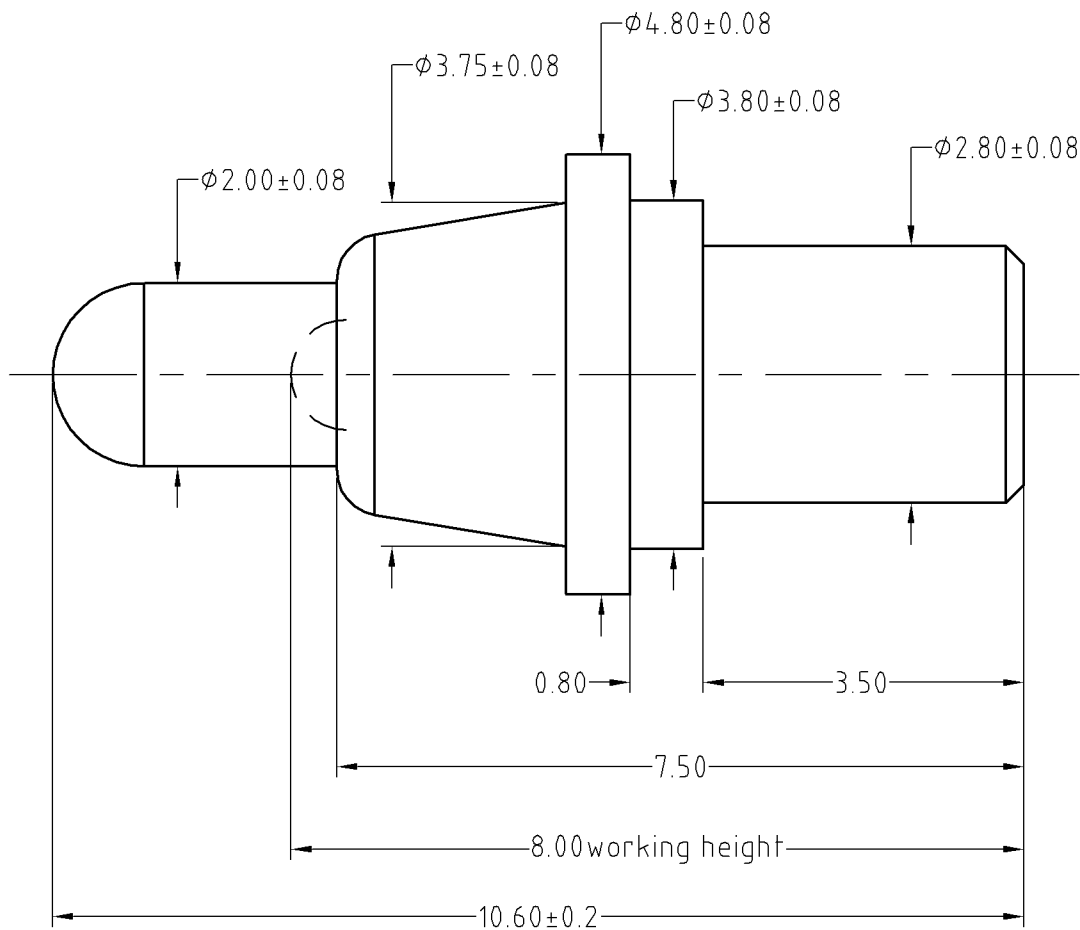
Electrical:

.Rated current & voltage: DC 12V; 1A

.Contact resistance: 50 milliohm Max.

To ensure the best usage, please operate it based on the working height.  
Based on the engineering drawings, shall not exceed the maximum allowed compression.

Approve Sign



SCALE	10:1	UNIT:mm	THIS DOCUMENT IS THE SOLE PROPERTY OF CFE CORPORATION CO.,LTD., AND SHOULD NOT BE USED IN WHOLE OR IN PART WITHOUT PRIOR WRITTEN PERMISSION.	SHEET: 1 of 1	PART NO.	BP01513
ANGEL	±1°	A4				
0-6	±0.05				TITLE	Pogo pin connector
6-30	±0.10	DRAW				
30-150	±0.15	CHECK				
GENERAL TOLERANCE UNLESS OTHERWISE NOTED		APPRO				

**CFE** 东莞市川富电子有限公司  
CFE CORPORATION CO.,LTD.

_____	D0	2013.05.30	NEW
ECN(DCN) NO.	REV	DATE	DESCRIPTION