

Note:

1.Mechanical demands

1.Contact force: 115g Min. at 0.6mm working stroke  
Contact force: 155g Max. at 1.0mm working stroke

2.Plating plunger: Brass 3u" Au over 50u" Ni.

Plating barrel: Brass 3u" Au over 50u" Ni.

3.Spring: SUS 304

2.Inspection

1.Rated current & voltage: DC12V; 1A

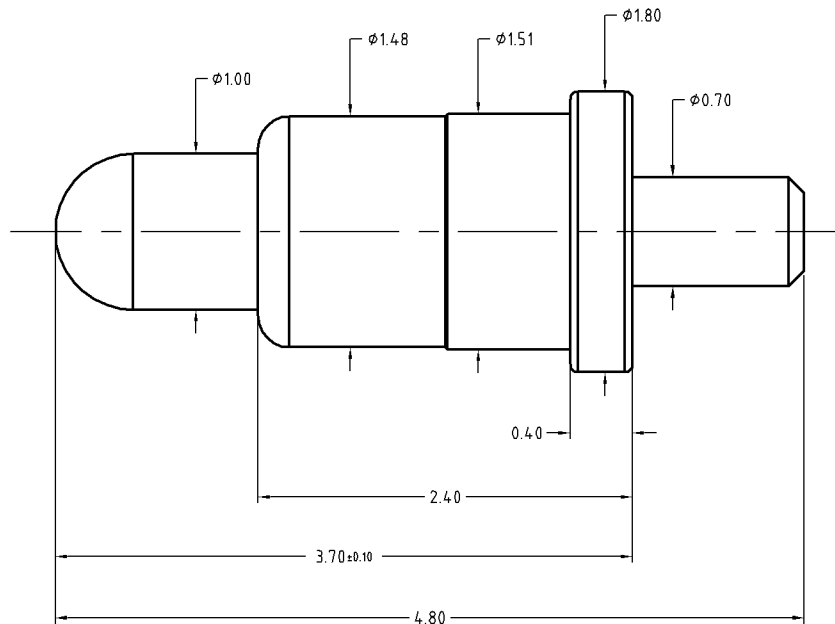
2.Life test: 20,000 cycles

3.Contact resistance: 50 mohm Max. at working stroke

To ensure the best usage, please operate it based on the working height.  
Based on the engineering drawings, shall not exceed the maximum allowed compression.



Approve Sign



BOM		
Part	NO.	Qty
Plunger	B042-P1003	1
Barrel	B042-B1003	1
Spring	B042-S1001	1

SCALE	10:1	UNIT:mm	THIS DOCUMENT IS THE SOLE PROPERTY OF CFE CORPORATION CO.,LTD., AND SHOULD NOT BE USED IN WHOLE OR IN PART WITHOUT PRIOR WRITTEN PERMISSION.	<b>CFE</b> 东莞市川富电子有限公司 CFE CORPORATION CO.,LTD.	
ANGEL	±2°	A4			
0~6	±0.05				SHEET: 1 of 1
6~30	±0.10	DRAW			PART NO. BP04211
30~150	±0.15	CHECK	FILE NAME BP042XX		
GENERAL TOLERANCE UNLESS OTHERWISE NOTED		APPRO		TITLE. Pogo pin	

_____	D1	2016.02.27	修改总长
_____	D0	2012.12.11	NEW
ECN(DCN) NO.	REV	DATE	DESCRIPTION