

1

2

3

4

Note:

Materials:

.Plunger: Brass 30u" Au over 50u" Ni

.Barrel: Brass 30u" Au over 50u" Ni

.Spring: SUS

Mechanical:

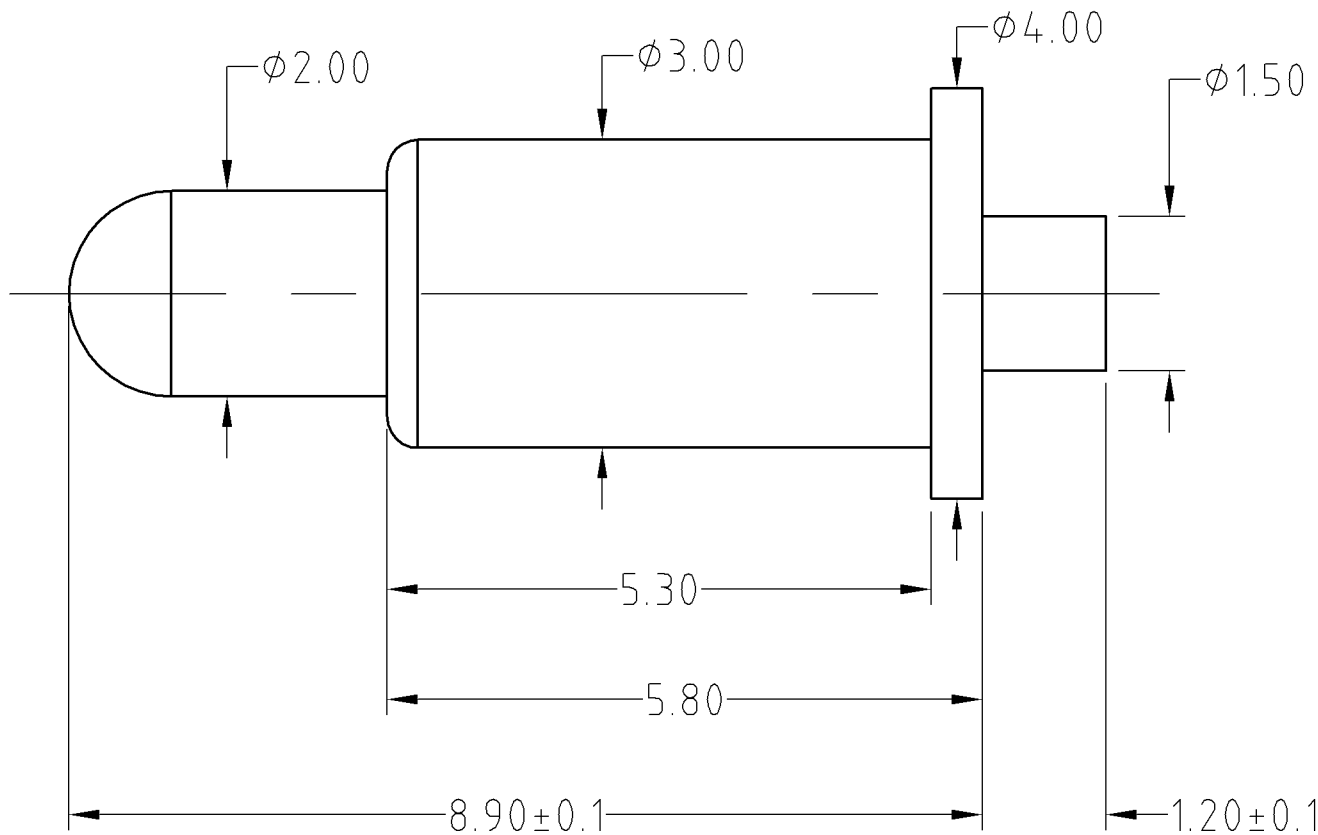
.Contact force: 160g±20% at 1.5mm working stroke

.Life test: 200,000 cycles

Electrical(working stroke):

.Rated current & voltage: DC12V; 5A Max.

Approve Sign



_____	A0	2013.07.16	NEW
ECN(DCN) NO.	REV	DATE	DESCRIPTION

SCALE	10:1	UNIT:mm	THIS DOCUMENT IS THE SOLE PROPERTY OF CFE CORPORATION CO.,LTD., AND SHOULD NOT BE USED IN WHOLE OR IN PART WITHOUT PRIOR WRITTEN PERMISSION.	
ANGEL	$\pm 1^\circ$	A4	SHEET: 1 of 1	
0.000	± 0.02			
0.00	± 0.05	DRAW	PART NO.	BP066XX
0.0	± 0.10	CHECK	FILE NAME	BP06611
GENERAL TOLERANCE UNLESS OTHERWISE NOTED		APPRO	TITLE.	Pogo pin connector

