

1

2

3

4

Note:

Materials:

.Plunger: Brass 3u" Au over Ni

.Barrel: Brass 3u" Au over Ni

.Spring: SUS surface treatment

Mechanical:

.Contact force: 60g±20g at 0.6mm working stroke

.Life test: 20,000 cycles

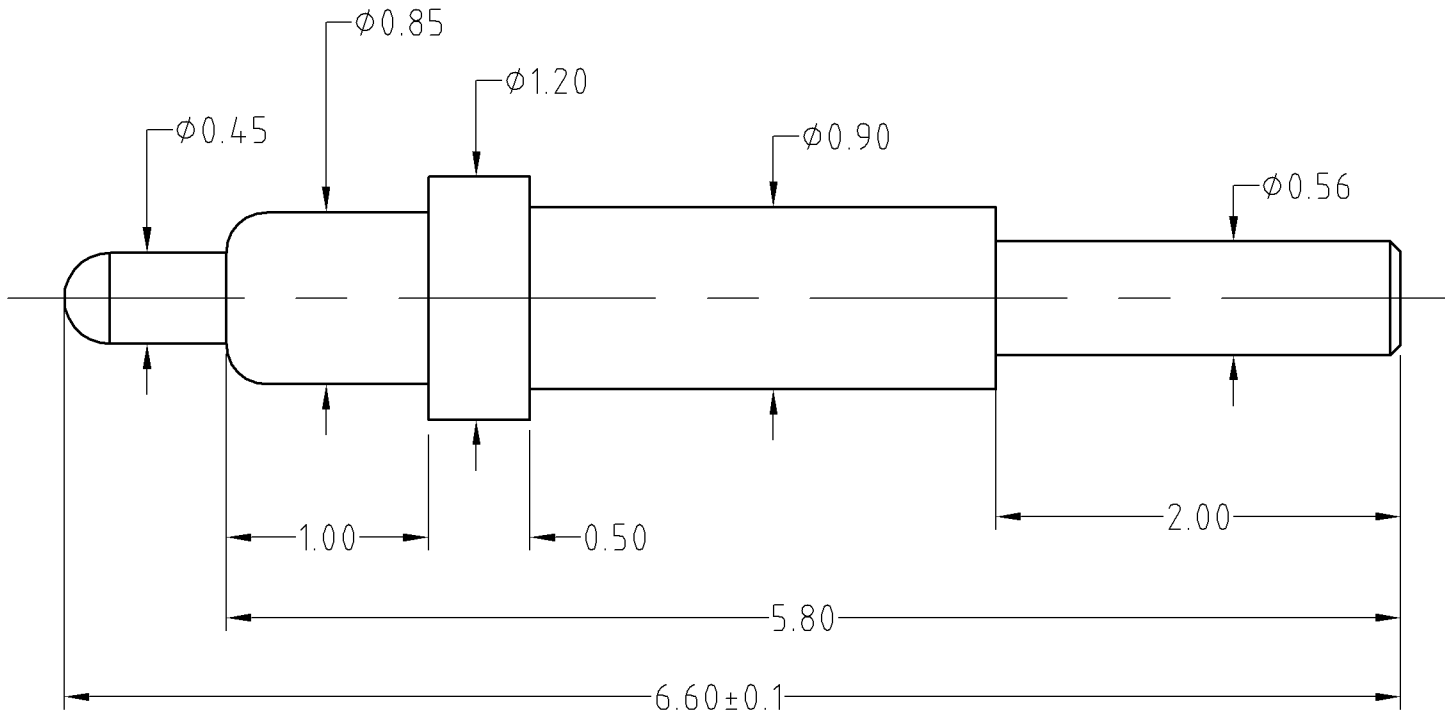
Electrical:

.Rated current & voltage: DC 12V; 1A

To ensure the best usage, please operate it based on the working height.  
Based on the engineering drawings, shall not exceed the maximum allowed compression.



Approve Sign



SCALE	10:1	UNIT:mm	THIS DOCUMENT IS THE SOLE PROPERTY OF CFE CORPORATION CO.,LTD., AND SHOULD NOT BE USED IN WHOLE OR IN PART WITHOUT PRIOR WRITTEN PERMISSION.	
ANGEL	$\pm 1^\circ$	A4	SHEET: 1 of 1	
0~6	$\pm 0.05$		PART NO.	BP07212
6~30	$\pm 0.10$	DRAW	FILE NAME	BP072XX
30~150	$\pm 0.15$	CHECK	TITLE.	Pogo pin connector
GENERAL TOLERANCE UNLESS OTHERWISE NOTED		APPRO		



_____	A0	2014.04.17	NEW
ECN(DCN) NO.	REV	DATE	DESCRIPTION