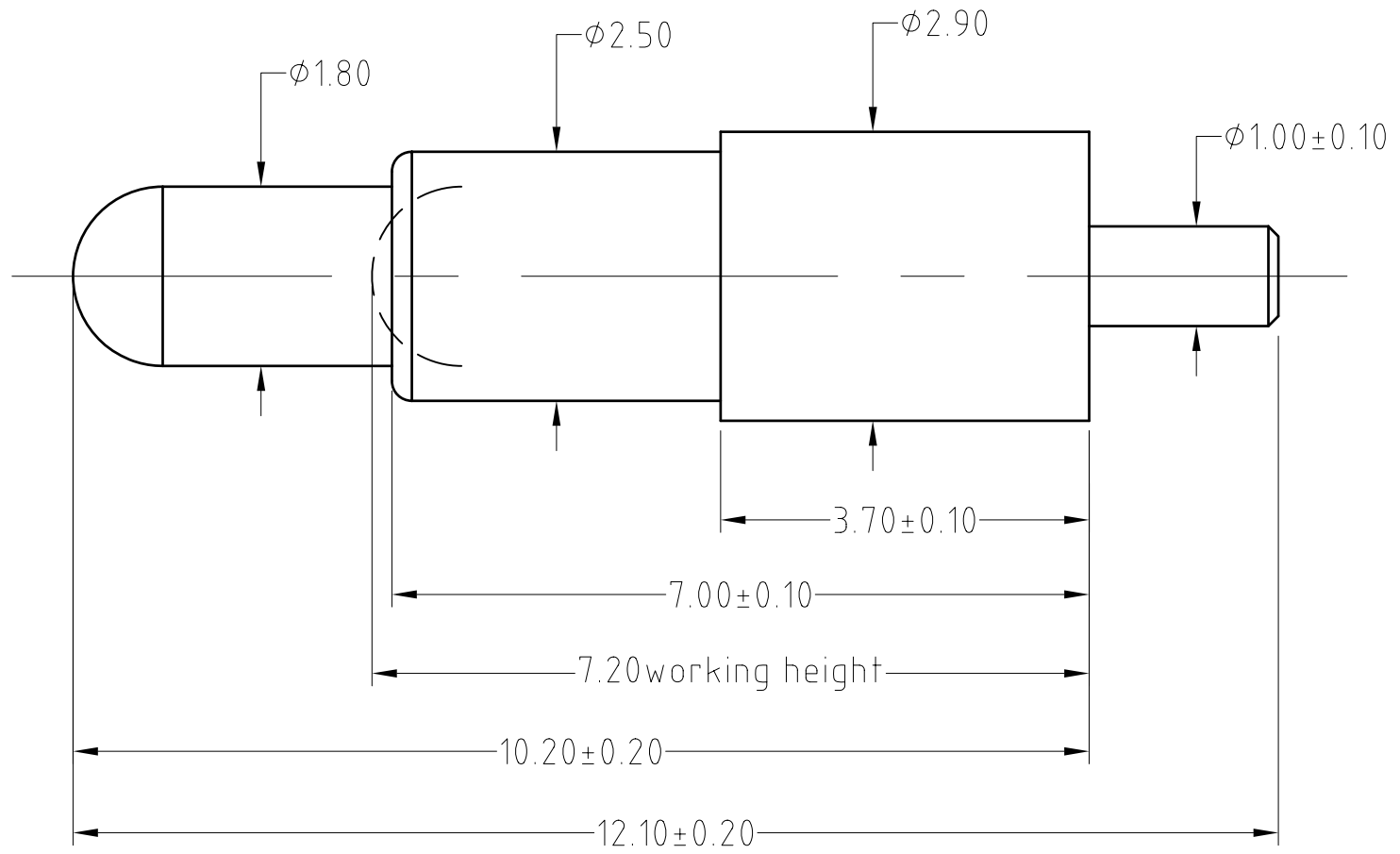


No.	Qty	Part	Spec
B094-B1005	1	Barrel	Brass C3604 0.125um Au over Ni
B094-P1005	1	Spring	Brass C3604 0.125um Au over Ni
B094-S1001	1	Spring	SUS 304

To ensure the best usage, please operate it based on the working height.  
Based on the engineering drawings, shall not exceed the maximum allowed compression.



Approve  
Sign



Note:

Working height	7.20 mm
Spring force	120g+/-20%
Life test-1.0mm stroke	50,000 cycles
Rated current	1 A
Rated voltage	50 V
Contact resistance	50 milliohm Max.

SCALE	10:1	UNIT:mm	THIS DOCUMENT IS THE SOLE PROPERTY OF CFE CORPORATION CO.,LTD., AND SHOULD NOT BE USED IN WHOLE OR IN PART WITHOUT PRIOR WRITTEN PERMISSION.
ANGEL	±1°	A4	
0~6	±0.05		
6~30	±0.10	DRAW	
30~150	±0.15	CHECK	
GENERAL TOLERANCE UNLESS OTHERWISE NOTED		APPRO	

**CFE** 东莞市川富电子有限公司  
CFE CORPORATION CO.,LTD.

PART NO.	BP094.12
FILE NAME	BP094.11
TITLE.	Pogo pin connector

ECN(DCN) NO.	REV	DATE	DESCRIPTION
	A0	2015.05.20	NEW