

1

2

3

4

Note:

Materials:

.Bead: SUS 50u" Au over 50u" Ni

.Barrel: Brass 5u" Au over 50u" Ni

.Spring: SUS

Mechanical:

.Contact force: 50g±20% at 0.6mm working stroke

.Life test: 100,000 cycles (axial)

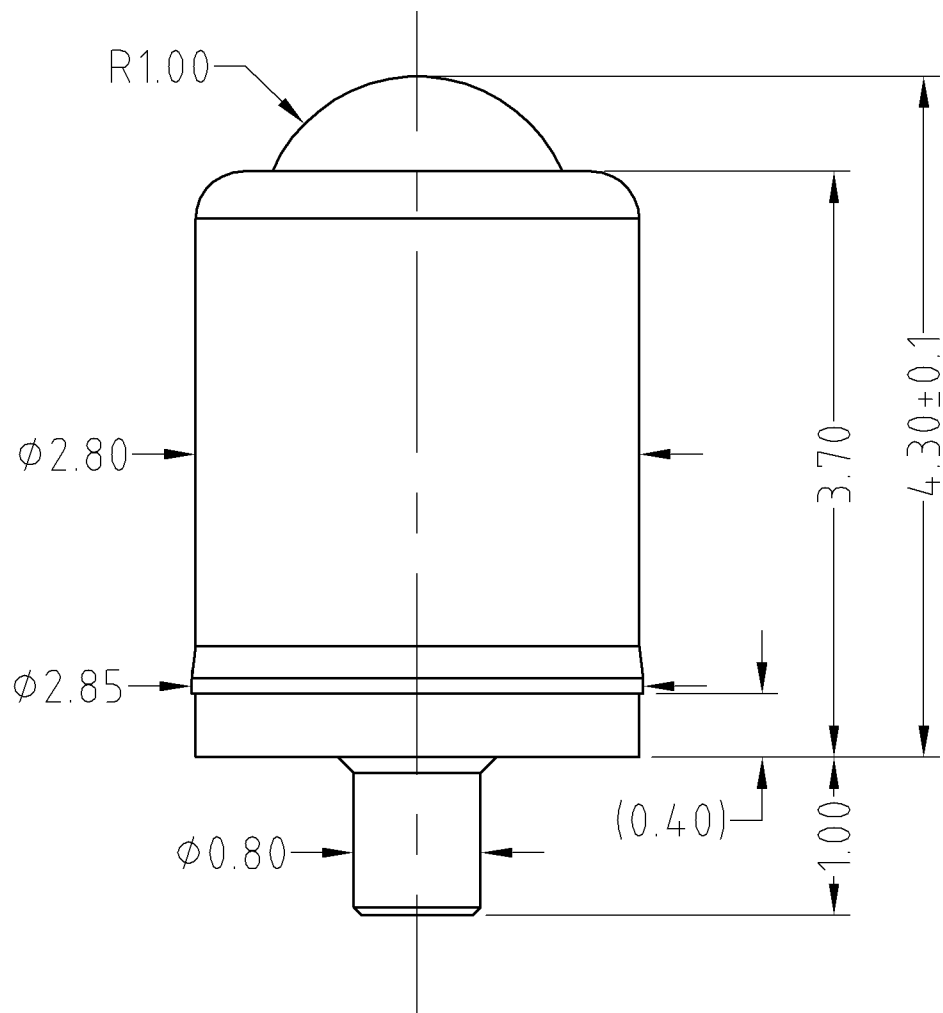
Electrical:

.Rated current & voltage: DC 12V; 1A

.Contact resistance: 50 milliohm Max.

To ensure the best usage, please operate it based on the working height.
Based on the engineering drawings, shall not exceed the maximum allowed compression.

Approve Sign



SCALE	10:1	UNIT:mm	THIS DOCUMENT IS THE SOLE PROPERTY OF CFE CORPORATION CO.,LTD., AND SHOULD NOT BE USED IN WHOLE OR IN PART WITHOUT PRIOR WRITTEN PERMISSION.	
ANGEL	±1°	A4	SHEET: 1 of 1	
0.000	±0.02		PART NO.	BP10611
0.00	±0.05	DRAW	FILE NAME	BP10611
0.0	±0.10	CHECK	TITLE	Pogo pin connector
GENERAL TOLERANCE UNLESS OTHERWISE NOTED		APPRO		

CFE 东莞市川富电子有限公司
CFE CORPORATION CO.,LTD.

	A1	2014.04.18	修改台阶位置
	A0	2013.09.11	NEW
ECN(DCN) NO.	REV	DATE	DESCRIPTION