

1

2

3

4

Note:

Materials:

- .Bead: SUS 50u" Au over 50u" Ni
- .Barrel: Brass 5u" Au over 50u" Ni
- .Spring: SUS

Mechanical:

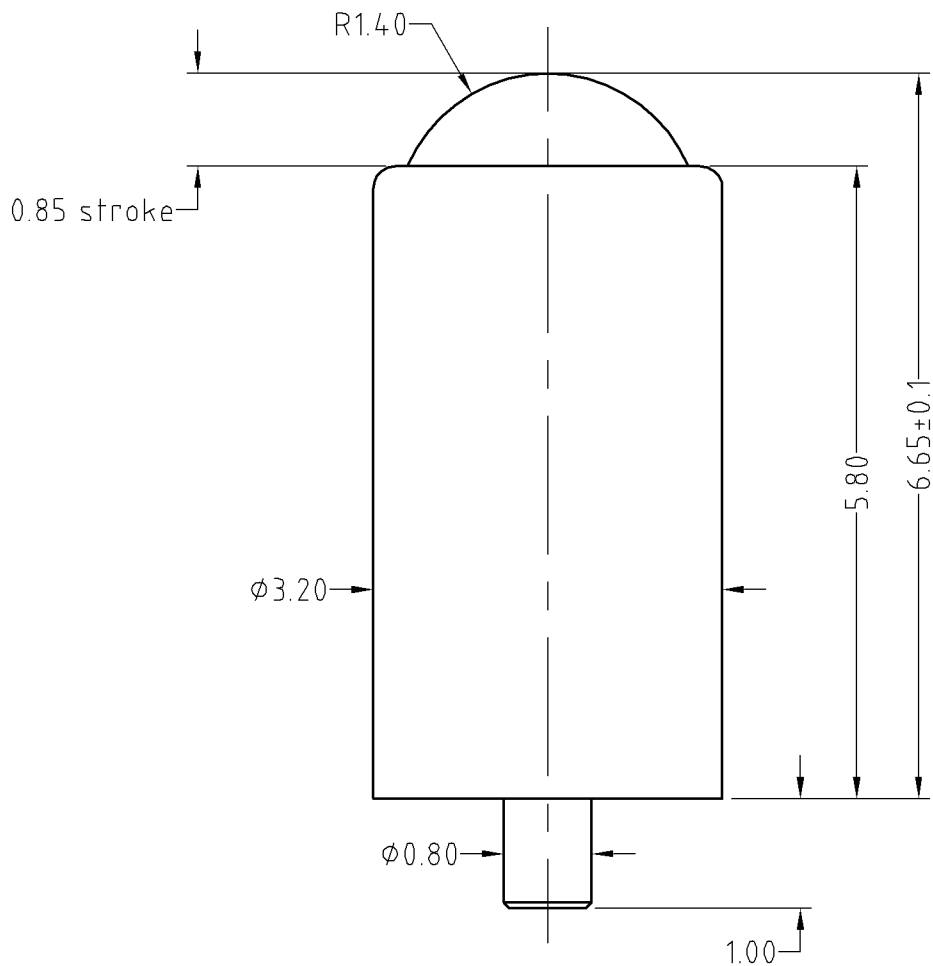
- .Contact force: 50g±20% at 0.8mm working stroke
- .Life test: 100,000 cycles (axial)

Electrical:

- .Rated current & voltage: DC 12V; 1A

To ensure the best usage, please operate it based on the working height.  
Based on the engineering drawings, shall not exceed the maximum allowed compression.

A



Approve Sign

B

C

D

ECN(DCN) NO.	REV	DATE	DESCRIPTION
	D0	2013.09.11	NEW

SCALE	10:1	UNIT:mm	THIS DOCUMENT IS THE SOLE PROPERTY OF CFE CORPORATION CO.,LTD., AND SHOULD NOT BE USED IN WHOLE OR IN PART WITHOUT PRIOR WRITTEN PERMISSION.	
ANGEL	±1°	A4	SHEET: 1 of 1	
	±0.02		PART NO.	BP10622
	±0.05	DRAW	FILE NAME	BP10611
	±0.10	CHECK	TITLE	Pogo pin connector
GENERAL TOLERANCE UNLESS OTHERWISE NOTED		APPRO		

**CFE** 东莞市川富电子有限公司  
CFE CORPORATION CO.,LTD.