

HSF 禁止使用1级环境管理物质

To ensure the best usage, please operate it based on the working height.
Based on the engineering drawings, shall not exceed the maximum allowed compression.

Approve Sign

Note:

Materials:

.Plunger: Brass 20u" Au over Ni

.Barrel: Brass 15u" Au over Ni

.Spring: SUS

Mechanical:

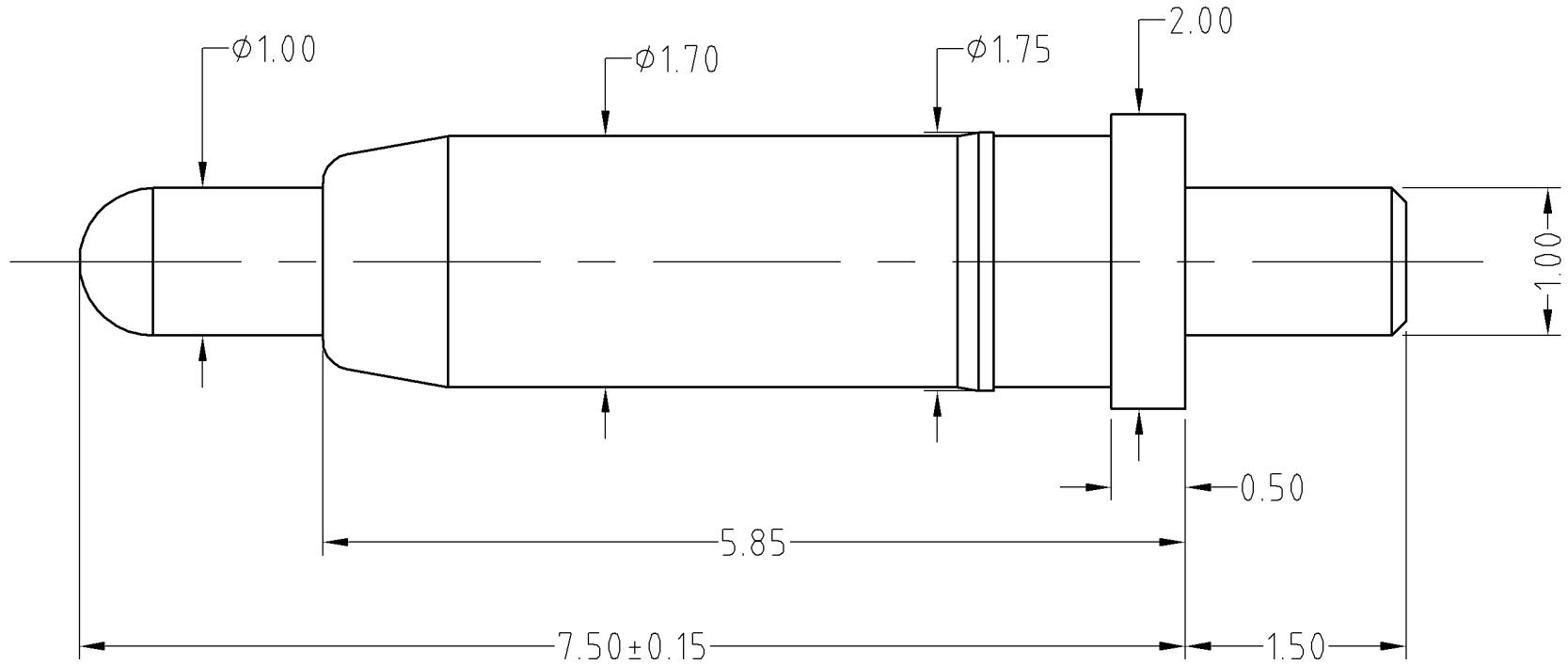
.Contact force: 80g±20g at 1.0mm working stroke

.Life test: 20,000 cycles

Electrical:

.Rated current & voltage: DC 12V; 3A

.Contact resistance: 50 milliohm Max.



SCALE	10:1	UNIT:mm	THIS DOCUMENT IS THE SOLE PROPERTY OF CFE CORPORATION CO.,LTD., AND SHOULD NOT BE USED IN WHOLE OR IN PART WITHOUT PRIOR WRITTEN PERMISSION.	
ANGEL	$\pm 1^\circ$	A4	SHEET: 1 of 1	
	± 0.02			
	± 0.05	DRAW		
	± 0.10	CHECK		
GENERAL TOLERANCE UNLESS OTHERWISE NOTED		APPRO		
PART NO.	BP11111	FILE NAME	BP11111	
TITLE.	Pogo pin connector			

CFE 东莞市川富电子有限公司
CFE CORPORATION CO.,LTD.

ECN(DCN) NO.	REV	DATE	DESCRIPTION	CHANGE	APPRO
	D0	2012.03.06	NEW		