

HSF 禁止使用1级环境管理物质

To ensure the best usage, please operate it based on the working height.
Based on the engineering drawings, shall not exceed the maximum allowed compression.

Approve Sign

Note:

Materials:

.Plunger: Brass 10u" Au over Ni

.Barrel: Brass 10u" Au over Ni

.Spring: SUS

Mechanical:

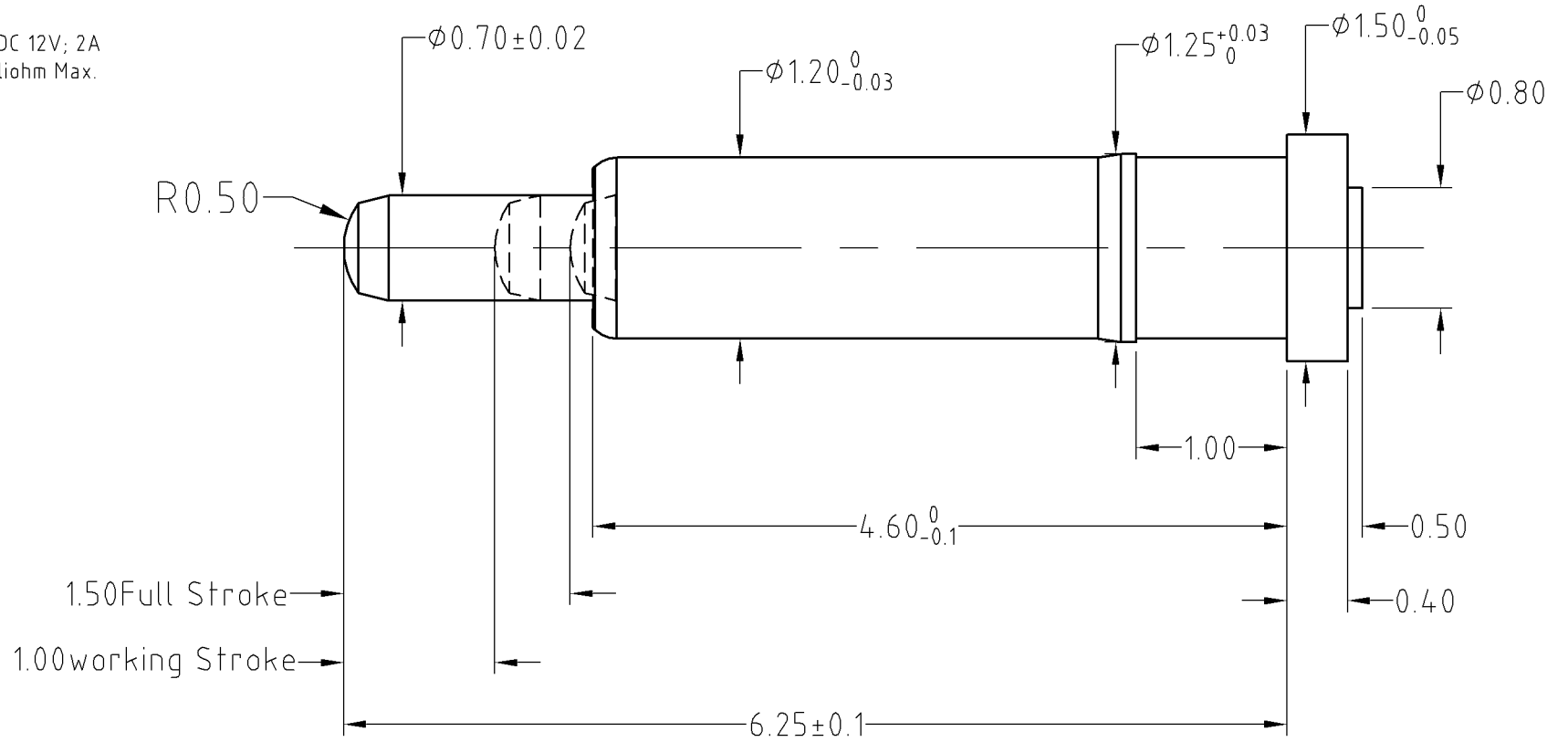
.Contact force: 60g±20g at 1.0mm working stroke

.Life test: 50,000 cycles

Electrical:

.Rated current & voltage: DC 12V; 2A

.Contact resistance: 50 milliohm Max.



| | | | | |
|--|-------|---------|--|--------------------|
| SCALE | 10:1 | UNIT:mm | THIS DOCUMENT IS THE SOLE PROPERTY OF CFE CORPORATION CO.,LTD., AND SHOULD NOT BE USED IN WHOLE OR IN PART WITHOUT PRIOR WRITTEN PERMISSION. | |
| ANGEL | ±1° | A4 | SHEET: 1 of 1 | |
| 0~6 | ±0.05 | | | |
| 6~30 | ±0.10 | DRAW | PART NO. | BP11211 |
| 30~120 | ±0.15 | CHECK | FILE NAME | BP11211 |
| GENERAL TOLERANCE UNLESS OTHERWISE NOTED | APPRO | | TITLE. | Pogo pin connector |

CFE 东莞市川富电子有限公司
CFE CORPORATION CO.,LTD.

| | | | | | |
|--------------|-----|------------|-------------|--------|-------|
| ECN(DCN) NO. | REV | DATE | DESCRIPTION | CHANGE | APPRO |
| | D0 | 2013.09.24 | NEW | | |