

Note:

Materials:

- .Housing: Black PA46 U194 V-0
- .Plunger: Brass 10u" Au over 50~100u" Ni
- .Barrel: Brass 4u" Au over 50~100u" Ni
- .Spring: SUS

Mechanical:

- .Contact force: 40g±20g at 12.55mm working height
- .Full stroke: 2.0mm
- .Life test: 20,000 cycles

Electrical:

- .Rated current & voltage: DC 12V; 2A Max.
- .Contact resistance: 30 milliohm Max.

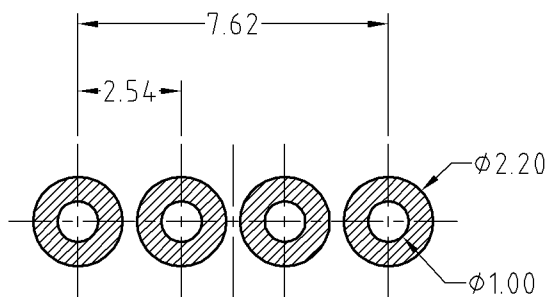
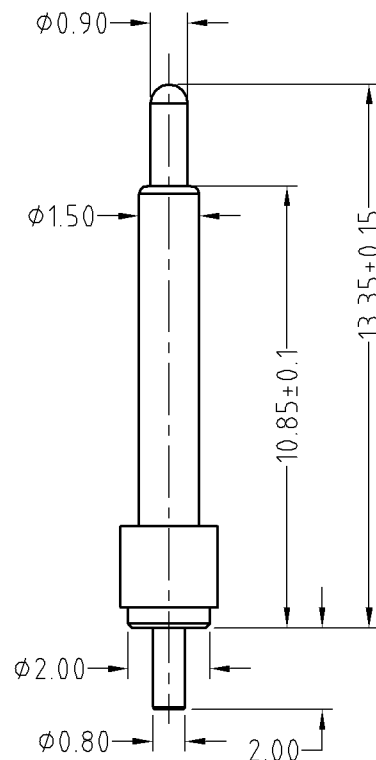
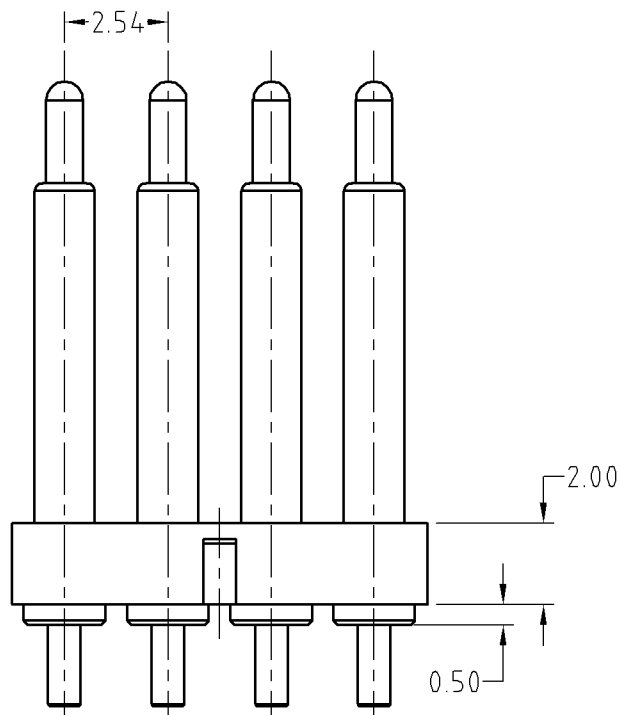
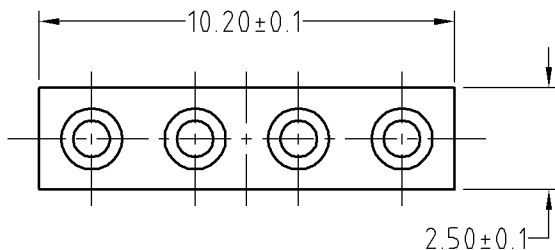
Storage and operating temp.: -40°C~85°C

Humidity range: 10% RH~90% RH

Salt spray: 48H

To ensure the best usage, please operate it based on the working height.
Based on the engineering drawings, shall not exceed the maximum allowed compression.

Approve Sign



Recommended pcb layout
layout tolerance: ±0.05mm



SCALE	10:1	UNIT:mm	THIS DOCUMENT IS THE SOLE PROPERTY OF CFE CORPORATION CO.,LTD., AND SHOULD NOT BE USED IN WHOLE OR IN PART WITHOUT PRIOR WRITTEN PERMISSION.	CFE 东莞市川富电子有限公司 CFE CORPORATION CO.,LTD.	
ANGEL	±1°	A4			
0~6	±0.05				SHEET: 1 of 1
6~30	±0.10	DRAW			PART NO. BP12911-04254H0A
30~150	±0.15	CHECK	FILE NAME BP12911	TITLE. Pogo pin connector	
GENERAL TOLERANCE UNLESS OTHERWISE NOTED		APPRO			

ECN(DCN) NO.	REV	DATE	DESCRIPTION
	A1	2014.02.14	change 80g to 40g
	A0	2013.12.27	NEW