

Note:

Materials:

.Plunger: Brass 0.25um Au over Ni

.Barrel: Brass 0.25um Au over Ni

.Spring: SUS surface treatment

Mechanical:

.Contact force: 100g±20% at 2.10mm working stroke

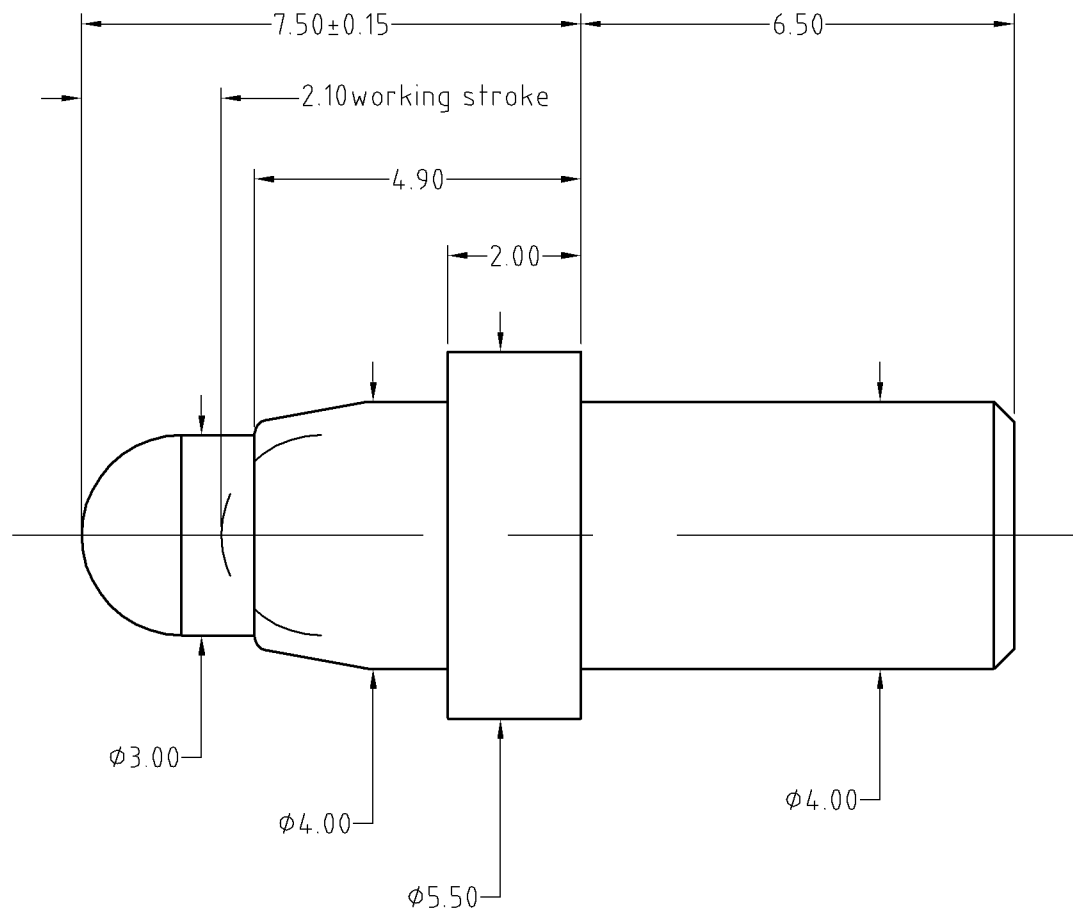
.Life test: 20,000 cycles

Electrical:

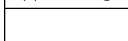
.Rated current & voltage: DC 12V; 5A

.Contact resistance: 50 milliohm Max.

To ensure the best usage, please operate it based on the working height.
Based on the engineering drawings, shall not exceed the maximum allowed compression.



Approve Sign



SCALE	10:1	UNIT:mm	THIS DOCUMENT IS THE SOLE PROPERTY OF CFE CORPORATION CO.,LTD., AND SHOULD NOT BE USED IN WHOLE OR IN PART WITHOUT PRIOR WRITTEN PERMISSION.	CFE 东莞市川富电子有限公司 CFE CORPORATION CO.,LTD.
ANGEL	±1°	A4		
0-6	±0.05		SHEET: 1 of 1	
6-30	±0.10	DRAW		PART NO. BP13112
30-150	±0.15	CHECK		FILE NAME BP131XX
GENERAL TOLERANCE UNLESS OTHERWISE NOTED		APPRO		TITLE. Pogo pin connector

_____	D0	2014.12.15	NEW
ECN(DCN) NO.	REV	DATE	DESCRIPTION