

1

2

3

4

Note:

Materials:

.Plunger: Brass 5u" Au over Ni

.Barrel: Brass 3u" Au over Ni

.Spring: SUS

Mechanical:

.Contact force: 60g±20g at 1.0mm working stroke

.Life test: 20,000 cycles

Electrical:

.Rated current &amp; voltage: DC 12V; 2A Max.

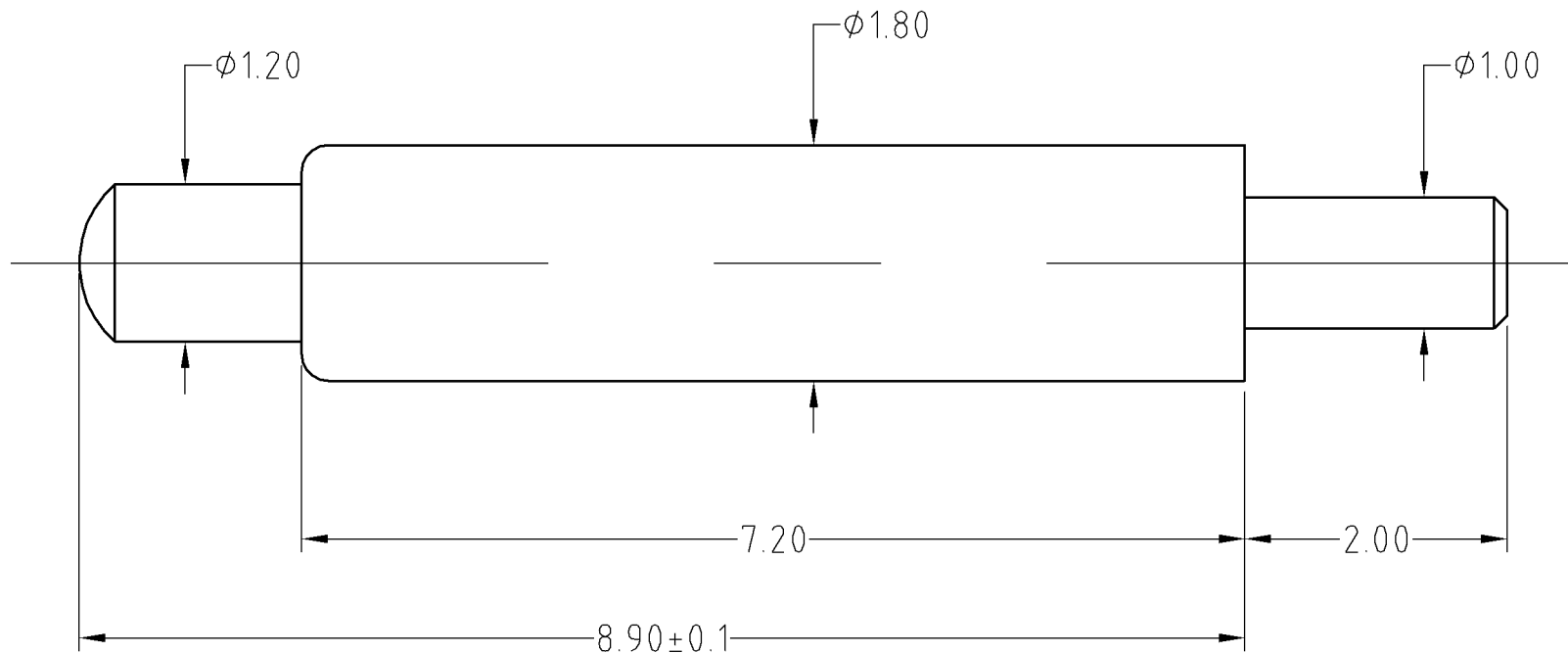
.Contact resistance: 50 milliohm Max.

To ensure the best usage, please operate it based on the working height.

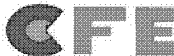
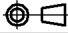
Based on the engineering drawings, shall not exceed the maximum allowed compression.



Approve Sign



BOM		
Part	NO.	Qty
Barrel	B138-B3003	1
Plunger	B138-P1005	1
Spring	B138-S01	1

SCALE	10:1	UNIT:mm	THIS DOCUMENT IS THE SOLE PROPERTY OF CFE CORPORATION CO.,LTD., AND SHOULD NOT BE USED IN WHOLE OR IN PART WITHOUT PRIOR WRITTEN PERMISSION.	 <b>东莞市川富电子有限公司</b> CFE CORPORATION CO.,LTD.	
ANGEL	±1°	A4			
0~6	±0.05		SHEET: 1 of 1	PART NO.	BP13803
6~30	±0.10	DRAW		FILE NAME	BP138XX
30~150	±0.15	CHECK		TITLE	Pogo pin connector
GENERAL TOLERANCE UNLESS OTHERWISE NOTED		APPRO			

ECN(DCN) NO.	REV	DATE	DESCRIPTION
	A0	2015.06.15	NEW