

1

2

3

4

Note:

Materials:

.Plunger: Brass 20u" Au over Ni

.Barrel: Brass 20u" Au over Ni

.Spring: SUS

Mechanical:

.Contact force: 90g±20g at 0.7mm working stroke

.Full stroke: 1.4mm stroke

.Life test: 50,000 cycles

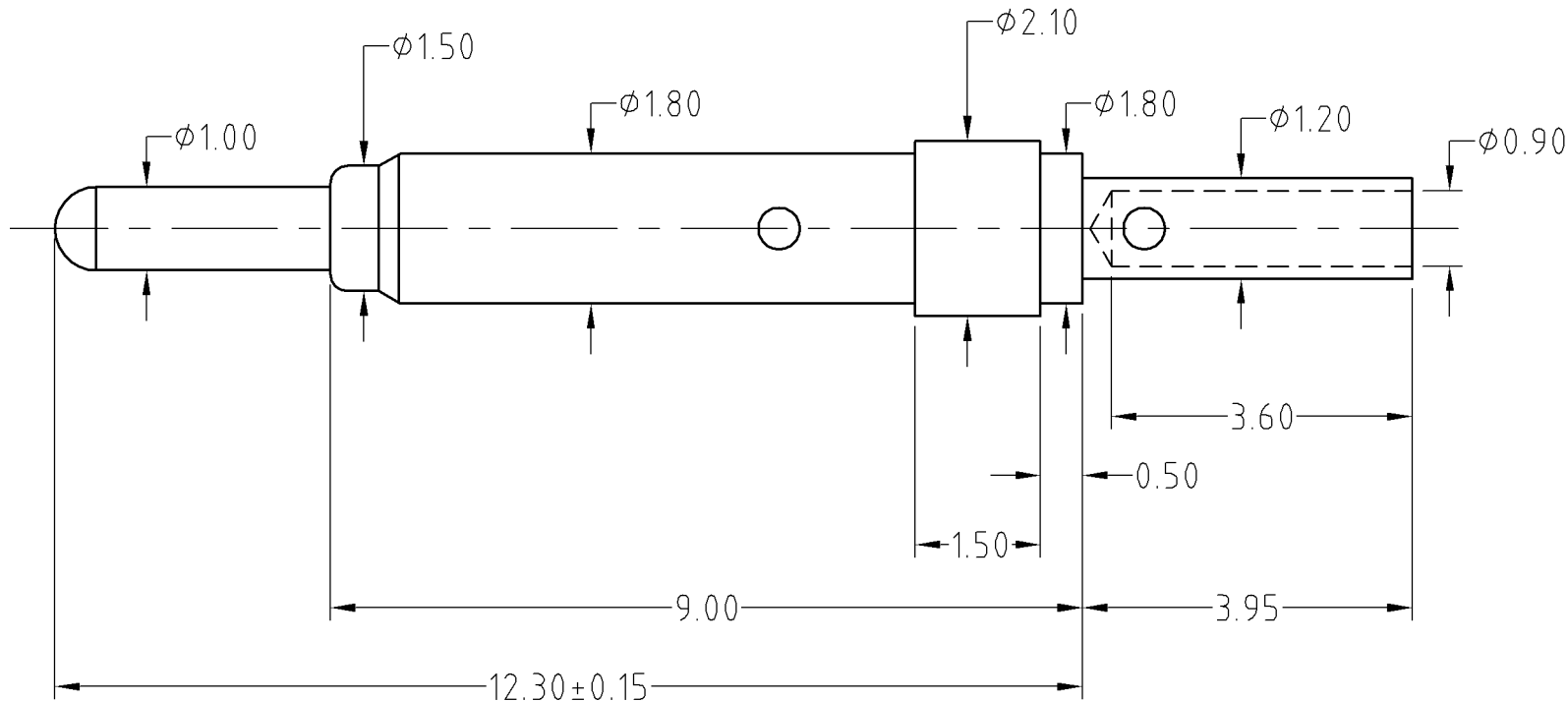
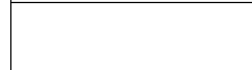
Electrical:

.Rated current & voltage: DC 12V; 3A Max.

.Contact resistance: 30 milliohm Max.

To ensure the best usage, please operate it based on the working height.  
Based on the engineering drawings, shall not exceed the maximum allowed compression.

Approve Sign



SCALE	10:1	UNIT:mm	THIS DOCUMENT IS THE SOLE PROPERTY OF CFE CORPORATION CO.,LTD., AND SHOULD NOT BE USED IN WHOLE OR IN PART WITHOUT PRIOR WRITTEN PERMISSION.	
ANGEL	±1°	A4	SHEET: 1 of 1	
0~6	±0.05		PART NO. BP14711	
6~30	±0.10	DRAW	FILE NAME BP147XX	
30~150	±0.15	CHECK	TITLE. Pogo pin connector	
GENERAL TOLERANCE UNLESS OTHERWISE NOTED		APPRO		



ECN(DCN) NO.	D0	2013.05.30	NEW
REV	DATE	DESCRIPTION	