

1

2

3

4

Note:

Materials:

.Plunger: brass 100u" Min. Ni

.Barrel: brass 100u" Min. Ni

.Spring: SUS

Mechanical:

.Contact force: 180g±20% at 1.5mm working stroke

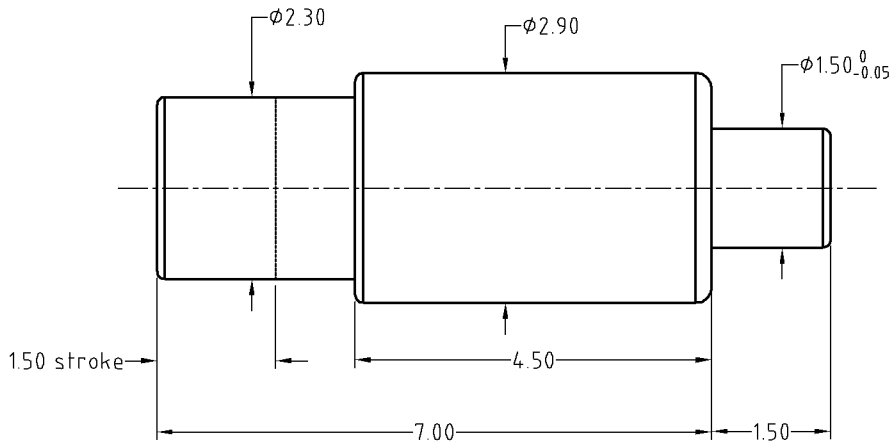
Environment:

.Salt fog Test: 8 hours

To ensure the best usage, please operate it based on the working height.
Based on the engineering drawings, shall not exceed the maximum allowed compression.



Approve Sign



SCALE	10:1	UNIT-mm	THIS DOCUMENT IS THE SOLE PROPERTY OF CFE CORPORATION CO.,LTD. AND SHOULD NOT BE USED IN WHOLE OR IN PART WITHOUT PRIOR WRITTEN PERMISSION.
ANGLE	±1°	A4	
0~6	±0.05		
6~30	±0.10	DRAW	
30~150	±0.15	CHECK	
GENERAL TOLERANCE UNLESS OTHERWISE NOTED			APPRO

CFE 东莞市川富电子有限公司
CFE CORPORATION CO.,LTD.

ECN/CN/NO.	REV	DATE	DESCRIPTION
		2013.02.20	NEW

PART NO.	BP14901
FILE NAME	BP14901
TITLE.	Paga pin connector