

1

2

3

4

Note:

Materials:

.Plunger: Brass 100u" Ni

.Barrel: Brass 100u" Ni

.Spring:

Mechanical:

.Contact force: 220g±20% at 1.5mm working stroke

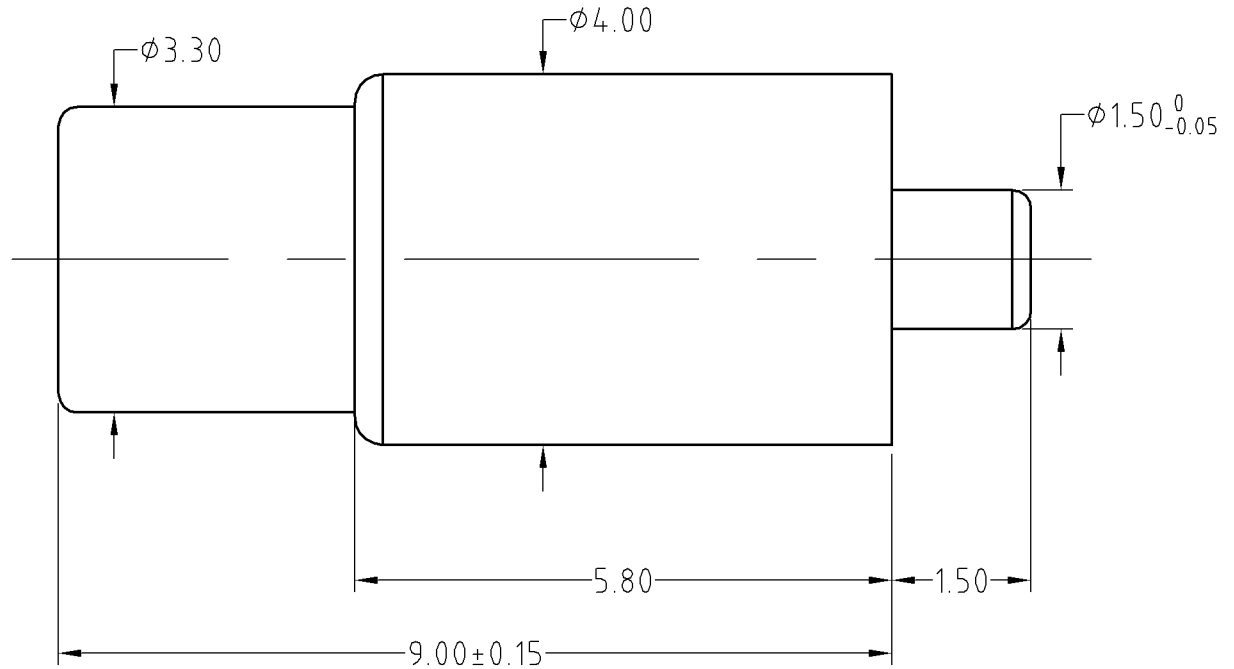
.Life test: 20,000 cycles

salt fog: 8 hours

To ensure the best usage, please operate it based on the working height.  
Based on the engineering drawings, shall not exceed the maximum allowed compression.



Approve Sign



SCALE	10:1	UNIT:mm	THIS DOCUMENT IS THE SOLE PROPERTY OF CFE CORPORATION CO.,LTD., AND SHOULD NOT BE USED IN WHOLE OR IN PART WITHOUT PRIOR WRITTEN PERMISSION.	
ANGEL	$\pm 1^\circ$	A4	SHEET: 1 of 1	
0~6	$\pm 0.05$		PART NO. BP17011	
6~30	$\pm 0.10$	DRAW	FILE NAME BP170XX	
30~150	$\pm 0.15$	CHECK	TITLE. Pogo pin connector	
GENERAL TOLERANCE UNLESS OTHERWISE NOTED		APPRO		



_____	D0	2013.05.30	NEW
ECN(DCN) NO.	REV	DATE	DESCRIPTION