

1

2

3

4

Note:

Materials:

.Plunger: Brass Ni

.Barrel: Brass Ni

.Spring: SUS

Mechanical:

.Contact force: 160g±20% at 1.4mm working stroke

.Life test: 20,000 cycles

Electrical:

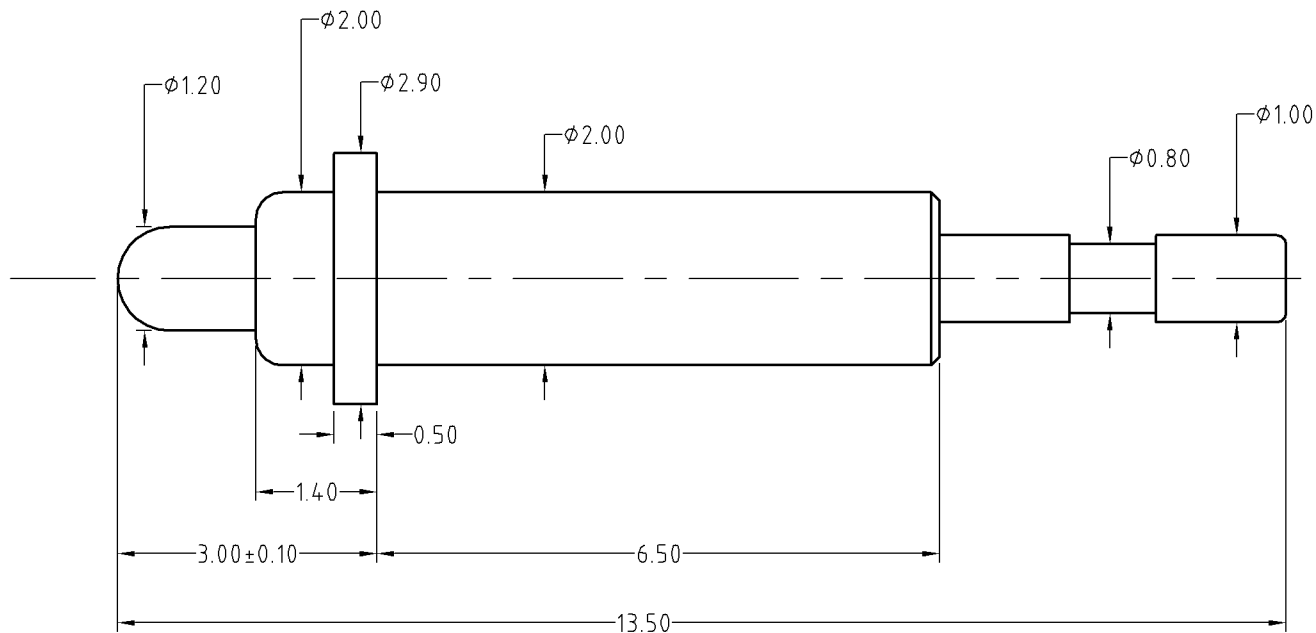
.Rated current & voltage: DC 12V; 1A

Pb<100ppm

To ensure the best usage, please operate it based on the working height.
Based on the engineering drawings, shall not exceed the maximum allowed compression.



Approve Sign



BOM

Part	NO.	Qty
Barrel	B175-B1120	1
Spring	B175-S1000	1
Plunger	B175-P1120	1

SCALE	10:1	UNIT:mm	THIS DOCUMENT IS THE SOLE PROPERTY OF CFE CORPORATION CO.,LTD., AND SHOULD NOT BE USED IN WHOLE OR IN PART WITHOUT PRIOR WRITTEN PERMISSION.	
ANGEL	±1°	A4	SHEET: 1 of 1	
0~6	±0.05		PART NO.	BP17511
6~30	±0.10	DRAW	FILE NAME	BP175XX
30~150	±0.15	CHECK	TITLE	Pogo pin connector
GENERAL TOLERANCE UNLESS OTHERWISE NOTED		APPRO		

CFE 东莞市川富电子有限公司
CFE CORPORATION CO.,LTD.

ECN(DCN) NO.	REV	DATE	DESCRIPTION
	D0	2013.05.30	NEW