

1

2

3

4

Note:

Materials:

.Plunger: Brass 100u" Ni

.Barrel: Brass 100u" Ni

.Spring: SUS surface treatment

Mechanical:

.Contact force: 100g±20% at 1.3mm working stroke

.Full stroke: 2.0mm

.Life test: 25,000 cycles

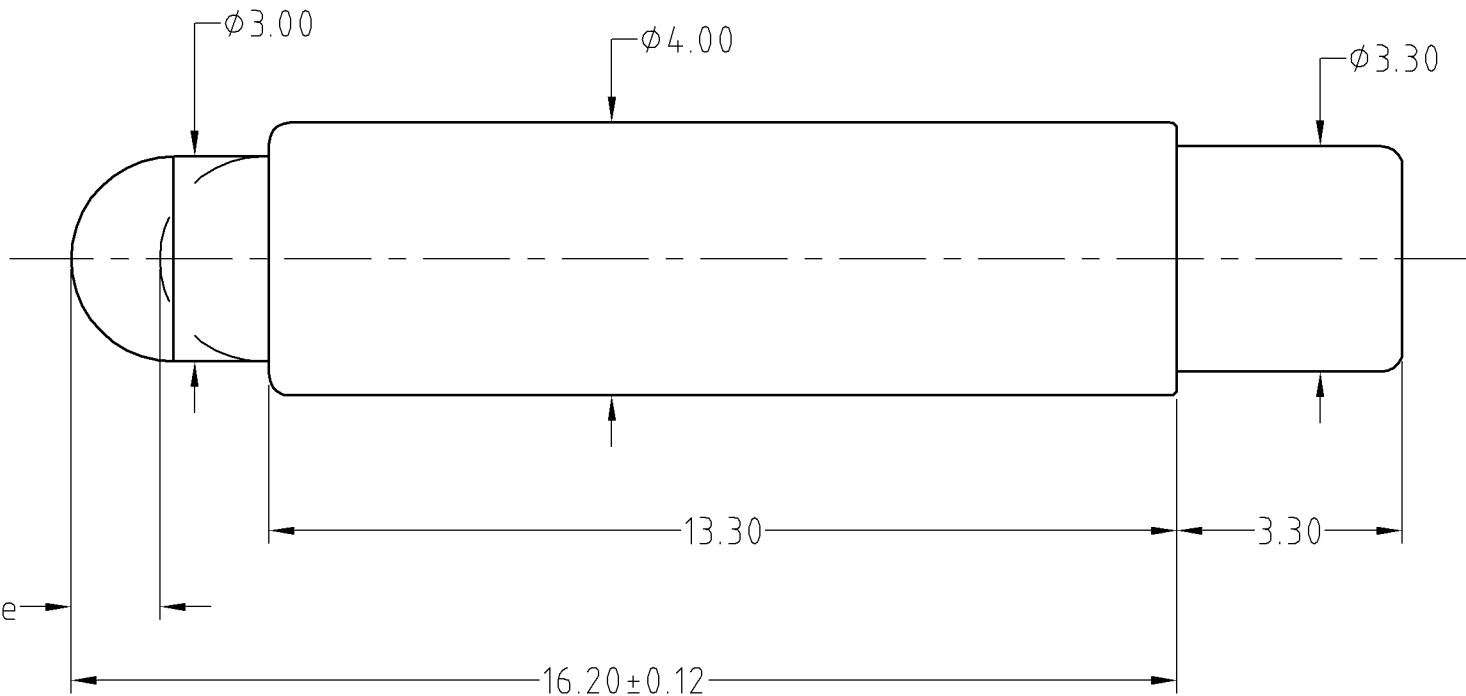
Electrical:

.Rated current & voltage: DC 12V; 1A

To ensure the best usage, please operate it based on the working height.
Based on the engineering drawings, shall not exceed the maximum allowed compression.



Approve Sign



| BOM | | |
|---------|------------|-----|
| Part | NO. | Qty |
| Plunger | B176-P1100 | 1 |
| Barrel | B176-B1100 | 1 |
| Spring | B176-S1000 | 1 |

| | | | |
|--------------|-----|------------|-------------|
| _____ | D0 | 2013.05.30 | NEW |
| ECN(DCN) NO. | REV | DATE | DESCRIPTION |

| | | | | | | |
|--|-------|---------|--|--|---------------|---------|
| SCALE | 10:1 | UNIT:mm | THIS DOCUMENT IS THE SOLE PROPERTY OF CFE CORPORATION CO.,LTD., AND SHOULD NOT BE USED IN WHOLE OR IN PART WITHOUT PRIOR WRITTEN PERMISSION. | 东莞市川富电子有限公司 CFE CORPORATION CO.,LTD. | | |
| ANGEL | ±1° | A4 | | | | |
| 0~6 | ±0.05 | | | | SHEET: 1 of 1 | |
| 6~30 | ±0.10 | DRAW | | | PART NO. | BP17611 |
| 30~150 | ±0.15 | CHECK | | | FILE NAME | BP176XX |
| GENERAL TOLERANCE UNLESS OTHERWISE NOTED | | APPRO | TITLE. | Pogo pin connector | | |