

1

2

3

4

Note:

Materials:

- .Bead: SUS 50u" Au over 50u" Ni
- .Barrel: Brass 5u" Au over 50u" Ni
- .Spring: SUS

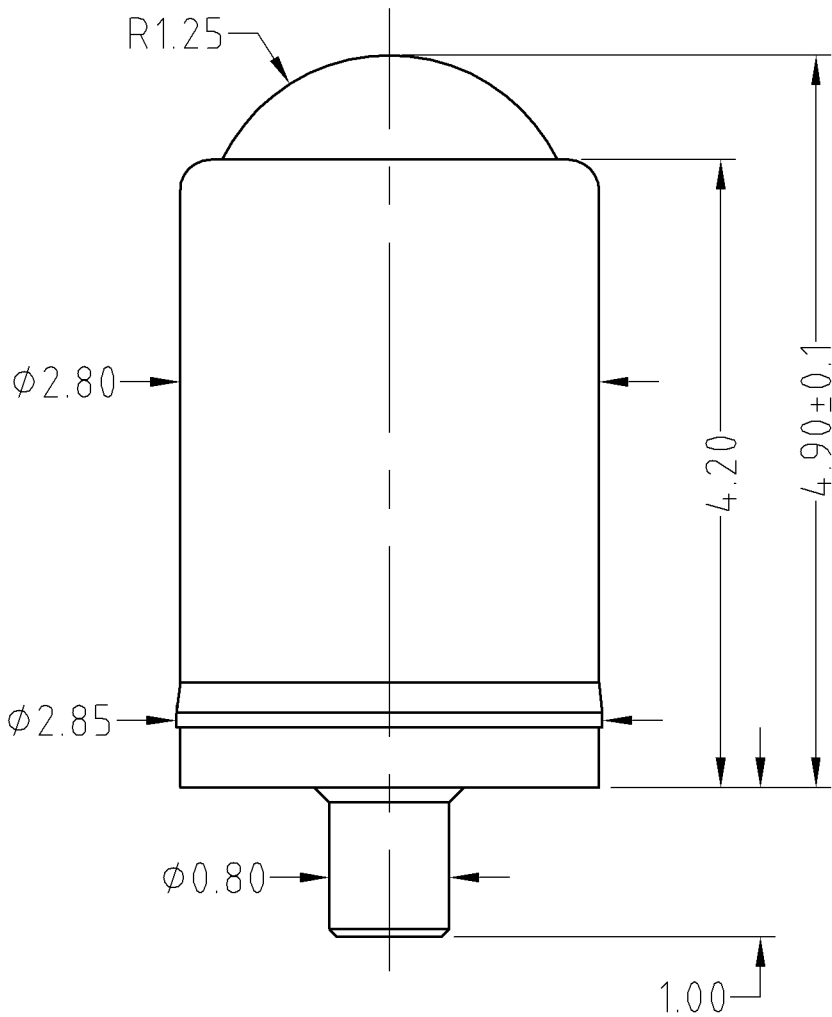
Mechanical:

- .Contact force: 50g±20% at 0.7mm working stroke
- .Life test: 100,000 cycles (axial)

Electrical:

- .Rated current & voltage: DC 12V; 1A

To ensure the best usage, please operate it based on the working height.
Based on the engineering drawings, shall not exceed the maximum allowed compression.



Approve Sign

--

SCALE	10:1	UNIT:mm	THIS DOCUMENT IS THE SOLE PROPERTY OF CFE CORPORATION CO.,LTD., AND SHOULD NOT BE USED IN WHOLE OR IN PART WITHOUT PRIOR WRITTEN PERMISSION.	
ANGEL	±1°	A4	SHEET: 1 of 1	
0-6	±0.05			
6-30	±0.10	DRAW	PART NO.	BP18001
30-150	±0.15	CHECK	FILE NAME	BP180XX
GENERAL TOLERANCE UNLESS OTHERWISE NOTED		APPRO	TITLE	Pagoda pin connector



	D0	2013.05.30	NEW
ECN(DCN) NO.	REV	DATE	DESCRIPTION