

1

2

3

4

Note:

Materials:

.Plunger: Brass 0.5um Au over Ni

.Barrel: Brass 0.5um Au over Ni

.Spring: SUS surface treatment

Mechanical:

.Contact force: 120g±20% at 1.0mm working stroke

.Full stroke: 1.5mm

.Life test: 20,000 cycles

Electrical:

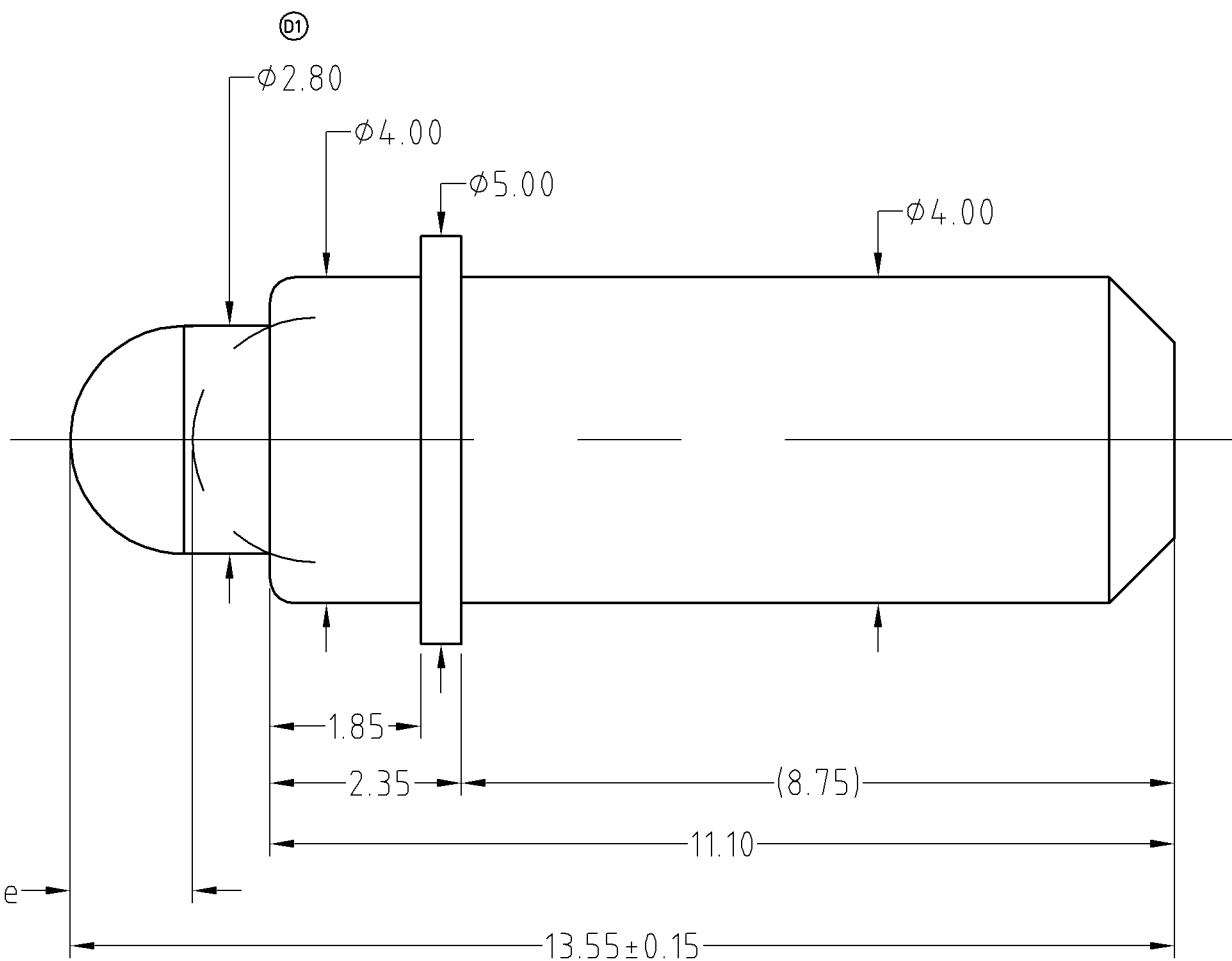
.Rated current &amp; voltage: DC 24V; 8.0A

.Contact resistance: 50 milliohm Max.

To ensure the best usage, please operate it based on the working height.  
Based on the engineering drawings, shall not exceed the maximum allowed compression.



Approve Sign



1.50 Full stroke

SCALE	10:1	UNIT:mm	THIS DOCUMENT IS THE SOLE PROPERTY OF CFE CORPORATION CO.,LTD., AND SHOULD NOT BE USED IN WHOLE OR IN PART WITHOUT PRIOR WRITTEN PERMISSION.	
ANGEL	$\pm 1^\circ$	A4	SHEET: 1 of 1	
0~6	$\pm 0.05$		PART NO. BP18102	
6~30	$\pm 0.10$	DRAW	FILE NAME BP181XX	
30~150	$\pm 0.15$	CHECK	TITLE. Pogo pin connector	
GENERAL TOLERANCE UNLESS OTHERWISE NOTED		APPRO		

**CFE** 东莞市川富电子有限公司  
CFE CORPORATION CO.,LTD.

	D1	2015.04.25	修改针轴外径尺寸
	A0	2014.11.18	NEW
ECN(DCN) NO.	REV	DATE	DESCRIPTION