

1

2

3

4

Note:

Materials:

.Plunger: Brass15u" Au over Ni

.Barrel: Brass 15u" Au over Ni

.Spring: SUS

.Bead: Ceramic bead

A Mechanical:

.Contact force: 60g±15g at 0.7mm working stroke

.Life test: 20,000 cycles

Electrical:

.Rated current & voltage: DC 12V; 5A

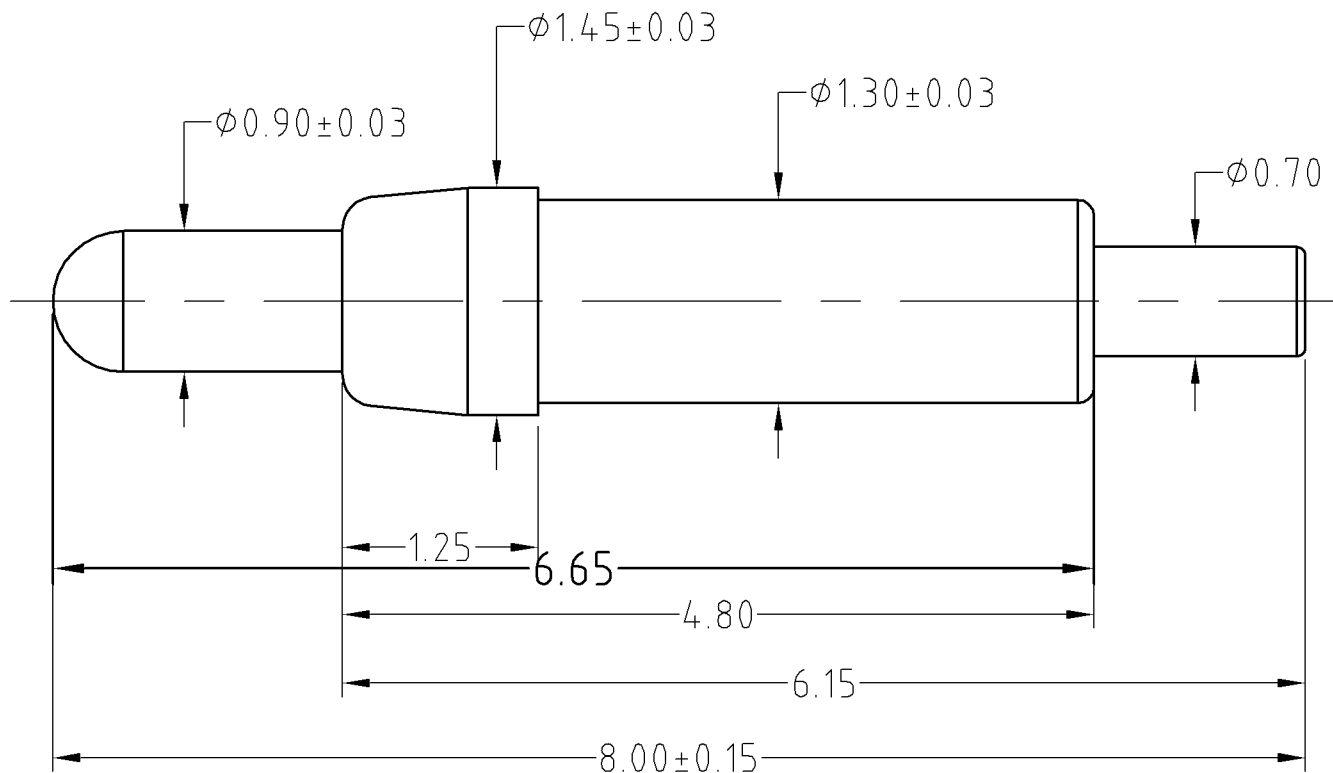
.Contact resistance: 50 milliohm Max.

To ensure the best usage, please operate it based on the working height.

Based on the engineering drawings, shall not exceed the maximum allowed compression.



Approve Sign



SCALE	10:1	UNIT:mm	THIS DOCUMENT IS THE SOLE PROPERTY OF CFE CORPORATION CO.,LTD., AND SHOULD NOT BE USED IN WHOLE OR IN PART WITHOUT PRIOR WRITTEN PERMISSION.	
ANGEL	$\pm 1^\circ$	A4	SHEET: 1 of 1	
0~6	± 0.05		PART NO.	BP18201
6~30	± 0.10	DRAW	FILE NAME	BP182XX
30~150	± 0.15	CHECK	TITLE	Pogo pin connector
GENERAL TOLERANCE UNLESS OTHERWISE NOTED		APPRO		

CFE 东莞市川富电子有限公司
CFE CORPORATION CO.,LTD.

_____	D0	2013.05.30	NEW
ECN(DCN) NO.	REV	DATE	DESCRIPTION