

1

2

3

4

Note:

Materials:

.Plunger: Brass15u" Au over Ni

.Barrel: Brass 15u" Au over Ni

.Spring: SUS

.Bead: Ceramic bead

A Mechanical:

.Contact force: 60g±15g at 0.7mm working stroke

.Life test: 20,000 cycles

Electrical:

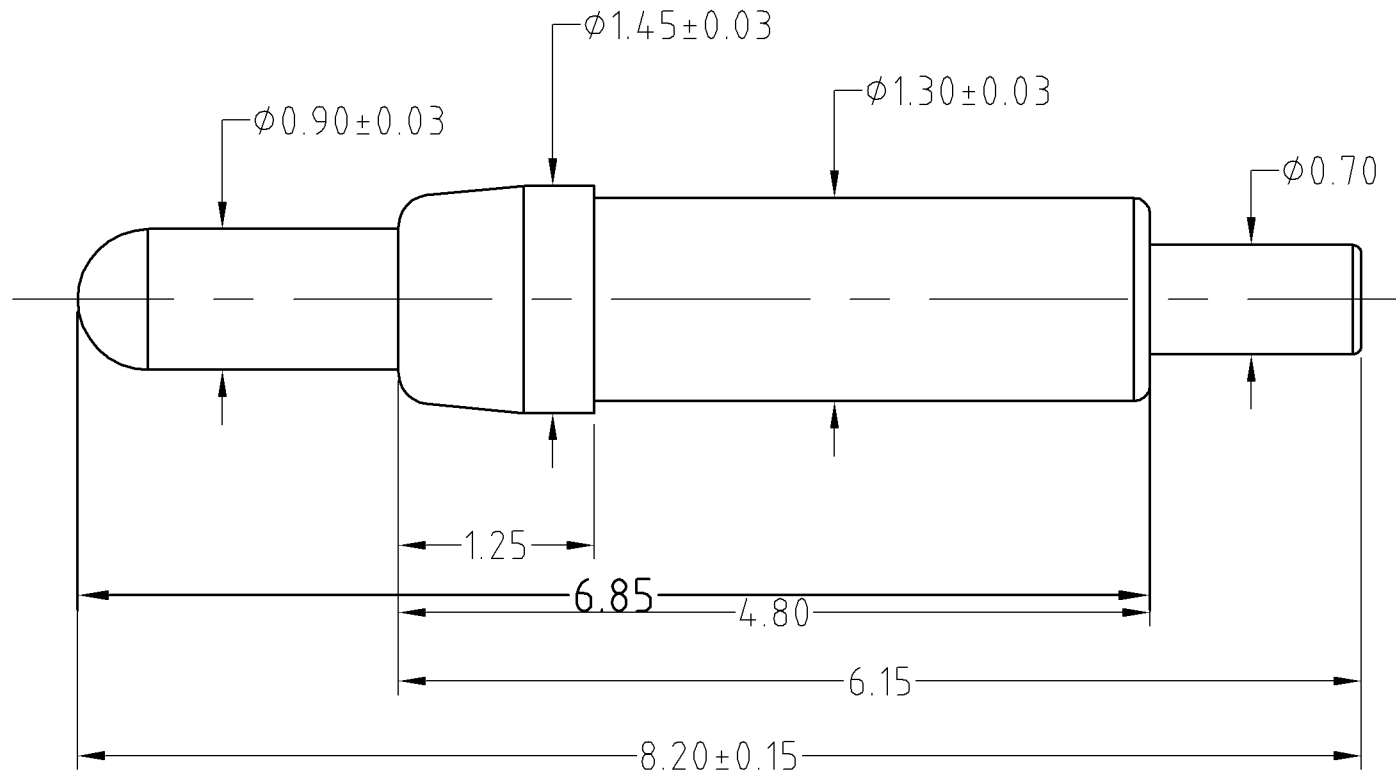
.Rated current & voltage: DC 12V; 5A

.Contact resistance: 50 milliohm Max.

To ensure the best usage, please operate it based on the working height.  
Based on the engineering drawings, shall not exceed the maximum allowed compression.



Approve Sign



B

C

D

SCALE	10:1	UNIT:mm	THIS DOCUMENT IS THE SOLE PROPERTY OF CFE CORPORATION CO.,LTD., AND SHOULD NOT BE USED IN WHOLE OR IN PART WITHOUT PRIOR WRITTEN PERMISSION.	
ANGEL	±1°	A4	SHEET: 1 of 1	
0~6	±0.05		PART NO. BP18202	
6~30	±0.10	DRAW	FILE NAME BP182XX	
30~150	±0.15	CHECK	TITLE. Pogo pin connector	
GENERAL TOLERANCE UNLESS OTHERWISE NOTED		APPRO		



_____	D0	2013.05.30	NEW
ECN(DCN) NO.	REV	DATE	DESCRIPTION