

1

2

3

4

Note:

Materials:

- .Plunger: Brass 3u" Au over Ni
- .Barrel: Brass 3u" Au over Ni
- .Spring: SWP surface treatment

Mechanical:

- .Contact force: 150g±20% at 2.8mm working stroke
- .Life test: 20,000 cycles

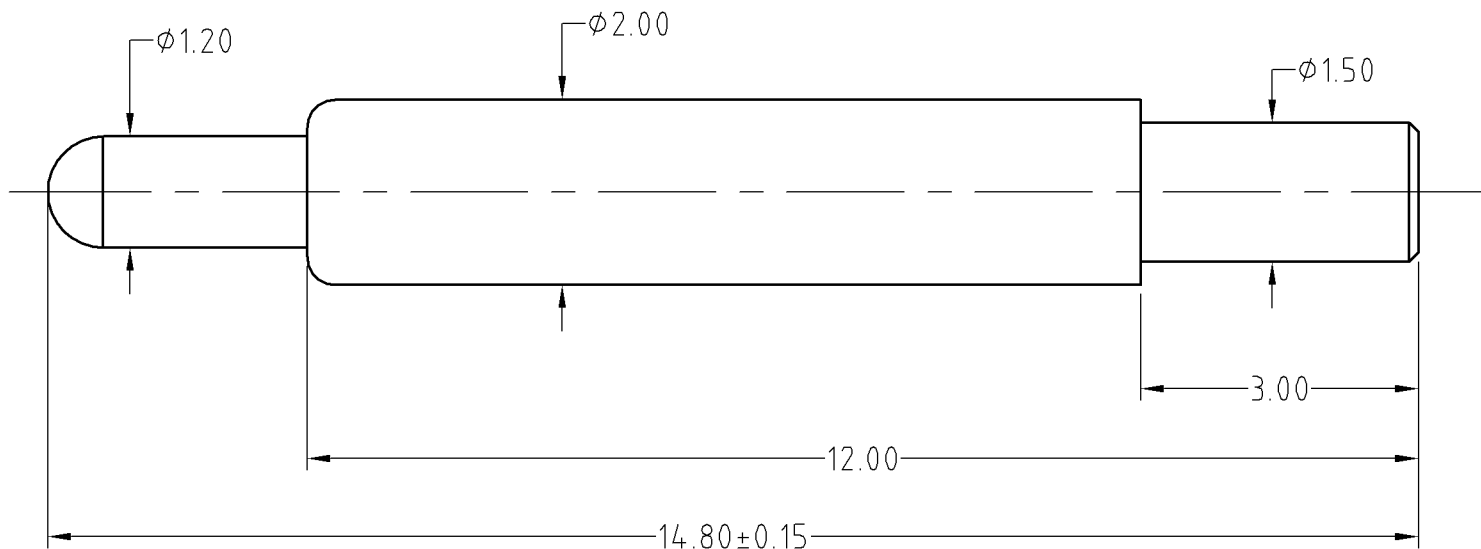
Electrical:

- .Rated current & voltage: DC 12V; 1A
- .Contact resistance: 50 milliohm Max.

To ensure the best usage, please operate it based on the working height.
Based on the engineering drawings, shall not exceed the maximum allowed compression.



Approve Sign



	D0	2013.05.30	NEW
ECN(DCN) NO.	REV	DATE	DESCRIPTION

SCALE	10:1	UNIT:mm	THIS DOCUMENT IS THE SOLE PROPERTY OF CFE CORPORATION CO.,LTD., AND SHOULD NOT BE USED IN WHOLE OR IN PART WITHOUT PRIOR WRITTEN PERMISSION.		东莞市川富电子有限公司 CFE CORPORATION CO.,LTD.	
ANGEL	±1°	A4	SHEET: 1 of 1			
0~6	±0.05				PART NO.	BP19022
6~30	±0.10	DRAW			FILE NAME	BP190XX
30~150	±0.15	CHECK			TITLE.	Pogo pin connector
GENERAL TOLERANCE UNLESS OTHERWISE NOTED		APPRO				