

1

2

3

4

Note:

Materials:

.Plunger: Brass 5u" Au over Ni

.Barrel: Brass 5u" Au over Ni

.Spring: SUS surface treatment

Mechanical:

.Contact force: 150g±20% at 2.0mm working stroke

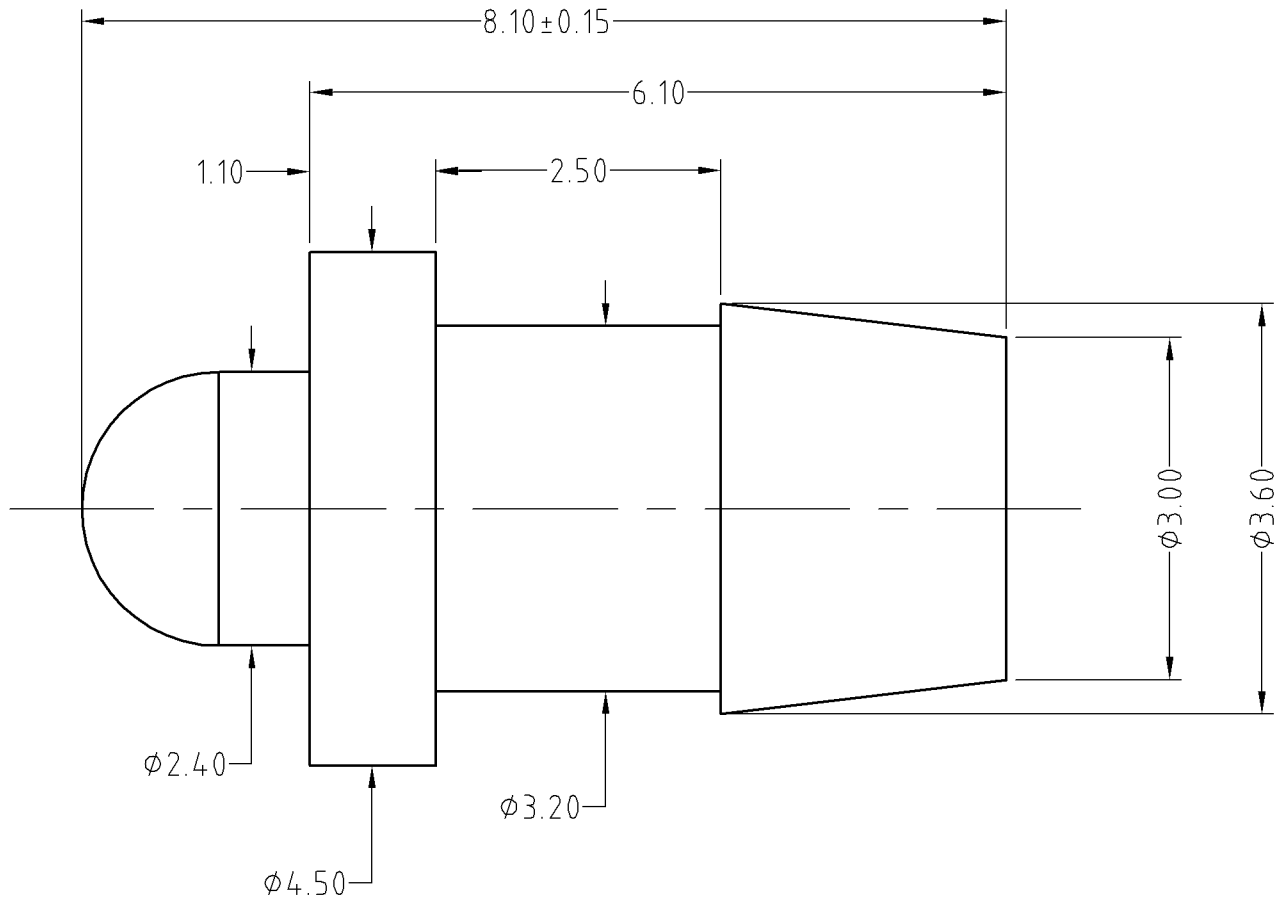
.Life test: 20,000 cycles

Electrical:

.Rated current & voltage: DC 5V; 3A

.Contact resistance: 50 milliohm Max.

To ensure the best usage, please operate it based on the working height.  
Based on the engineering drawings, shall not exceed the maximum allowed compression.



Approve Sign

--

SCALE	10:1	UNIT:mm	THIS DOCUMENT IS THE SOLE PROPERTY OF CFE CORPORATION CO.,LTD., AND SHOULD NOT BE USED IN WHOLE OR IN PART WITHOUT PRIOR WRITTEN PERMISSION.	
ANGEL	±1°	A4	SHEET: 1 of 1	
0~6	±0.05		PART NO. BP19601	
6~30	±0.10	DRAW	FILE NAME BP196XX	
30~150	±0.15	CHECK	TITLE. Pogo pin connector	
GENERAL TOLERANCE UNLESS OTHERWISE NOTED		APPRO		



_____	D0	2013.05.30	NEW
ECN(DCN) NO.	REV	DATE	DESCRIPTION