

Note:

Materials:

- .Plunger: Brass 0.125um Au over Ni
- .Barrel: Brass 0.125um Au over Ni
- .Spring: SUS surface treatment

Mechanical:

- .Contact force: 40g±20g at 0.6mm working stroke
- .Life test: 20,000 cycles

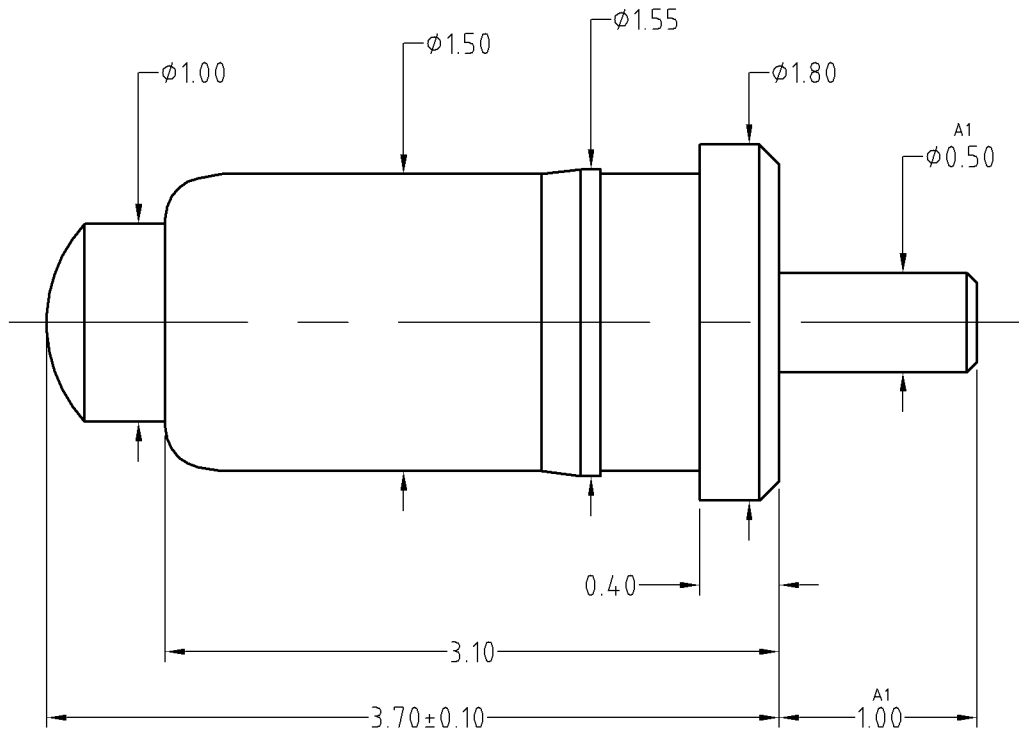
Electrical:

- .Rated current & voltage: DC 12V; 1A
- .Contact resistance: 50 milliohm Max.

To ensure the best usage, please operate it based on the working height.
Based on the engineering drawings, shall not exceed the maximum allowed compression.



Approve Sign



SCALE	10:1	UNIT:mm	THIS DOCUMENT IS THE SOLE PROPERTY OF CFE CORPORATION CO.,LTD., AND SHOULD NOT BE USED IN WHOLE OR IN PART WITHOUT PRIOR WRITTEN PERMISSION.	
ANGEL	±1°	A4	SHEET: 1 of 1	
0~6	±0.05			
6~30	±0.10	DRAW	PART NO.	BP20201
30~150	±0.15	CHECK	FILE NAME	BP202XX
GENERAL TOLERANCE UNLESS OTHERWISE NOTED		APPRO	TITLE.	Pogo pin connector



2014.110511	A1	2014.11.05	增加尾巴
_____	A0	2014.08.20	NEW
ECN(DCN) NO.	REV	DATE	DESCRIPTION