

Note:

Materials:

.Insulator: Black high temperature plastics U194 V-0

.Plunger: Brass 0.125um Au over Ni

.Barrel: Brass 0.075um Au over Ni

.Spring: SUS surface treatment

Mechanical:

.Contact force: 70g±20g at 1.0mm working stroke

.Full stroke: 1.4mm

.Life test: 50,000 cycles

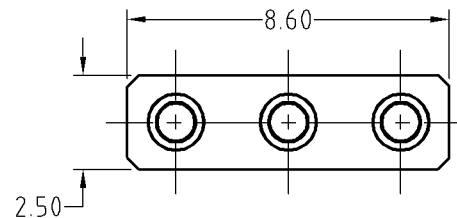
Electrical:

.Rated current & voltage: DC 12V; 2A Max.

.Contact resistance: 50 milliohm Max.

To ensure the best usage, please operate it based on the working height.  
Based on the engineering drawings, shall not exceed the maximum allowed compression.

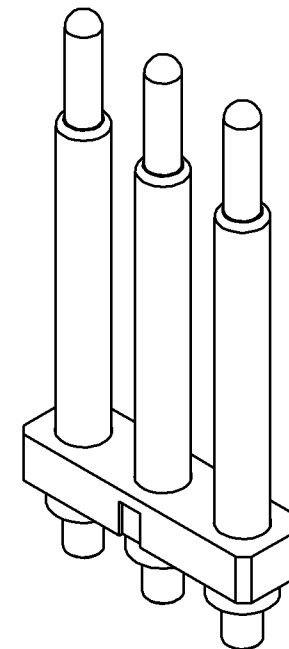
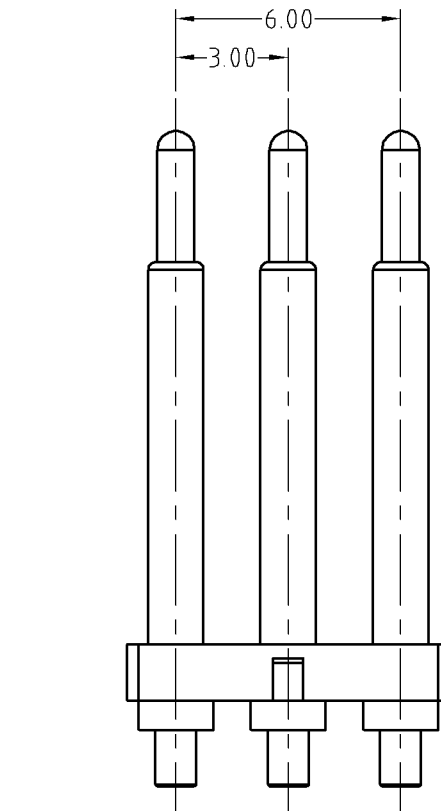
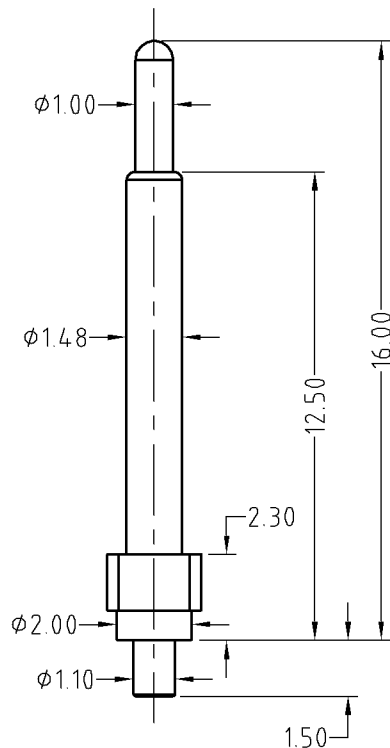
A



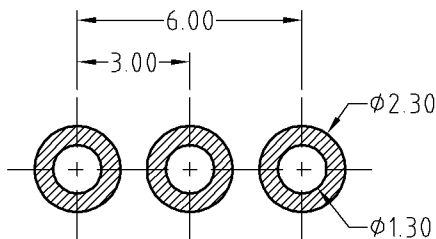
B



Approve Sign



C



Recommended pcb layout  
layout tolerance: ±0.05mm

D

SCALE	10:1	UNIT:mm	THIS DOCUMENT IS THE SOLE PROPERTY OF CFE CORPORATION CO.,LTD., AND SHOULD NOT BE USED IN WHOLE OR IN PART WITHOUT PRIOR WRITTEN PERMISSION.	<b>CFE</b> 东莞市川富电子有限公司 CFE CORPORATION CO.,LTD.	
ANGEL	±1°	A4			
0-6	±0.05		SHEET: 1 of 1	PART NO.	BP22201-03300H0A
6-30	±0.10	DRAW		FILE NAME	BP222XX
30-150	±0.15	CHECK		TITLE	Pogo pin connector
GENERAL TOLERANCE UNLESS OTHERWISE NOTED		APPRO			

ECN(DCN) NO.	D0	2013.05.30	NEW
REV	DATE	DESCRIPTION	