

1

2

3

4

Note:

Materials:

.Plunger: Brass 0.25um Au over Ni.

.Spring: SUS surface treatment

.Barrel: Brass 0.125um Au over Ni.

Mechanical:

.Contact force: 70g±20g at 1.0mm working stroke

.Full stroke: 1.40mm

.Life test: 50,000 cycles

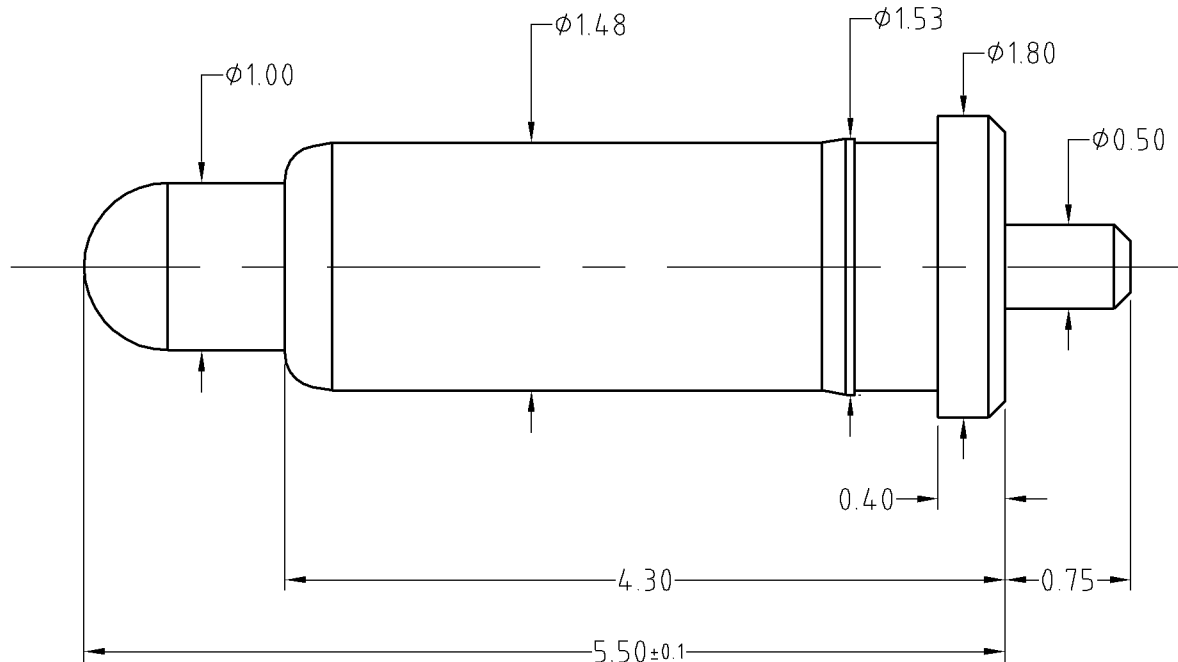
Electrical:

.Rated voltage: DC12V; 3A Max.

.Contact resistance: 50 milliohm Max.



Approve Sign



BOM		
Part	NO.	Qty
Plunger	M200-P1010	1
Barrel	B337-B1005	1
Spring	M200-S1001	1

SCALE	10:1	UNIT:mm	THIS DOCUMENT IS THE SOLE PROPERTY OF CFE CORPORATION CO.,LTD., AND SHOULD NOT BE USED IN WHOLE OR IN PART WITHOUT PRIOR WRITTEN PERMISSION.	<b>CFE</b> 东莞市川富电子有限公司 CFE CORPORATION CO.,LTD.
ANGEL	$\pm 1^\circ$	A4		
0-6	$\pm 0.05$		SHEET: 1 of 1	
6-30	$\pm 0.10$	DRAW		PART NO. BP24111
30-150	$\pm 0.15$	CHECK		FILE NAME BP241XX
GENERAL TOLERANCE UNLESS OTHERWISE NOTED		APPRO		TITLE. Pogo pin connector

_____	A0	2015.07.13	NEW
ECN(DCN) NO.	REV	DATE	DESCRIPTION