

1

2

3

4

Note:

Materials:

.Plunger: Brass 0.5um Au over Ni

.Barrel: Brass 0.5um Au over Ni

.Spring: SUS surface treatment

Mechanical:

.Contact force: 150g±20% at 2.5mm working stroke

.Full stroke: 3.5mm

.Life test: 100,000 cycles

Electrical:

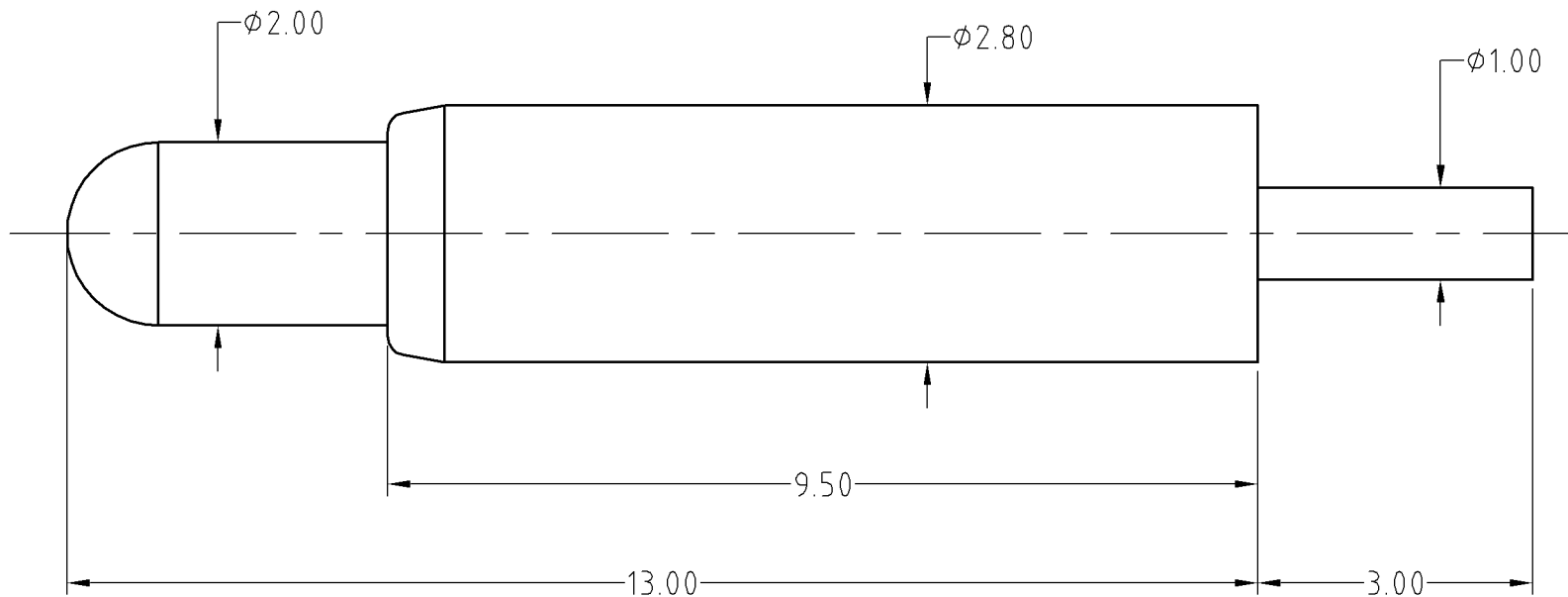
.Rated current & voltage: DC 12V; 2A Max.

.Contact resistance: 50 milliohm Max.

To ensure the best usage, please operate it based on the working height.  
Based on the engineering drawings, shall not exceed the maximum allowed compression.



Approve Sign



BOM		
Part	NO.	Qty
Plunger	B242-P1020	1
Barrel	B242-B1020	1
Spring	B242-S1001	1

SCALE	10:1	UNIT:mm	THIS DOCUMENT IS THE SOLE PROPERTY OF CFE CORPORATION CO.,LTD., AND SHOULD NOT BE USED IN WHOLE OR IN PART WITHOUT PRIOR WRITTEN PERMISSION.	<b>东莞市川富电子有限公司</b> CFE CORPORATION CO.,LTD.	
ANGEL	$\pm 1^\circ$	A4			
0-6	$\pm 0.05$				SHEET: 1 of 1
6-30	$\pm 0.10$	DRAW			PART NO.
30-150	$\pm 0.15$	CHECK	FILE NAME	BP242XX	
GENERAL TOLERANCE UNLESS OTHERWISE NOTED	APPRO	TITLE.	Pogo pin connector		

ECN(DCN) NO.	D0	2014.07.22	NEW
REV	DATE	DESCRIPTION	