

Note:

Materials:

- .Insulator: Black high temperature plastics U194 V-0
- .Plunger: Brass 0.075um Au over Ni.
- .Spring: SUS 0.025um Au
- .Barrel: Brass 0.075um Au over Ni.

A Mechanical:

- .Contact force: 70g±20g at 1.0mm working stroke
- .Full stroke: 1.40mm
- .Life test: 10,000 cycles

Electrical:

- .Rated current & voltage: DC12V;2A Max.
- .Contact resistance: 50 milliohm Max.

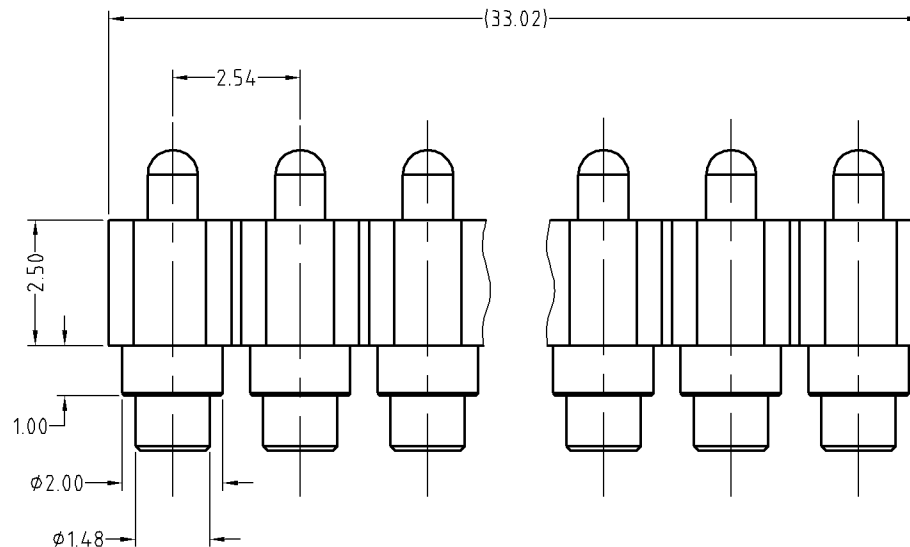
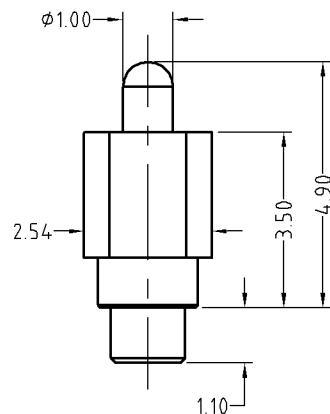
Standard tolerances are:

- .Diameters: +/-0.05mm
- .Lengths: +/-0.15mm
- .Angles: +/-2°

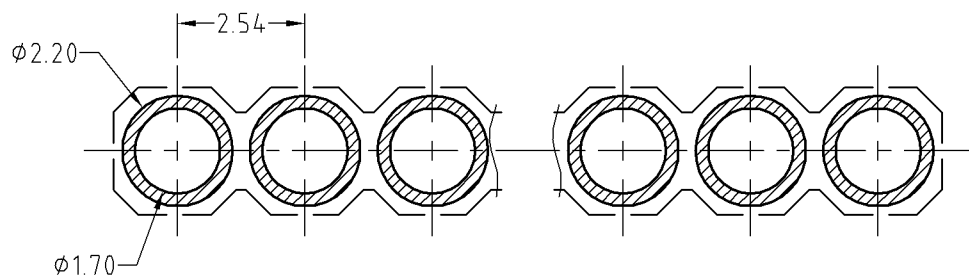
B



Approve Sign



C



Recommended pcb layout
Layout tolerance: ±0.05mm

D

SCALE	10:1	UNIT:mm	THIS DOCUMENT IS THE SOLE PROPERTY OF CFE CORPORATION CO.,LTD., AND SHOULD NOT BE USED IN WHOLE OR IN PART WITHOUT PRIOR WRITTEN PERMISSION.	
ANGEL	±1°	A4	SHEET: 1 of 1	
0~6	±0.05		PART NO.	BP26711-13254 A0A
6~30	±0.10	DRAW	FILE NAME	BP267XX
30~150	±0.15	CHECK	TITLE.	Pogo pin connector
GENERAL TOLERANCE UNLESS OTHERWISE NOTED		APPRO		



ECN(DCN) NO.	D0	2014.10.15	NEW
REV	DATE	DESCRIPTION	