

Note:

Materials:

- .Insulator: Black high temperature plastics U194 V-0
- .Plunger: Brass 0.075um Au over Ni.
- .Spring: SUS 0.025um Au
- .Barrel: Brass 0.075um Au over Ni.

A Mechanical:

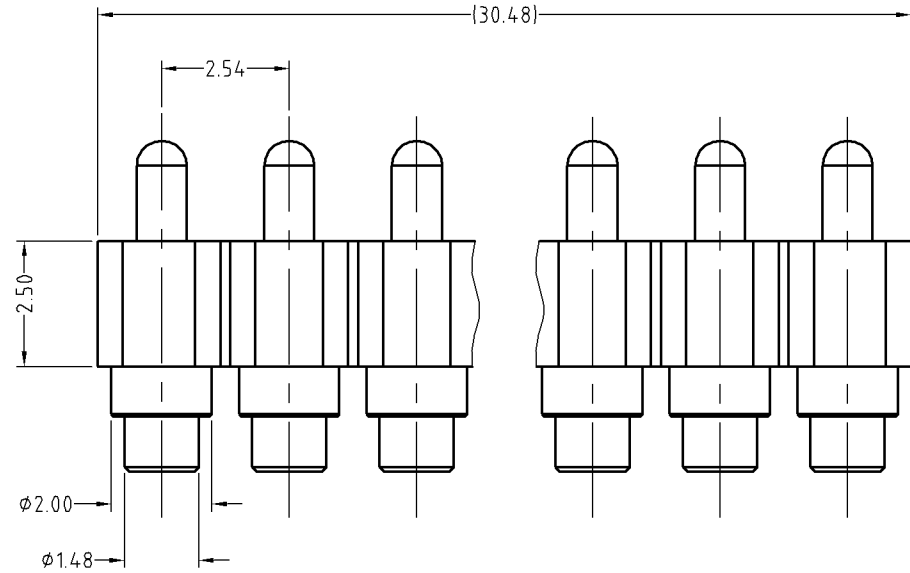
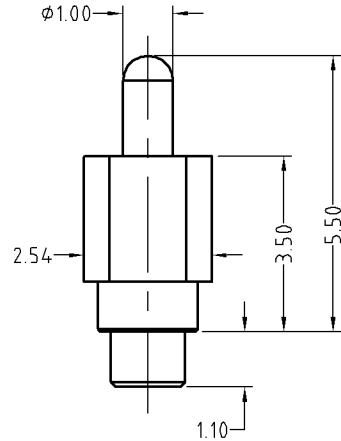
- .Contact force: 70g±20g at 1.0mm working stroke
- .Full stroke: 1.40mm
- .Life test: 10,000 cycles

Electrical:

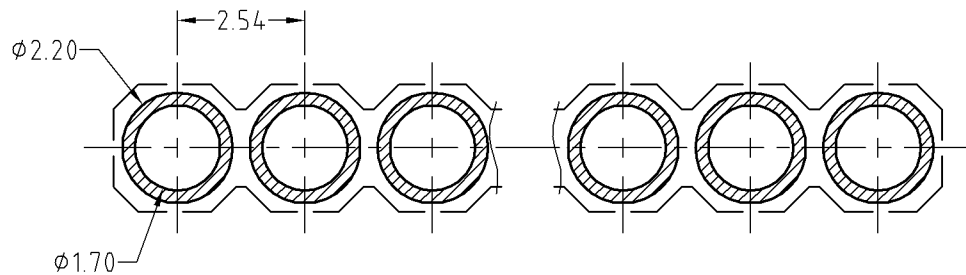
- .Rated current & voltage: DC12V; 2A Max.
- .Contact resistance: 50 milliohm Max.

Standard tolerances are:

- .Diameters: +/-0.05mm
- .Lengths: +/-0.15mm
- .Angles: +/-2°




Approve Sign



Recommended pcb layout
Layout tolerance: ±0.05mm

BOM		
Part	NO.	Qty
Pogo pin	BP26721	12
Housing	H254-12A01	1

SCALE	10:1	UNIT:mm	THIS DOCUMENT IS THE SOLE PROPERTY OF CFE CORPORATION CO.,LTD., AND SHOULD NOT BE USED IN WHOLE OR IN PART WITHOUT PRIOR WRITTEN PERMISSION.	 东莞市川富电子有限公司 CFE CORPORATION CO.,LTD.		
ANGEL	±1°	A4				
0~6	±0.05				SHEET: 1 of 1	
6~30	±0.10	DRAW			PART NO.	BP26721-12254A0A
30~150	±0.15	CHECK			FILE NAME	BP267XX
GENERAL TOLERANCE UNLESS OTHERWISE NOTED		APPRO		TITLE.	Pogo pin connector	

ECN(DCN) NO.	REV	DATE	DESCRIPTION
	D0	2015.06.26	NEW