

1

2

3

4

Note:

Materials:

- .Plunger: Brass 0.5um Au over Ni.
- .Spring: SUS surface treatment
- .Barrel: Brass 0.25um Au over Ni.
- .Bead: insulating bead

A Mechanical:

- .Contact force: 70g±20g at 1.0mm working stroke
- .Full stroke: 1.4mm
- .Life test: 50,000 cycles

Electrical:

- .Rated current & voltage: DC12V; 5A Max.
- .Contact resistance: 50 milliohm Max.

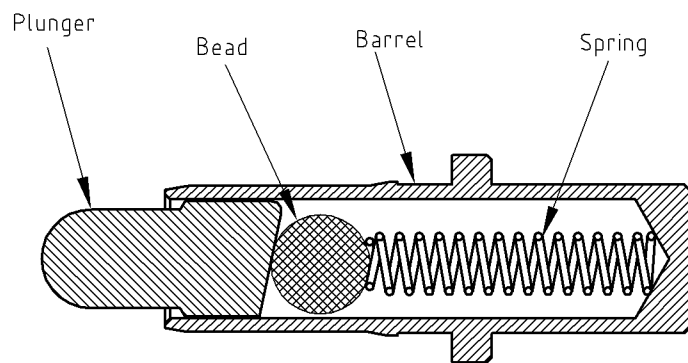


To ensure the best usage, please operate it based on the working height.
Based on the engineering drawings, shall not exceed the maximum allowed compression.

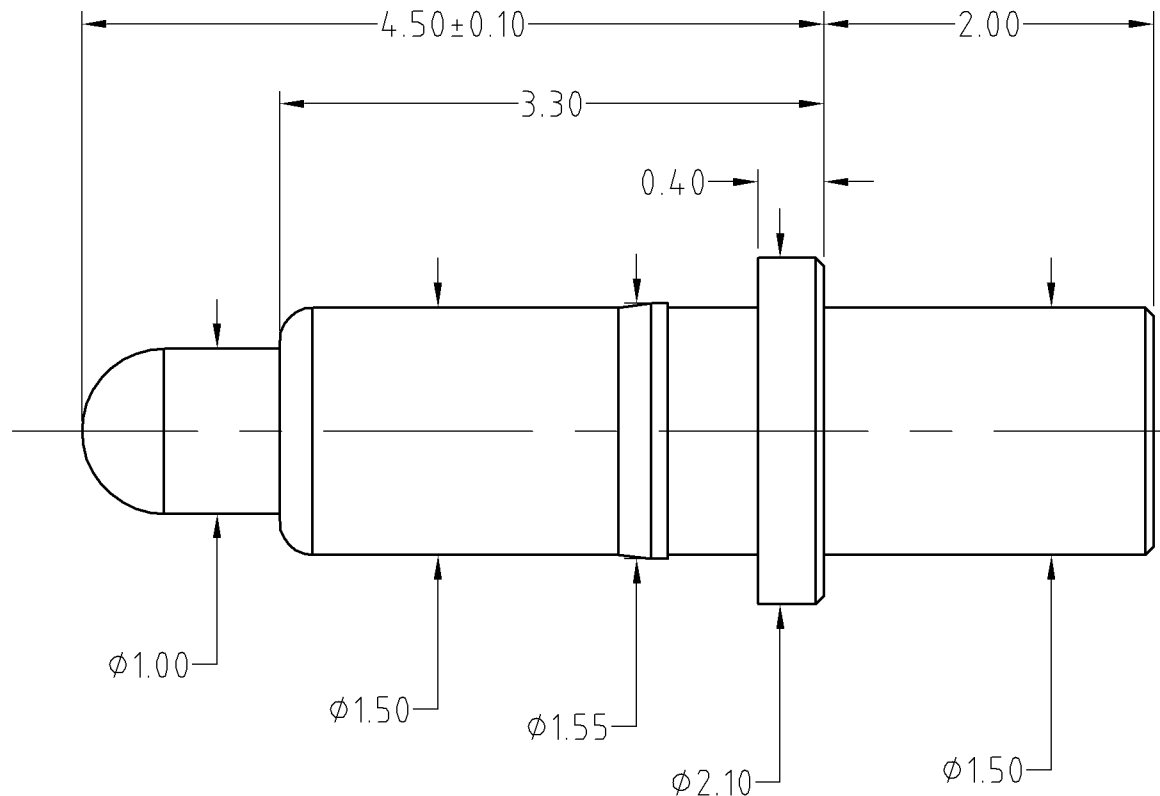
B

BOM		
Part	NO.	Qty
Plunger	M200-P1020	1
Barrel	B271-B1010	1
Spring	M305-S1001	1
Bead	M305-T1000	1

C



D



ECN(DCN) NO.	REV	DATE	DESCRIPTION
	D0	2013.05.30	NEW

SCALE	10:1	UNIT:mm	THIS DOCUMENT IS THE SOLE PROPERTY OF CFE CORPORATION CO.,LTD., AND SHOULD NOT BE USED IN WHOLE OR IN PART WITHOUT PRIOR WRITTEN PERMISSION.	
ANGEL	$\pm 1^\circ$	A4	SHEET: 1 of 1	
0~6	± 0.05		PART NO.	BP27111
6~30	± 0.10	DRAW	FILE NAME	BP151XX
30~150	± 0.15	CHECK	TITLE.	Pogo pin connector
GENERAL TOLERANCE UNLESS OTHERWISE NOTED		APPRO		

CFE 东莞市川富电子有限公司
CFE CORPORATION CO.,LTD.