

1

2

3

4

Note:

Materials: To ensure the best usage, please operate it based on the working height.
Based on the engineering drawings, shall not exceed the maximum allowed compression.

.Plunger: Brass 3 microinch Au over Ni

.Barrel: Brass 100~200 mcroinch Ni

.Spring: SUS 1 microinch Au

Mechanical:

.Contact force: 55g±20% at 1.2mm working stroke

.Max. stroke: 1.4mm

.Life test: 20,000 cycles

Electrical:

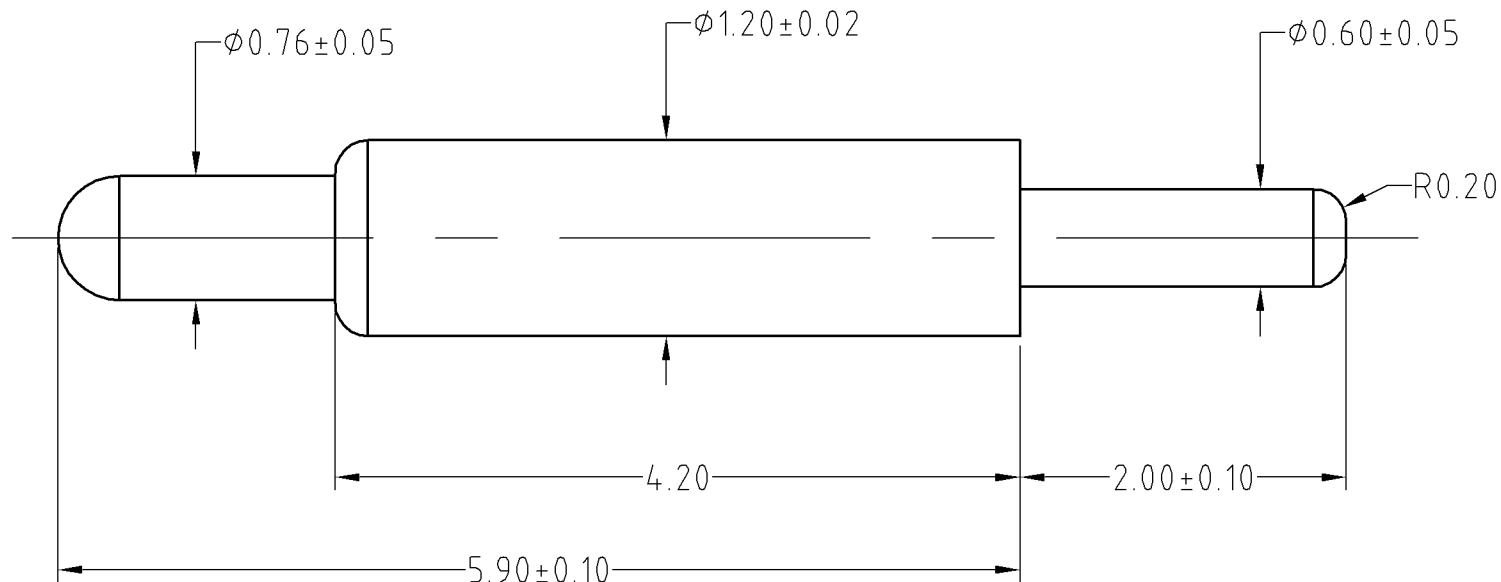
.Rated current & voltage: DC 12V; 1A

.Contact resistance: 50 milliohm Max.

Cannot be used as the charging,



Approve Sign



BOM

Part	NO.	Qty
Plunger	B277-P1003	1
Barrel	B277-B1100	1
Spring	B277-S1001	1

SCALE	10:1	UNIT:mm	THIS DOCUMENT IS THE SOLE PROPERTY OF CFE CORPORATION CO.,LTD., AND SHOULD NOT BE USED IN WHOLE OR IN PART WITHOUT PRIOR WRITTEN PERMISSION.	SHEET: 1 of 1
ANGEL	$\pm 1^\circ$	A4		
0~6	± 0.05			
6~30	± 0.10	DRAW		PART NO. BP27711
30~150	± 0.15	CHECK		FILE NAME BP277XX
GENERAL TOLERANCE UNLESS OTHERWISE NOTED		APPRO		TITLE. Pogo pin connector

CFE 东莞市川富电子有限公司
CFE CORPORATION CO.,LTD.

ECN(DCN) NO.	REV	DATE	DESCRIPTION
	D0	2013.05.30	NEW